



PARADISE ISLAND INSTRUCTIONS

A tropical storm has blown musical symbols all over Paradise Island!

Find and circle the following:

1. Treble clef ✓
2. Bass clef ✓
3. Staff ✓
4. Music alphabet moving forward ✓
5. Brace ✓
6. Barline ✓
7. Double barline ✓
8. Repeat sign ✓
9. Piano Key **B** ✓
10. Piano Key **D** ✓

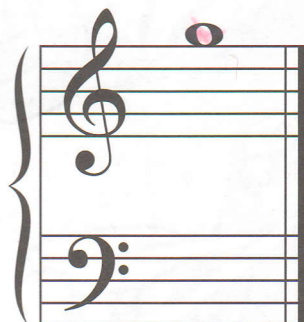
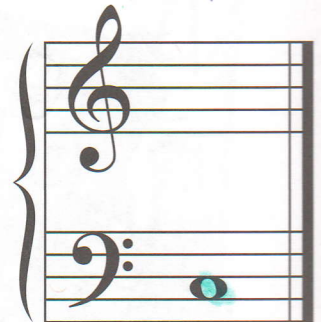
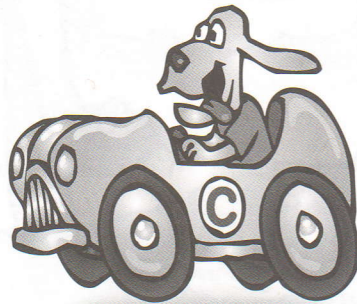
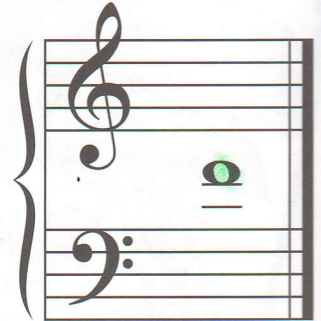
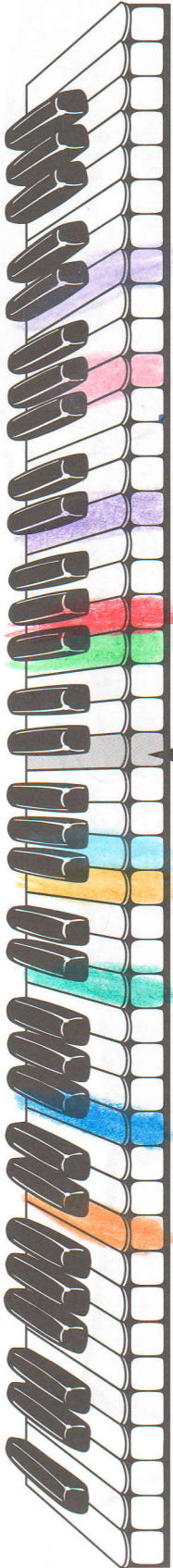
PARADISE ISLAND





GUIDEPOST COLORS

Color each guidepost note on the staff to match its key on the keyboard. Use a different color for each note!





GUESSING GAME



Can you guess what guidepost I'm thinking of?

1. I'm thinking of a guidepost in the middle of the staff that has one ledger line through it.
2. I'm thinking of a guidepost that sits on top of the G clef staff.
3. I'm thinking of a guidepost that sits beneath two ledger lines below the G clef staff.
4. I'm thinking of a guidepost that is a line note between the two dots of the bass clef.
5. I'm thinking of a guidepost that is the second space up on the bass staff.
6. I'm thinking of a guidepost that is so high it needs two extra ledger lines above the treble staff.
7. I'm thinking of a guidepost that is the second space down on the treble staff.
8. I'm thinking of a guidepost that is the same line note where the G clef curls around.
9. I'm thinking of a guidepost that sits beneath the F clef staff.
10. I'm thinking of a guidepost that is so low, it needs two extra ledger lines below the bass clef.
11. I'm thinking of a guidepost that sits on top of two ledger lines above the F clef staff.