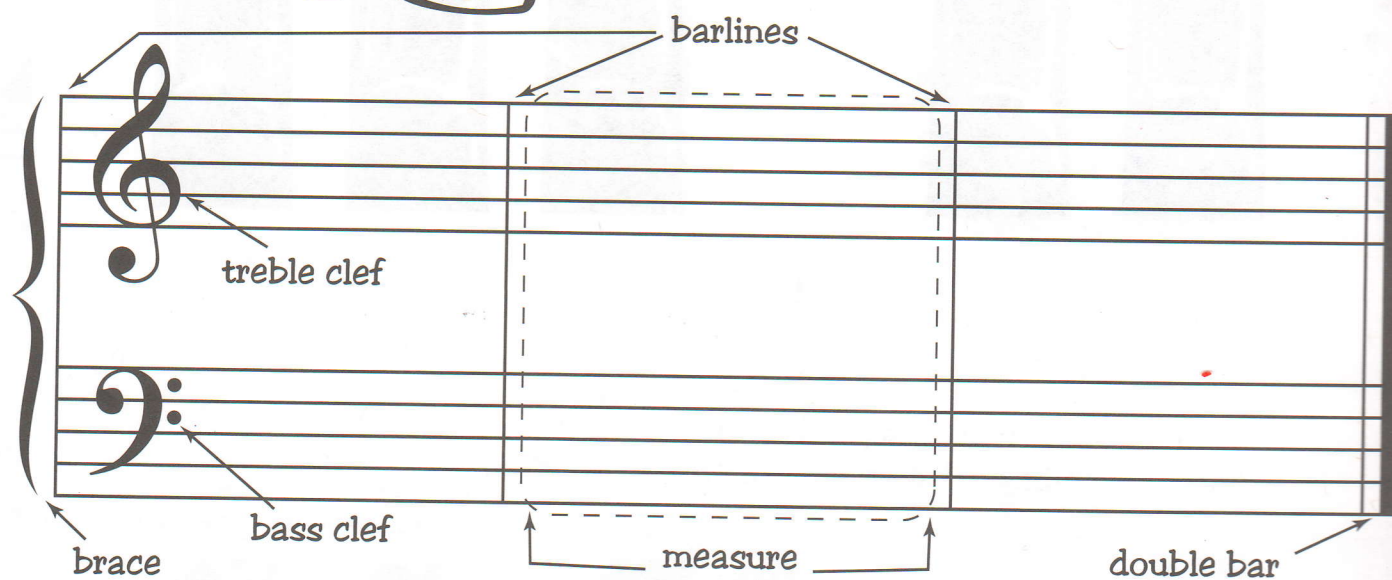




UNIT 3: THE GRAND STAFF

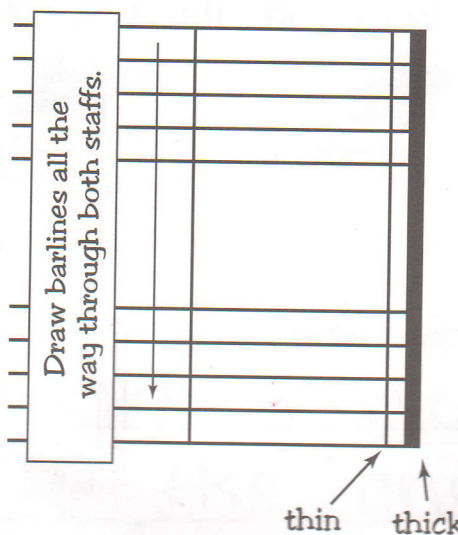


These are the parts
of the **grand staff**.



The **grand staff**
has two staves.

two staves



The second line of the
double bar is thicker
than the first.

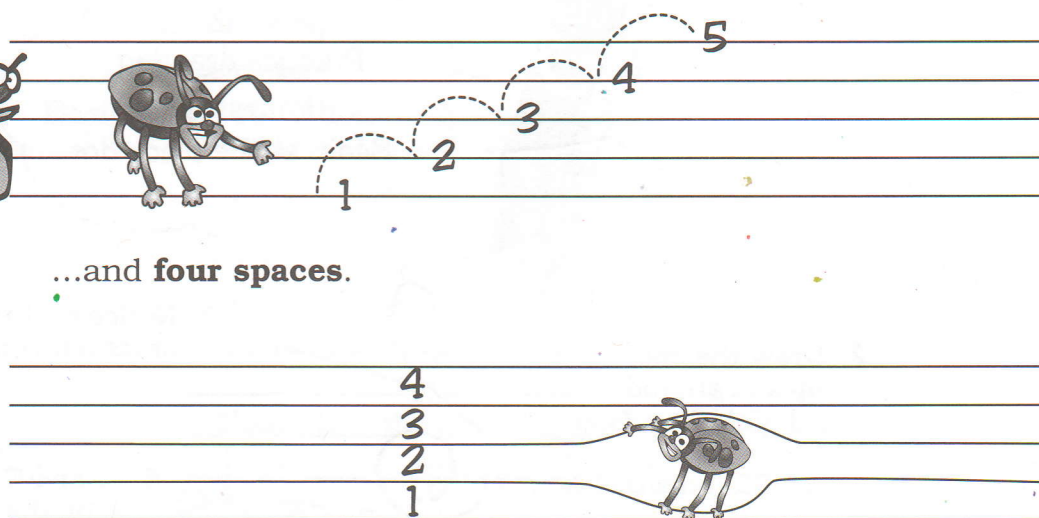


THE GRAND STAFF, CONT.

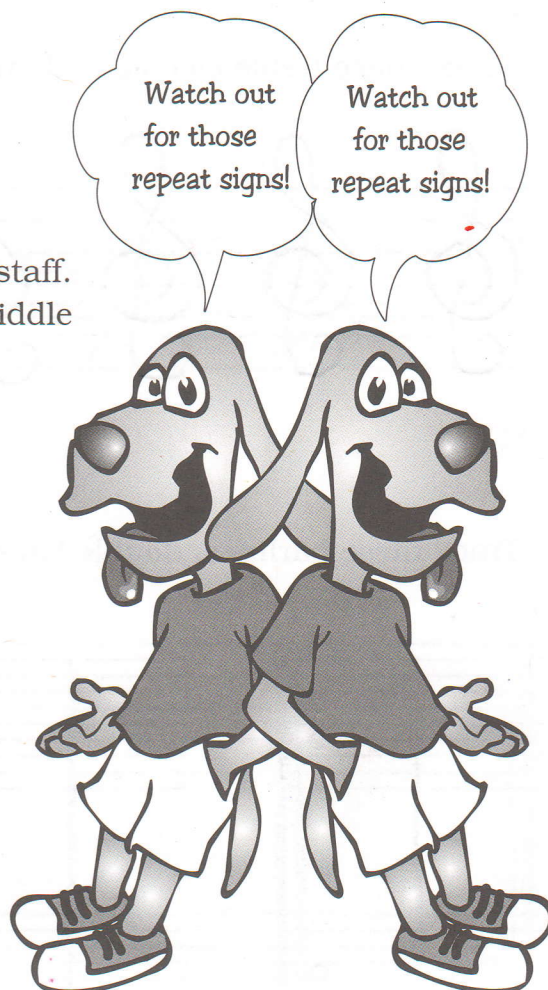
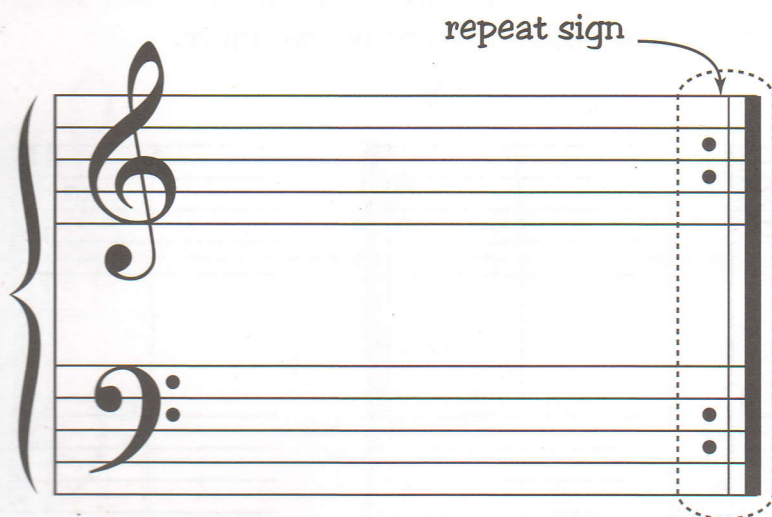
Each staff has **five lines**...



...and **four spaces**.



Sometimes there is a **repeat sign** on the grand staff. A repeat sign is a double bar with dots in the two middle spaces. A repeat sign means, "play it again."

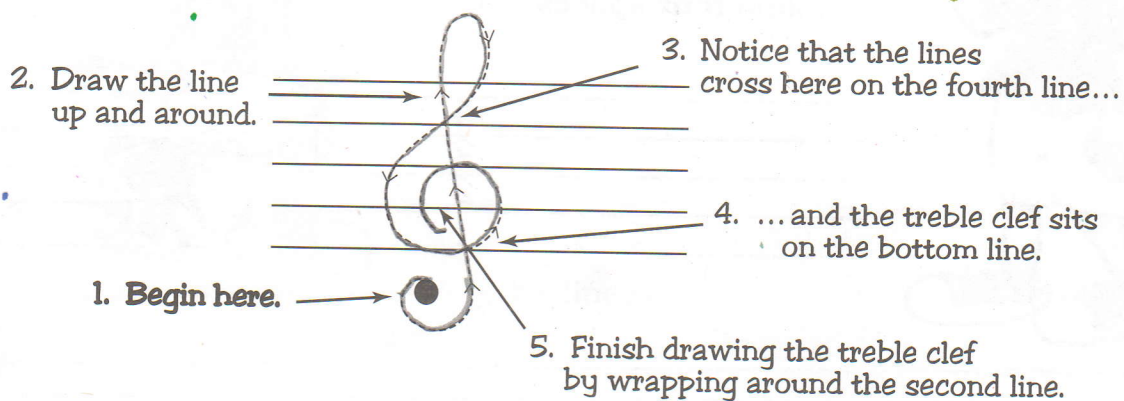




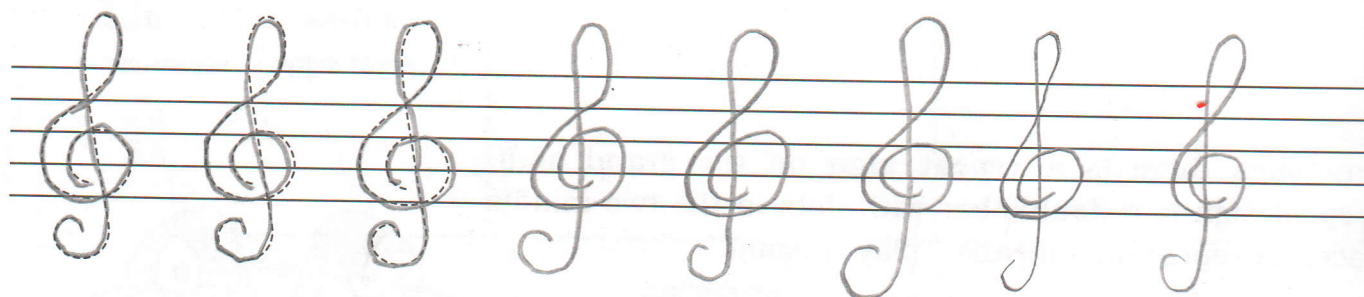
TREBLE CLEF



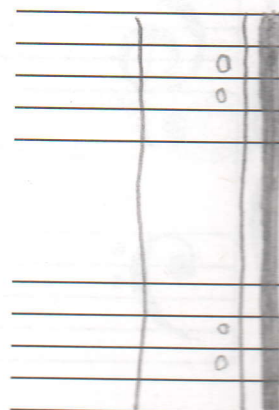
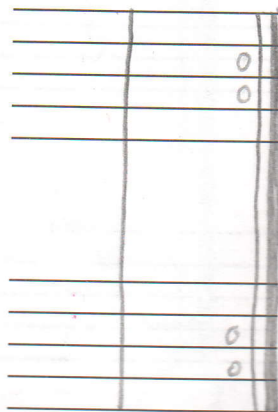
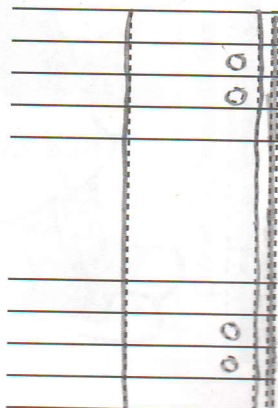
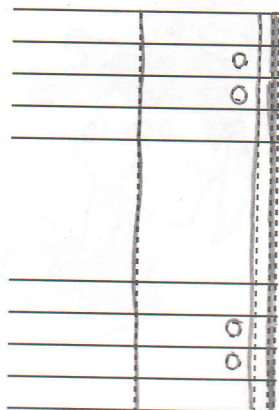
Practice drawing
the **treble clef**.
Begin at the black dot.



1. Trace these treble clef signs then draw five more.

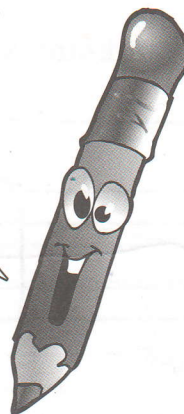


2. Trace these barlines, double bars, and repeat signs, then draw two more.

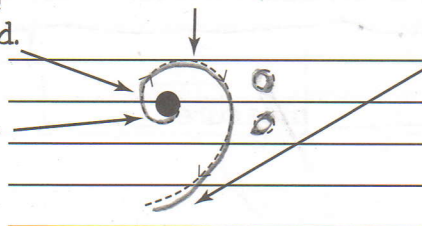


BASS CLEF

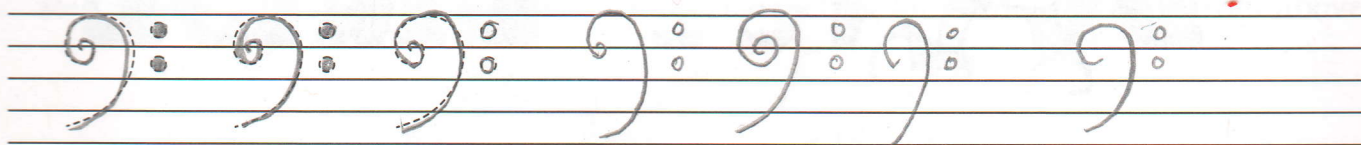
Practice drawing
the **bass clef**.
Begin at the black dot.



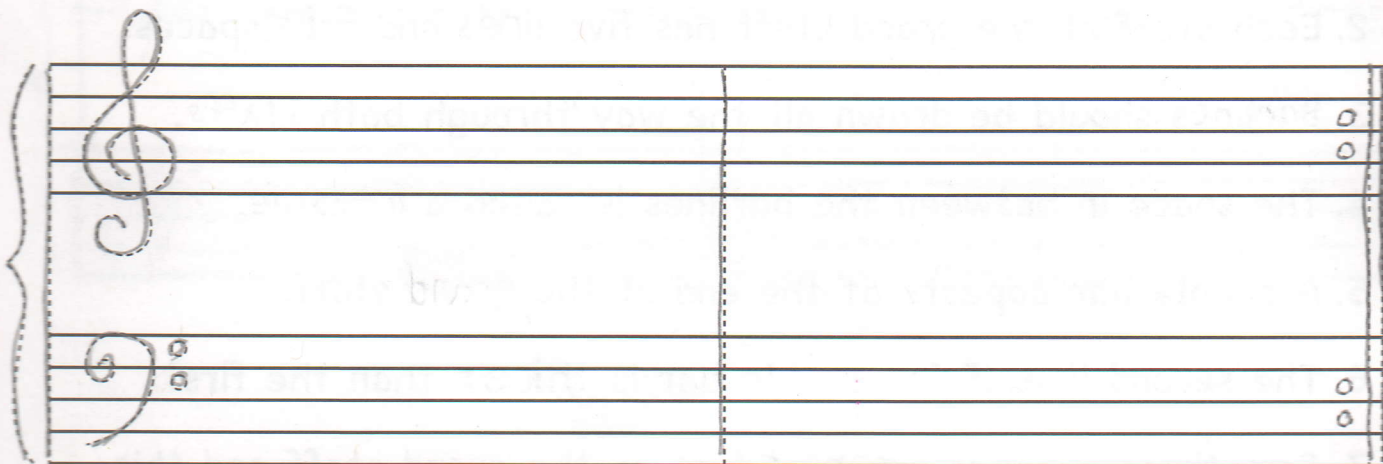
2. Draw the line
• up and around.
3. Notice that the bass clef touches the top line.
4. End in the bottom space.
5. Place the dots
on either side
of this line.
1. Begin here.



1. Trace these bass clef signs then draw five more.



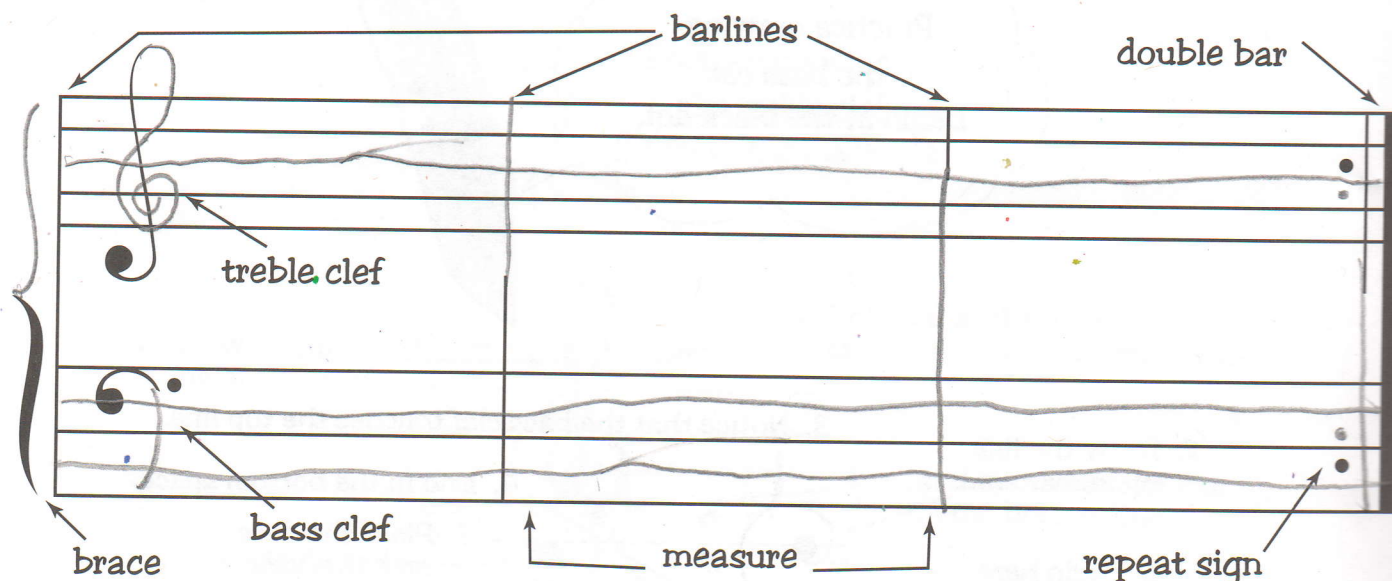
2. Trace the parts of the grand staff.





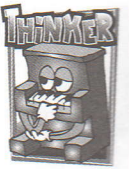
GRAND STAFF GONE MISSING

A. Some parts of this grand staff were accidentally erased. Draw the missing parts.



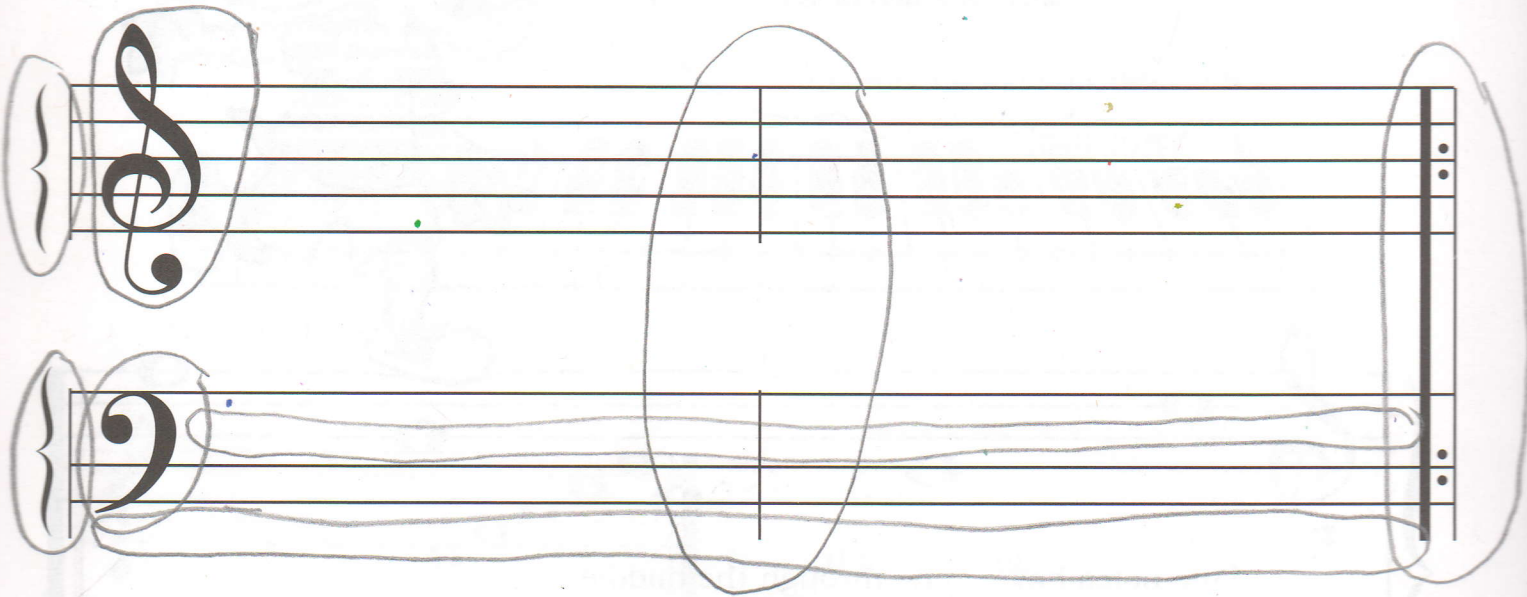
B. Part of Digby's assignment was accidentally erased! Fill in the missing words and letters.

1. The grand staff has two stoffs.
2. Each staff of the grand staff has five lines and f-ive spaces.
3. Barlines should be drawn all the way through both stoffs.
4. The space in between the barlines is called a measure.
5. A double bar appears at the end of the grand staff.
6. The second line of the double bar is thicer than the first.
7. Sometimes there is a repeat sign on the grand staff and this means, "play it agian."



GRAND STAFF GONE WACKY

- A. There are several things wrong with this grand staff! Find and circle the mistakes.



- B. Redraw the grand staff in the space below, correcting all of the mistakes from above.

