

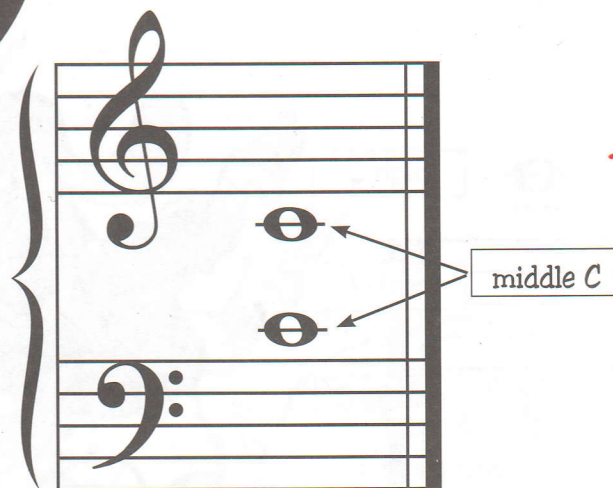


UNIT 6: GUIDEPOSTS - THE FIVE C'S

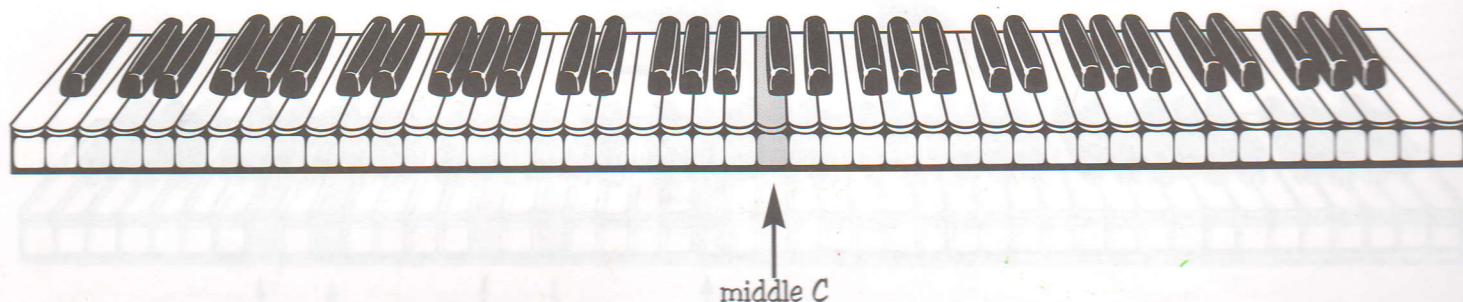
There is a note in the middle of the grand staff. It has one extra line through it. This line is called a **ledger line**. The name of this note is **middle C**.



Middle C for the right hand is placed close to the treble staff. Middle C for the left hand is placed close to the bass staff.



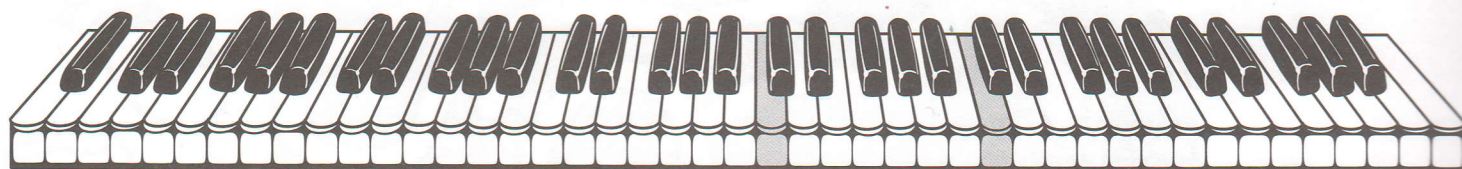
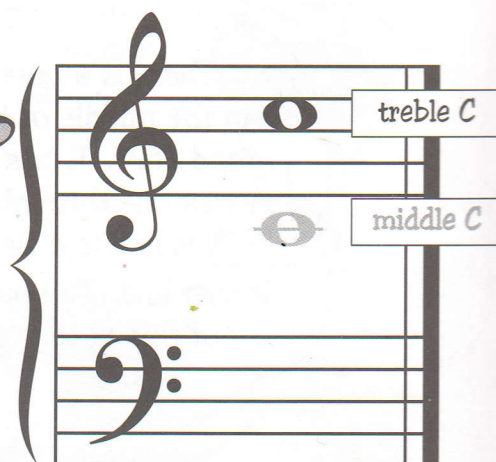
Middle C is in the *middle* of the keyboard.





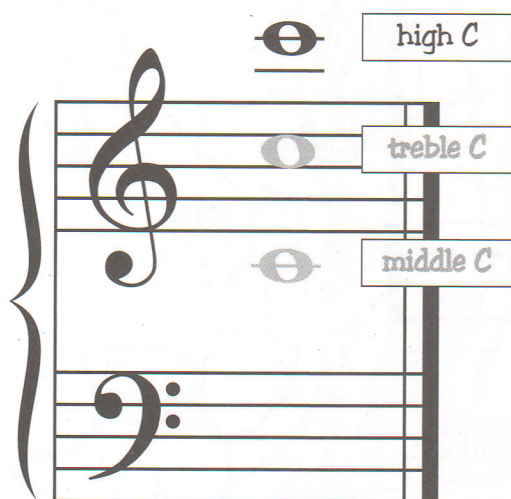
GUIDEPOSTS - THE FIVE C'S, CONT.

The C above middle C is treble C. It is the second space down in the treble clef.

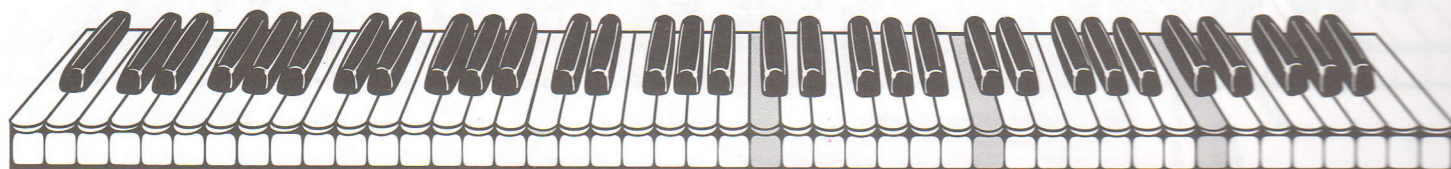


middle C

treble C



The C above treble C is high C. It is so high it needs two extra ledger lines above the treble clef.

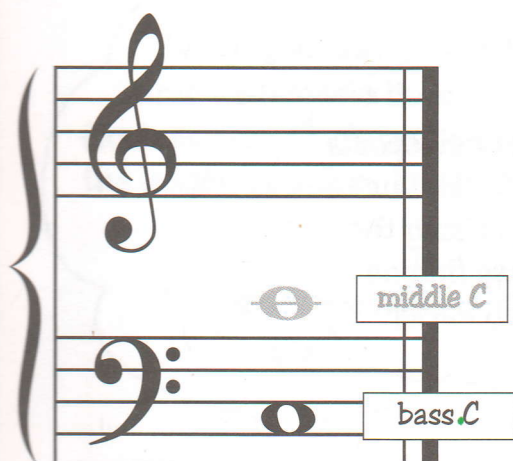


middle C

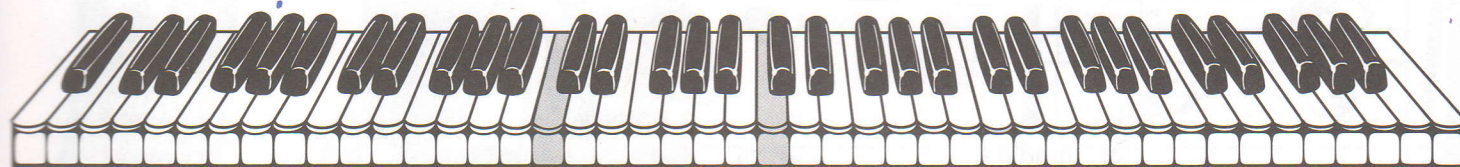
treble C

high C

GUIDEPOSTS - THE FIVE C'S, CONT.

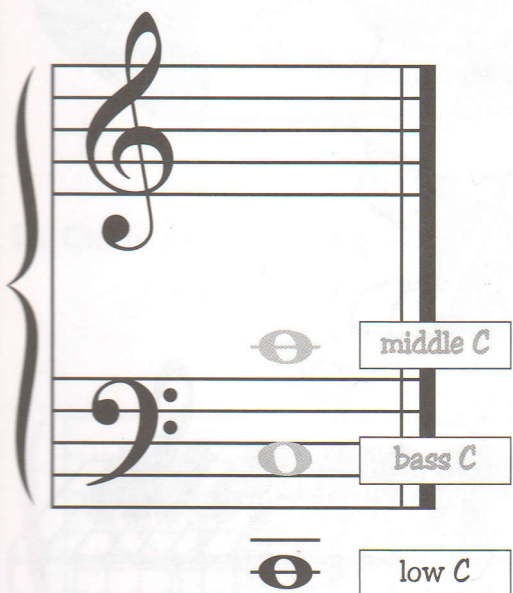


The C below middle C is bass C. It is the second space up in the bass clef.

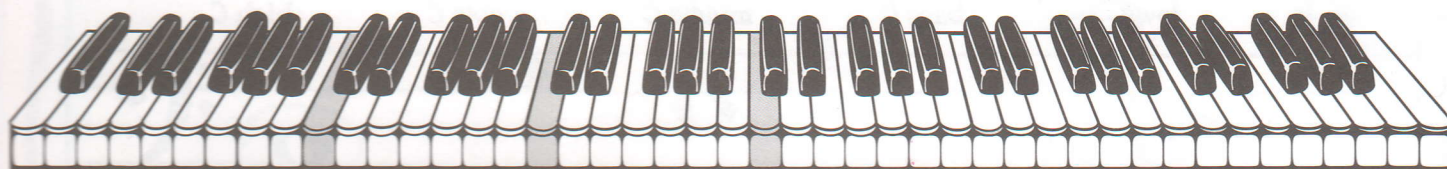


bass C

middle C



The C below bass C is low C. It is so low it needs two extra ledger lines below the bass clef.



low C

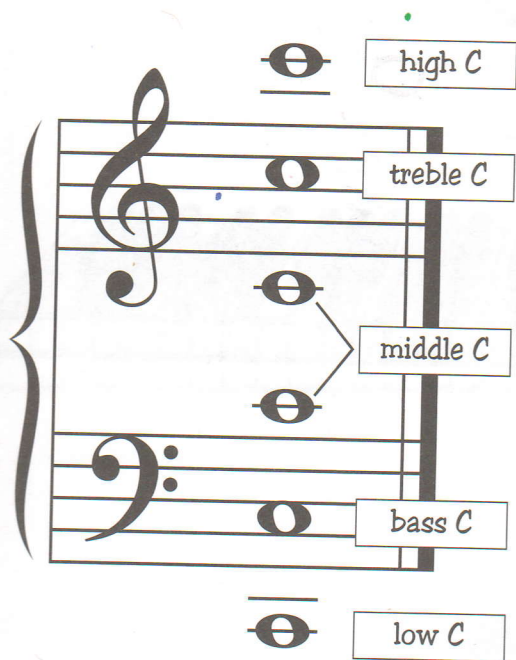
bass C

middle C

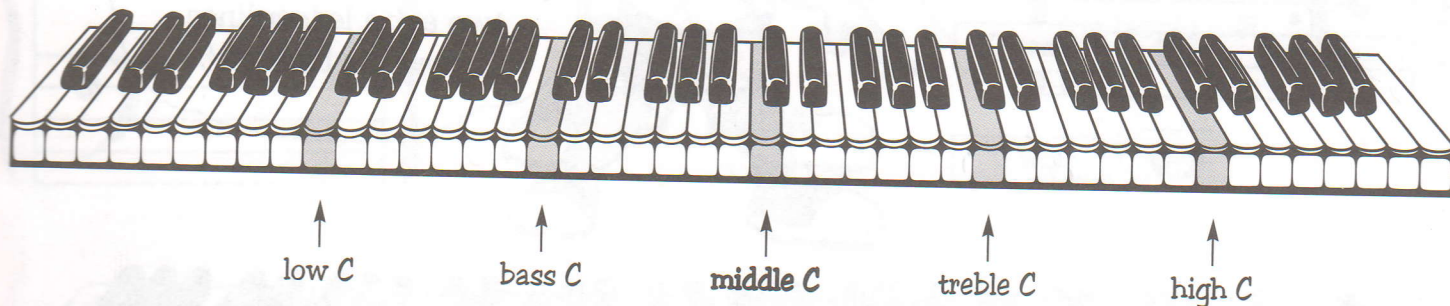


GUIDEPOSTS - THE FIVE C'S, CONT.

We call these notes **guideposts** because they can "guide" us to other notes. Memorizing the guideposts makes finding other notes much easier.



Here are the guidepost **C's** on the keyboard.



CAN YOU C?

When you draw a note with **ledger lines** (such as high C), always draw the ledger lines first, like this:



Then, draw the note:



1. Draw the guidepost C's next to their names on the staff below.

2. Circle all the guidepost C's on the staff below.

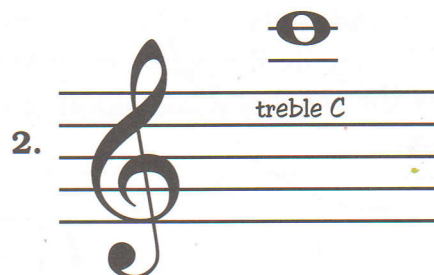


NOTE HAPPY

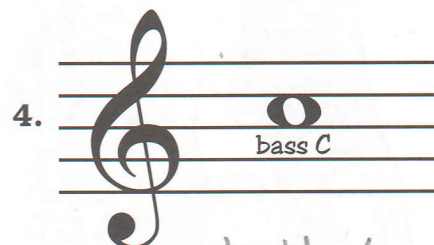
If the note is named correctly, draw a smiling face. If the note is named incorrectly, draw a frowning face and write its correct name on the line.



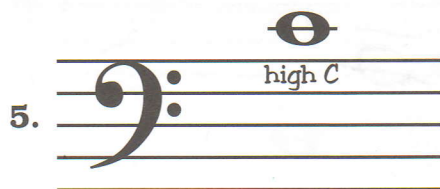
bass C



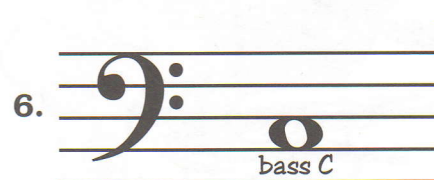
high C



treble C



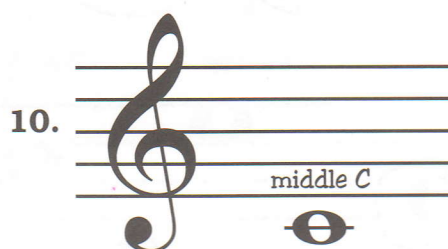
Middle C



Middle C



bass C

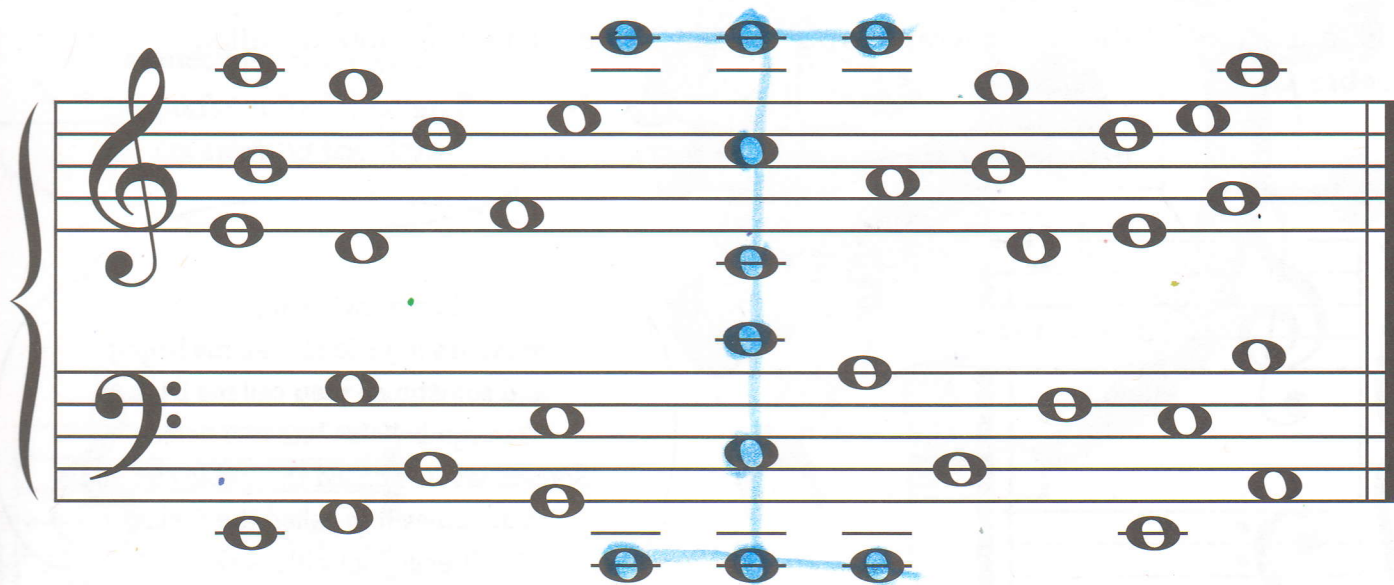


DON'T YOU LOVE IT?

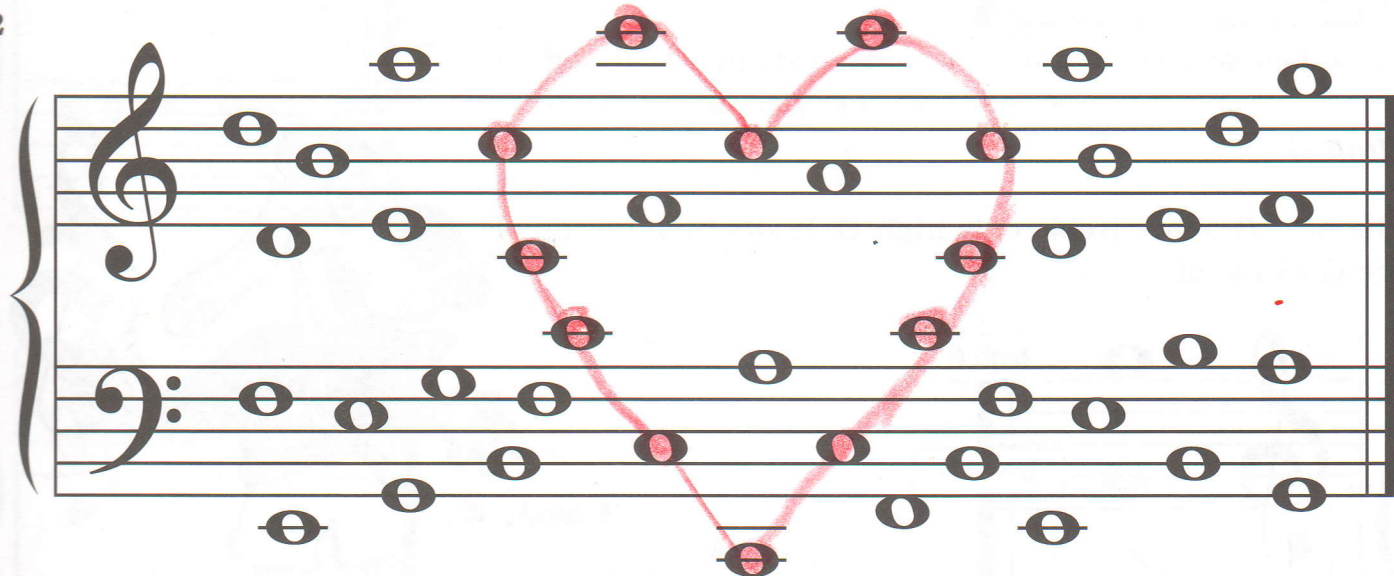


Color *only* the guidepost **C**'s to reveal a secret message. Use blue for the guidepost **C**'s on grand staff #1 and #3. Use red for the guideposts on grand staff #2.

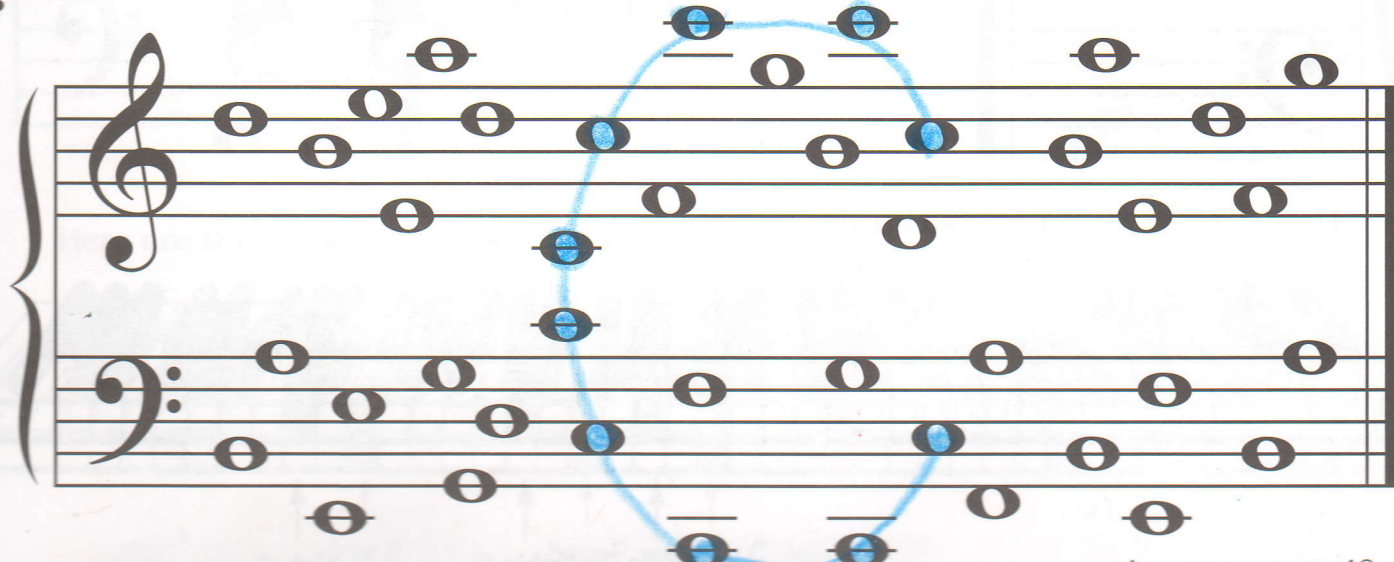
#1



#2



#3



Answer on page 46.