



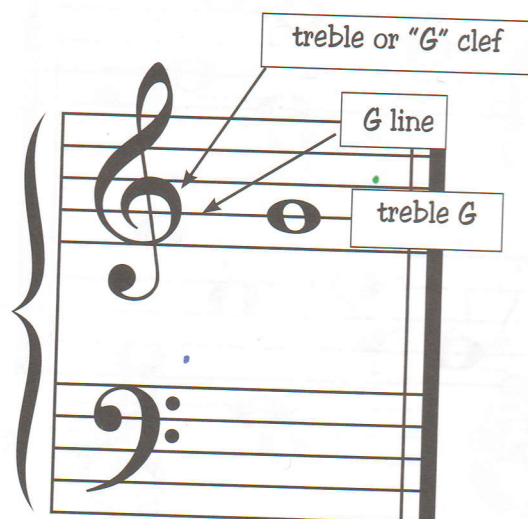
UNIT 7: GUIDEPOSTS - G'S AND F'S

Answer to
page 45



Treble G

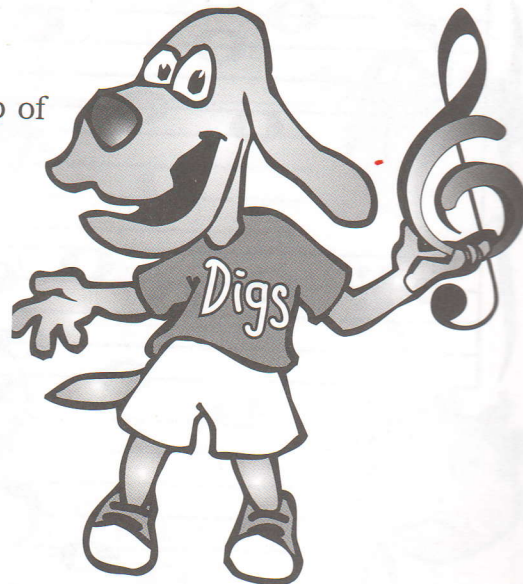
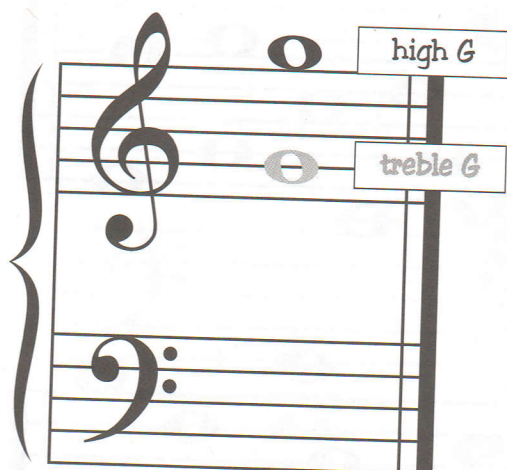
The curly part of the G clef wraps around the "G line." This line note is called **treble G**.



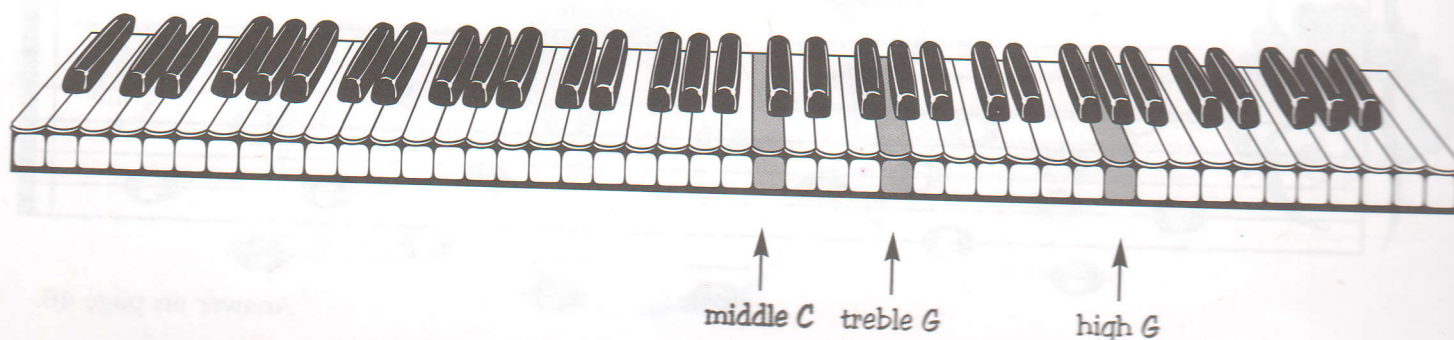
I have two names.
Sometimes my friends call me Digby
and sometimes they call me Digs.
This symbol also has two names.
Sometimes it is called the treble clef and
sometimes it is called the G clef.
It even looks like a G!

High G

The next **G** above treble G is **high G**. It sits high on top of the G clef staff.



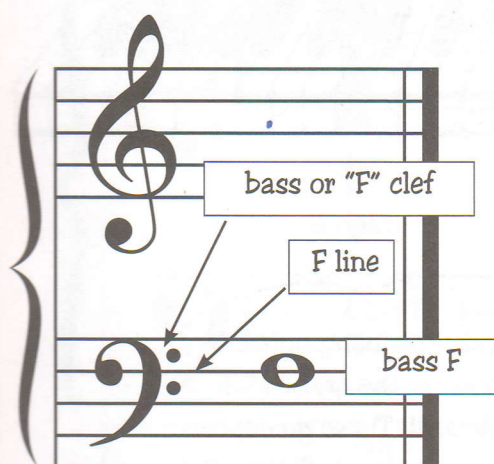
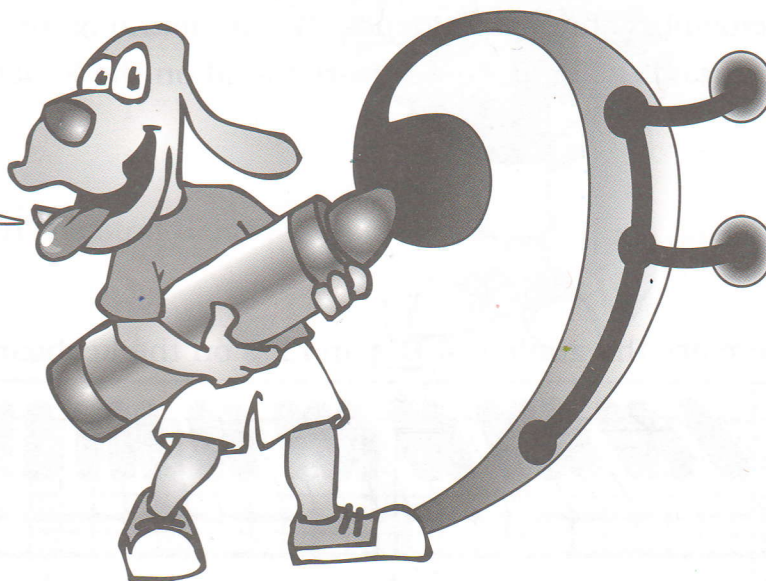
Here are the guidepost **G**'s on the keyboard.





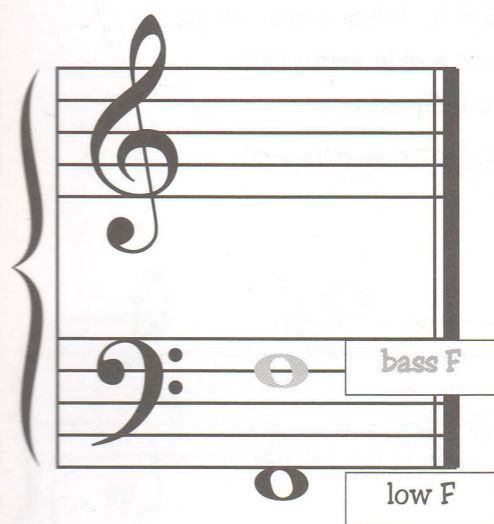
GUIDEPOSTS G'S AND F'S, CONT.

This sign is sometimes called the bass clef and sometimes the F clef. I can make it look like an **F** by connecting the dots.



Bass F

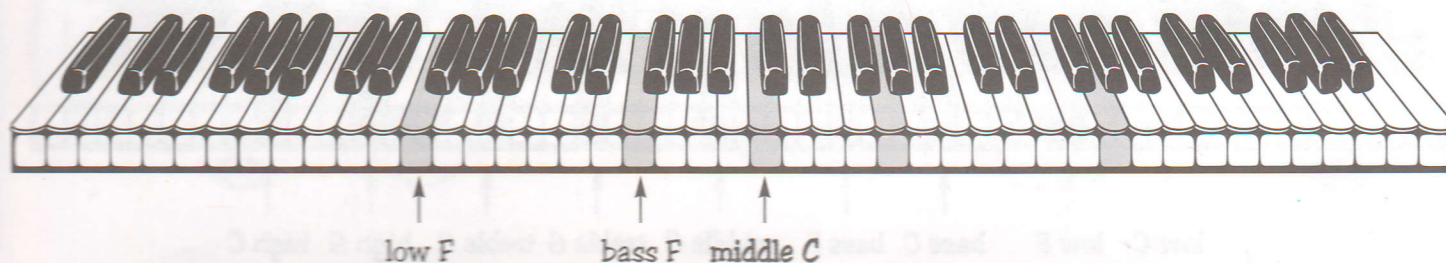
The line that runs between the two dots of the F clef is the F line. This line note is called **bass F**.



Low F

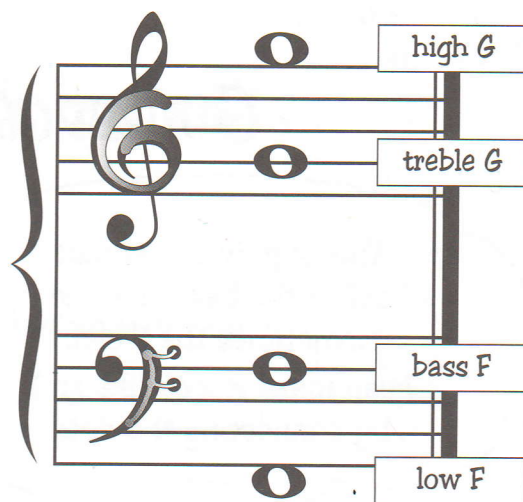
The F below bass F is **low F**. It sits down low beneath the F clef staff.

Here are the guidepost **F**'s on the keyboard.

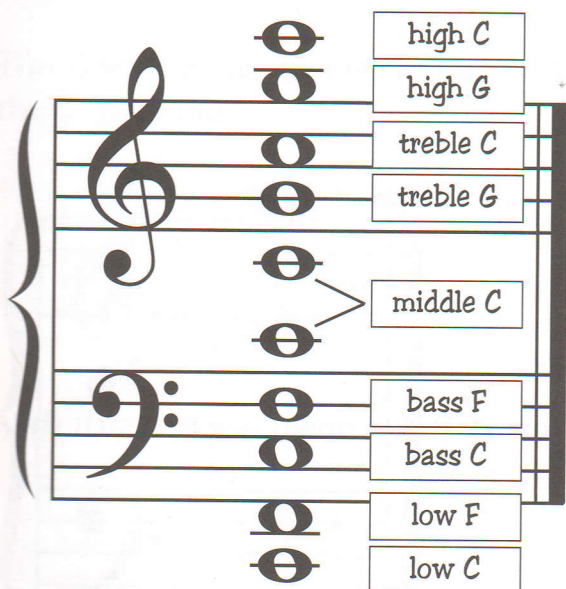
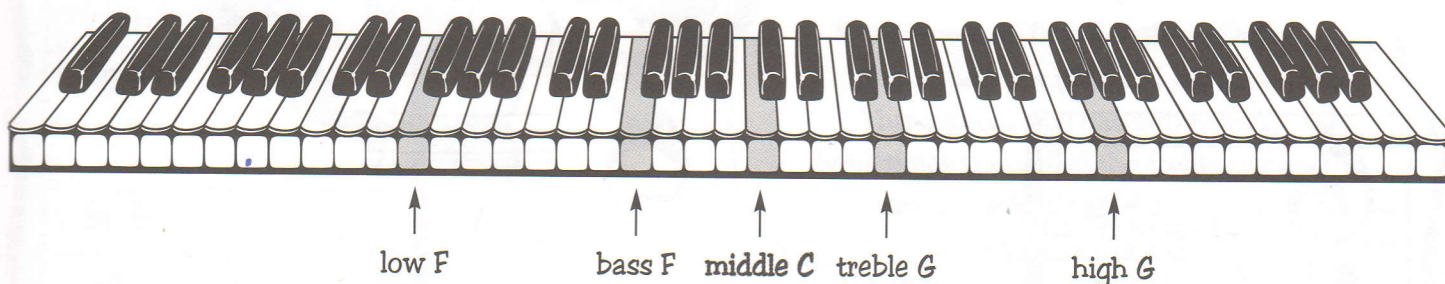




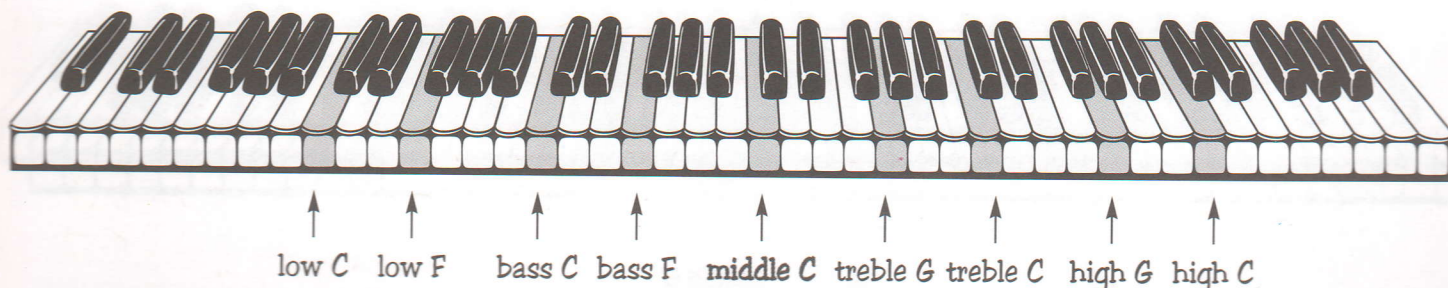
Remember that the guidepost **G**'s are found on the G clef staff and the guidepost **F**'s are found on the F clef staff.



Here are the guidepost **G**'s and **F**'s on the keyboard.



Look at how many notes you know on the grand staff and the keyboard! These guidepost notes will help you learn all the other notes on the grand staff much more quickly! All other notes are just a step or a skip away from a guidepost note.





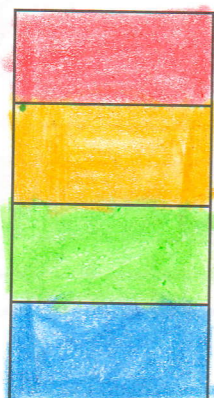
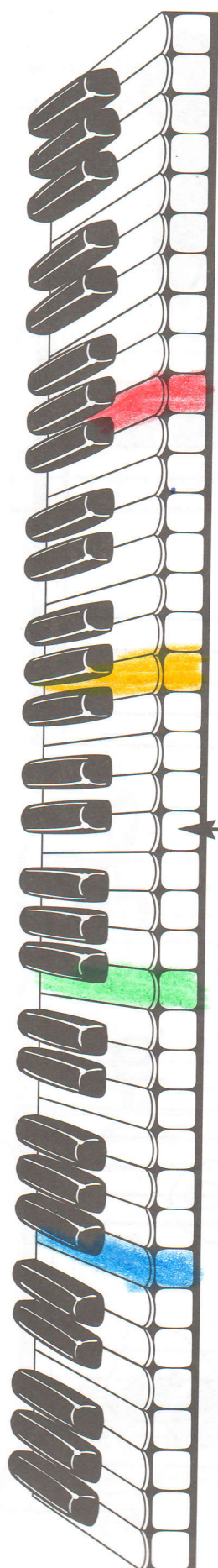
-
- high G .
- treble G
- bass F
- low F

-



COLOR CODED

1. Create your own color key by coloring each box a different color.

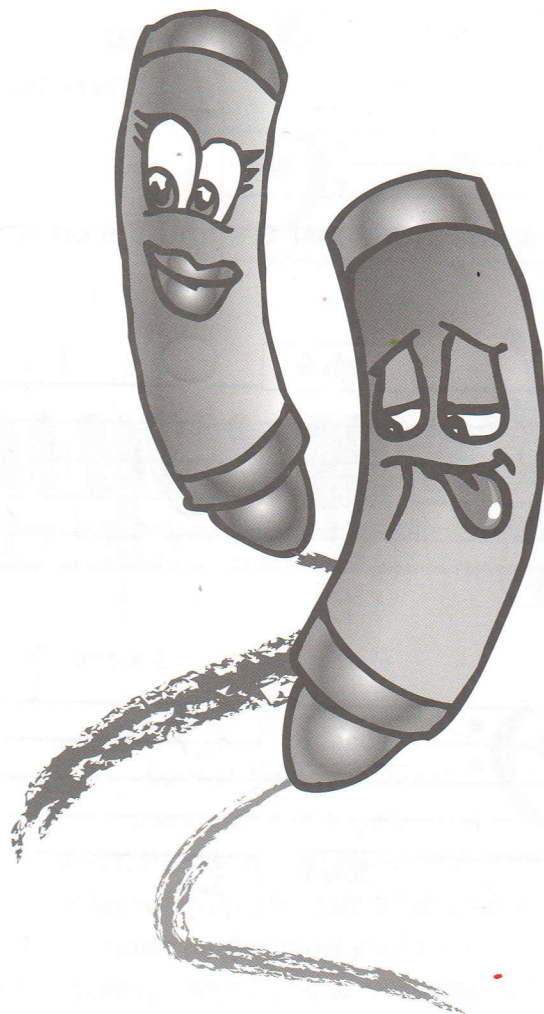


high G

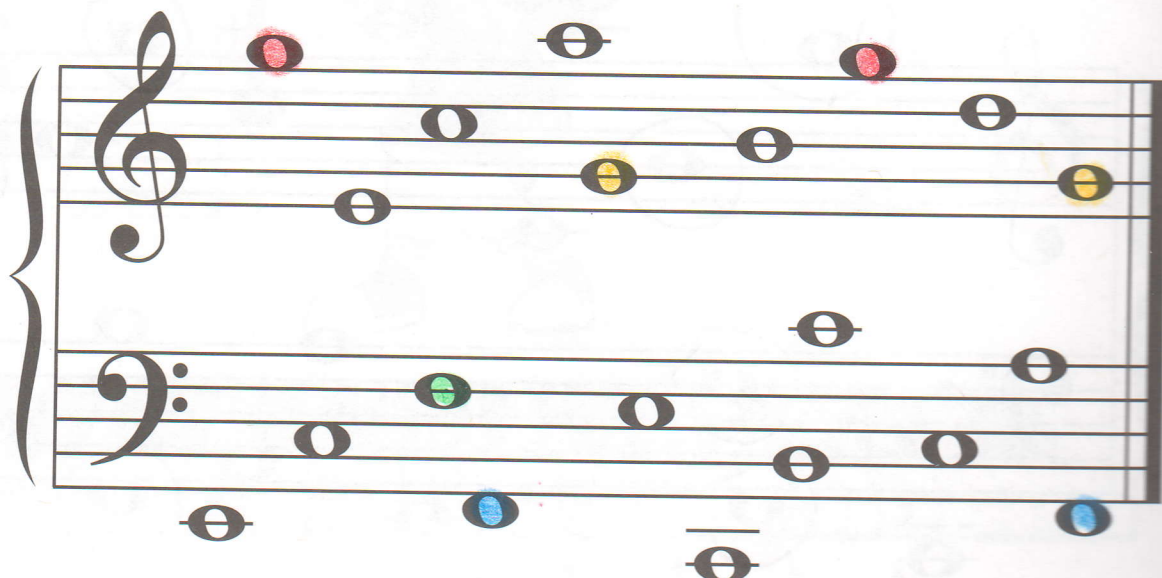
treble G

bass F

low F



2. Using your color key, color all the guidepost **G**'s and **F**'s on the grand staff and all the guidepost **G**'s and **F**'s on the keyboard.



PLANET KEYBOARD

Help these spacemen find their homes on "Planet Keyboard" by drawing a line connecting each spaceship to its home key.





C, G, AND F GUIDEPOSTS

1. Color only the guidepost **C**'s, **G**'s and **F**'s in the staves below.
2. Using one curving line, connect all of the colored notes to reveal a secret picture.

CAUGHT IN THE ACT



This man stole the guideposts from the keyboard and the grand staff! Replace the guidepost notes by drawing them on the staff. Replace the guidepost keys by drawing and labeling them on the keyboard. Make them disappear from the robber's bag by crossing them out as you go.

