

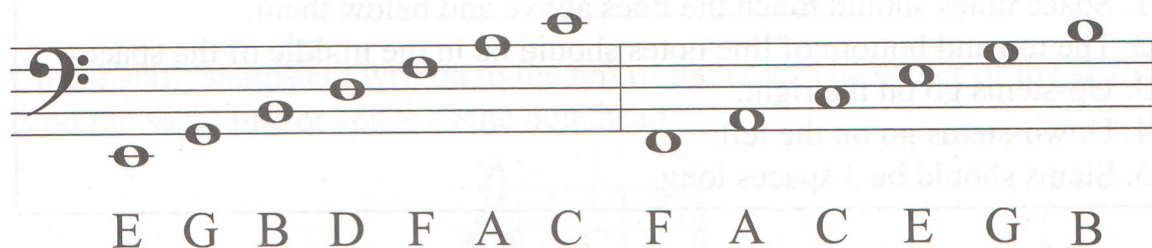
LESSON 1

LETTER NAMES OF NOTES

These are the letter names of the notes in the treble clef.



These are the letter names of the notes in the bass clef.



These are the names of some leger line notes (also spelled ledger line).

| | | | | | | | | | | | |
|---|---|---|---|---|---|---|---|---|---|---|---|
| | | | | | | | | | | | |
| C | B | A | C | D | E | A | B | C | E | D | C |

If errors are found in this book, please email info@bktmusic.com. Corrections are posted at www.bktmusic.com.

1. Write the names of these notes.

Handwritten note names are written below the staff lines:

Treble clef: D, F, A, C, G, D, G, B

Bass clef: E, E, B, B, G, G, D, D, F

2. Draw these notes.

1. Space notes should touch the lines above and below them.
2. The top and bottom of line notes should be in the middle of the spaces.
3. Up-stems go on the right.
4. Down-stems go on the left.
5. Stems should be 3 spaces long.

Handwritten note names are written below the staff lines:

Treble clef: G, D, F, E, B, A, G, F, C

Bass clef: F, C, G, A, E, B, D, F, C

3. Draw these notes using **leger lines**.

Handwritten note names are written below the staff lines:

Above staff: C, A, B

Below staff: A, C, B

Above staff: E, C, D

Below staff: C, E, D