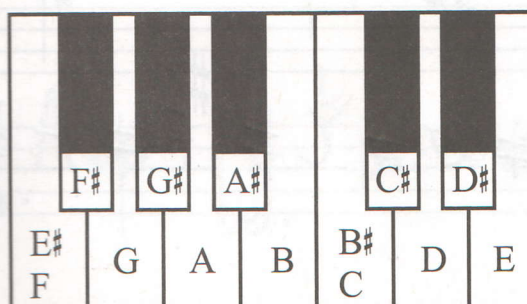


## LESSON 2

### SHARPS, FLATS, AND NATURALS

**ACCIDENTALS** are sharps, flats, or naturals that are written before notes to make them different from what the key signature says. (For more about key signatures see Lesson 5.)

A **SHARP** (#) raises a note a half-step. When you see a sharp in piano music, play the key to the right of the white key with the same letter name.



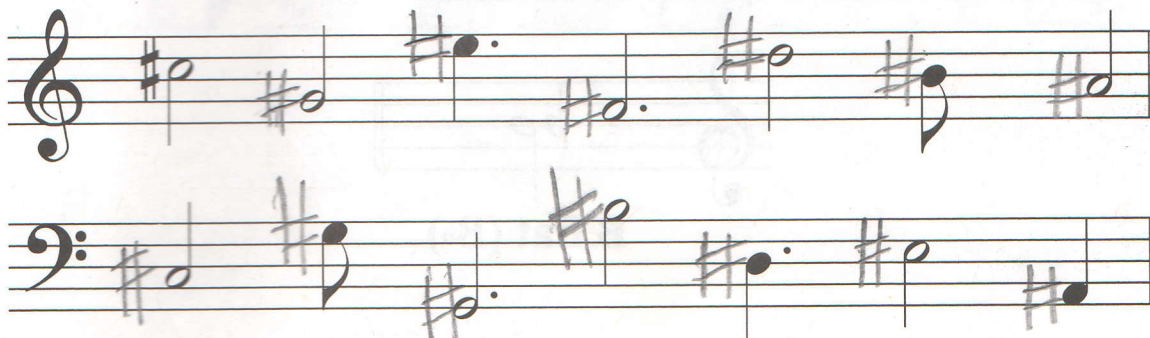
On the staff, sharps are written to the left of the note. The center of the sharp is on the same line or space as the note head.



**F sharp (F#)**

1. Draw sharps to the left of each of these notes. The first one is given.

- Draw the center of each sharp on the same line or space as the note head.
- Vertical lines should be three spaces tall.
- Horizontal lines should be on an angle.

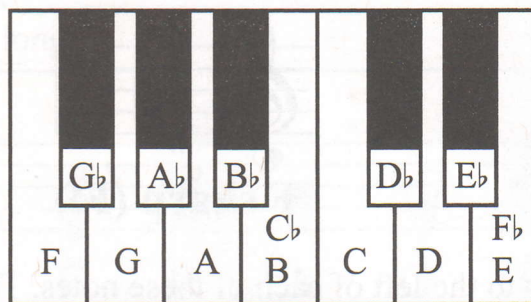


2. Name these notes. The first one is given.

The first staff (treble clef) contains the following notes and handwritten names: A# (given), C#, G#, F#, D#, G#, F#, B#.

The second staff (bass clef) contains the following notes and handwritten names: F#, C#, G#, C#, F#, A#, B#, E#.

A **FLAT** (b) lowers a note. When you see a flat in piano music, play the key to the left of the white key with the same letter name.



On the staff, a flat is written to the left of the note, and the round part of the flat is on the same line or space as the note head.

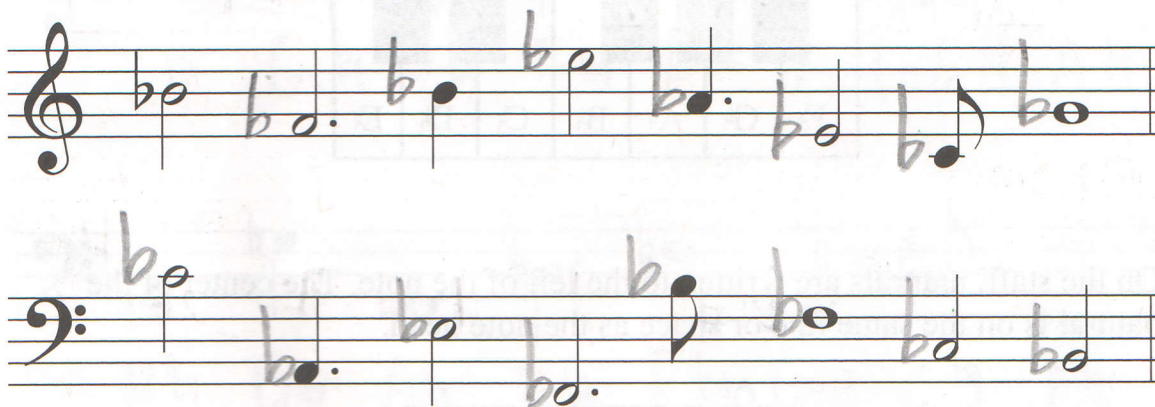
A musical staff in treble clef showing a B flat note. The note is on the second line, and the flat symbol (b) is to the left of the note head, with its round part on the second line.

**B flat (B $\flat$ )**

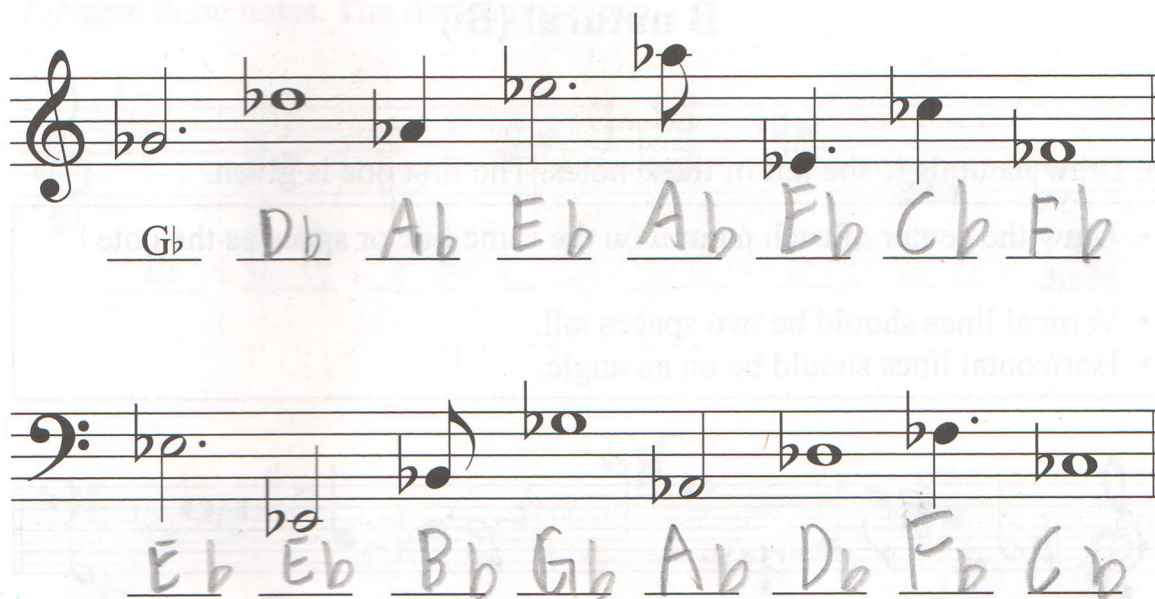


3. Draw flats to the left of each of these notes. The first one is given.

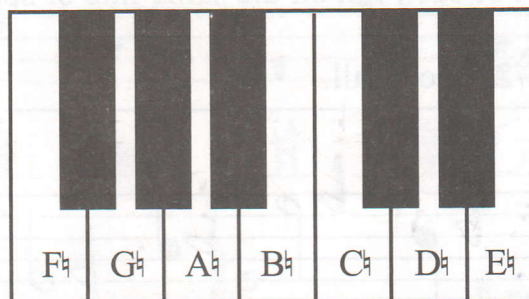
- Draw the round part of each flat on the same line or space as the note head.
- Lines should be 2 1/2 spaces tall.



4. Name these notes. The first one is given.



A **NATURAL** (♮) cancels a previous sharp or flat. Naturals are white keys.



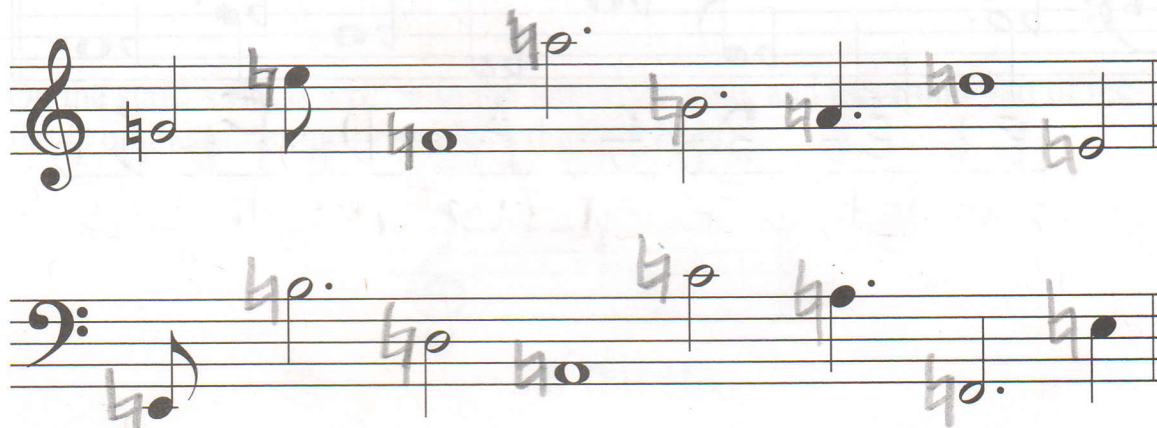
On the staff, naturals are written to the left of the note. The center of the natural is on the same line or space as the note head.



**B natural (B♮)**

5. Draw naturals to the left of these notes. The first one is given.

- Draw the center of each natural on the same line or space as the note head.
- Vertical lines should be two spaces tall.
- Horizontal lines should be on an angle.



6. Name these notes. The first one is given.

E $\flat$  G $\flat$  B $\flat$  F $\flat$  D $\sharp$  A $\flat$  E $\flat$  A $\flat$

B $\flat$  G $\flat$  A $\flat$  D $\sharp$  F $\flat$  G $\flat$  C $\sharp$  F $\flat$

7. Name these notes. The first one is given.

E $\flat$  A $\sharp$  F $\flat$  C $\sharp$  G $\flat$  D $\sharp$  E $\flat$  D $\flat$

B $\flat$  F $\sharp$  C $\sharp$  E $\flat$  G $\flat$  A $\sharp$  D $\sharp$  F $\sharp$



8. Draw these notes.

Top staff notes (Treble Clef): F#, C#, Bb, Eb, C#, Db, A#, Eb

Bottom staff notes (Bass Clef): D#, Eb, F#, Ab, G#, Bb, Gb, F#

9. Mark the word that means sharps, flats and naturals that are drawn before the notes.

☐ Articles

☒ Accidentals

☐ Alligators