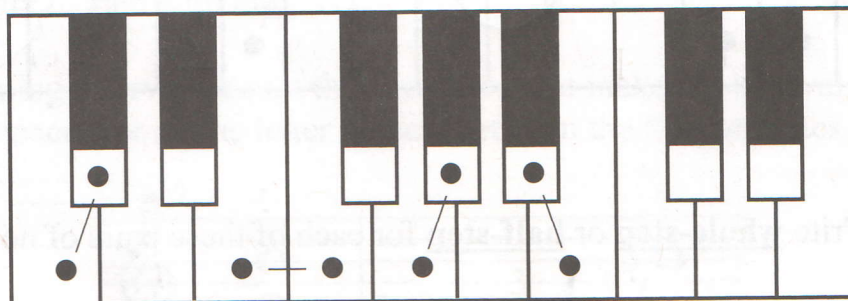


LESSON 3

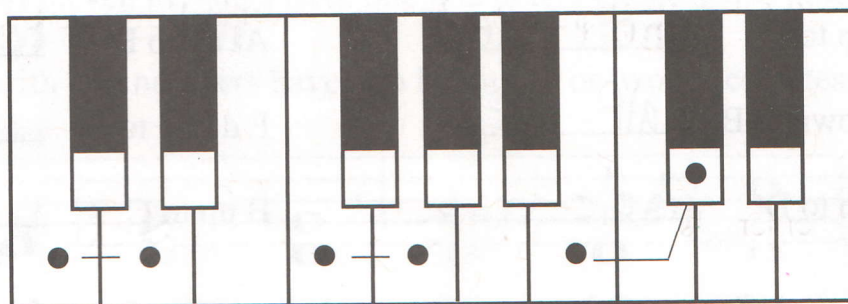
HALF-STEPS AND WHOLE-STEPS

Two piano keys that are next to each other (including the black keys) are a **HALF-STEP**.



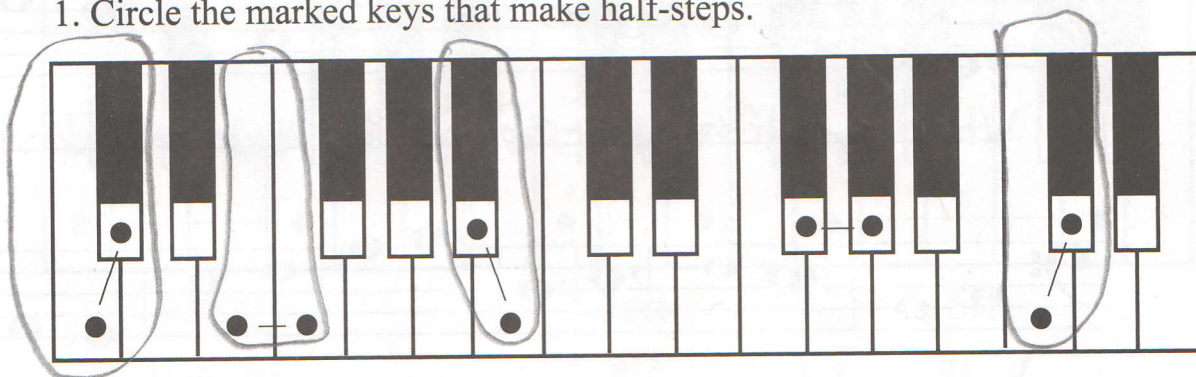
HALF-STEPS

A **WHOLE-STEP** skips one key.

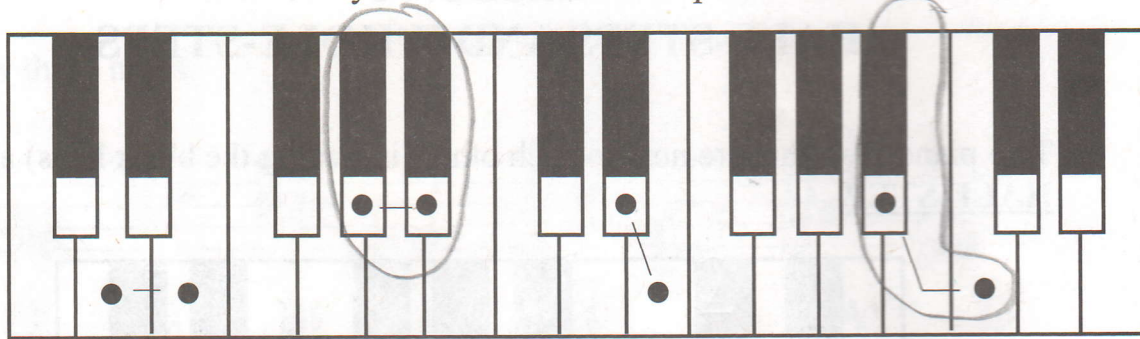


WHOLE-STEPS

1. Circle the marked keys that make half-steps.



2. Circle the marked keys that make whole-steps.



3. Write whole-step or half-step for each of these pairs of notes.

F# down to E whole-step

G down to F whole-step

A down to G whole-step

F down to E \flat whole-step

C# up to D half-step

A \flat up to B \flat whole-step

A up to B whole-step

A# up to B half-step

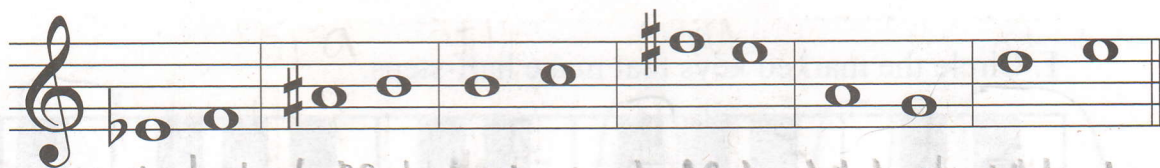
C down to B half-step

F down to E half-step

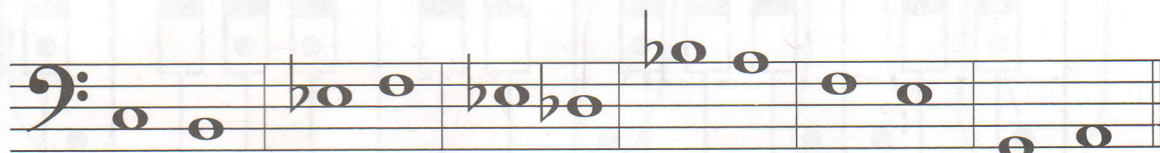
C up to D whole-step

B up to C half-step

4. Write whole-step or half-step for each of these pairs of notes.



Whole-step half-step Whole-step half-step Whole-step Whole-step



half-step Whole-step Whole-step Whole-step Whole-step half-step