

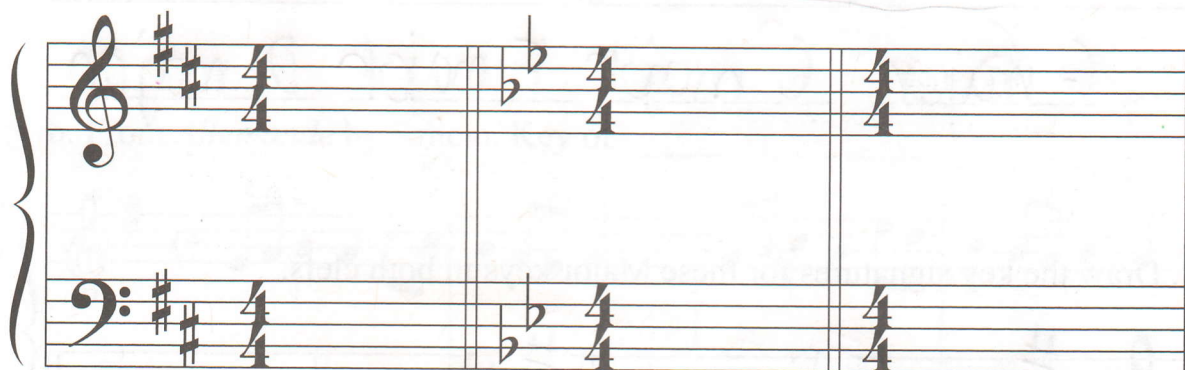
## LESSON 5

### MAJOR KEY SIGNATURES: C, G, D, AND F

The **KEY SIGNATURE** is found at the beginning of the music, between the clefs and the time signature.

The **KEY SIGNATURE** tells two things:

1. The **KEY** or **TONALITY** of the music.
2. Which notes in the music will receive **SHARPS** or **FLATS**.



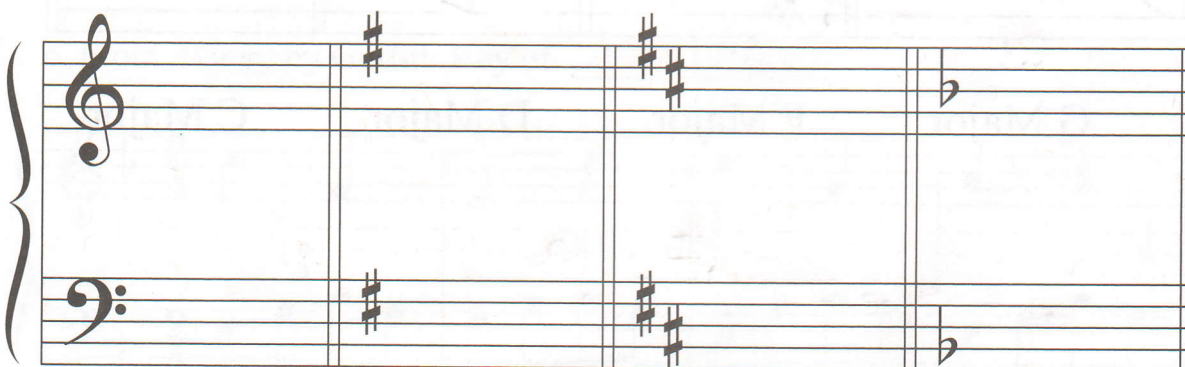
**SHARPS**

**FLATS**

**NO SHARPS  
OR FLATS**

(Key of C Major)

These are the key signatures for C Major, G Major, D Major, and F Major.



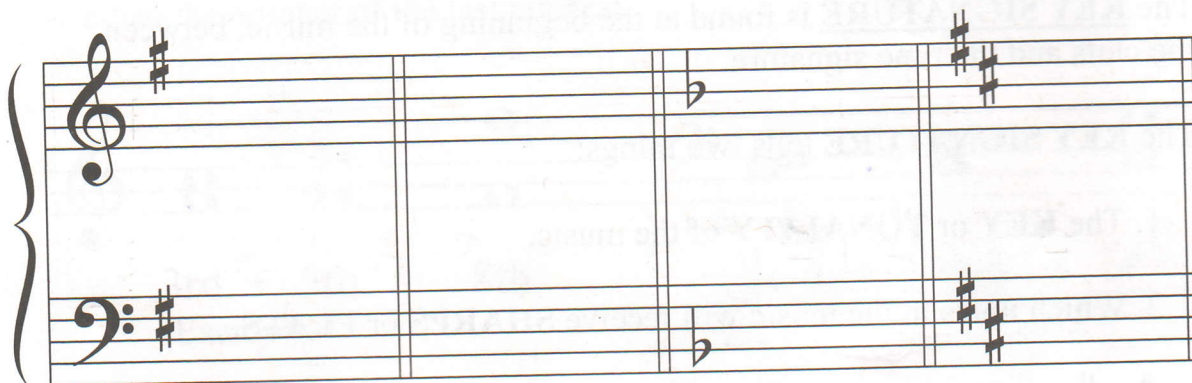
**C Major:**  
No Sharps  
or Flats

**G Major: F#**  
All F's are  
played as F#

**D Major: F# and C#**  
All F's and C's are  
played as F# and C#

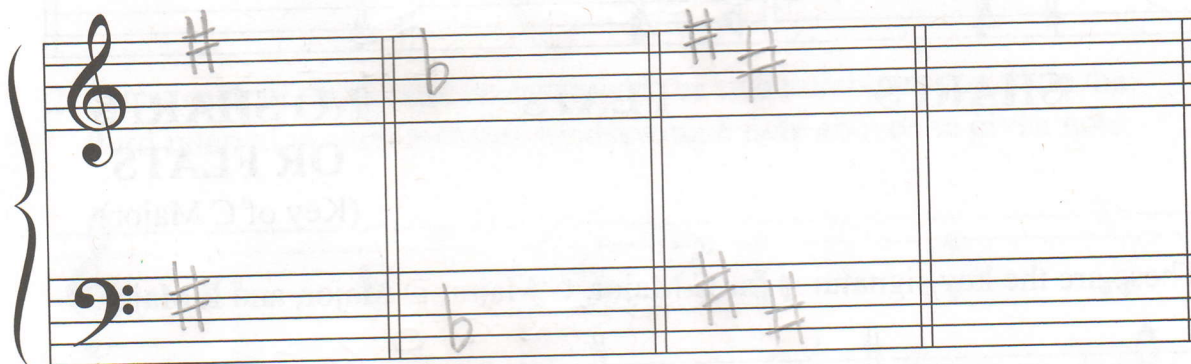
**F Major: Bb**  
All B's are  
played as Bb

1. Name these Major keys.



G major C major F major D major

2. Draw the key signatures for these Major keys in both clefs.



G Major

F Major

D Major

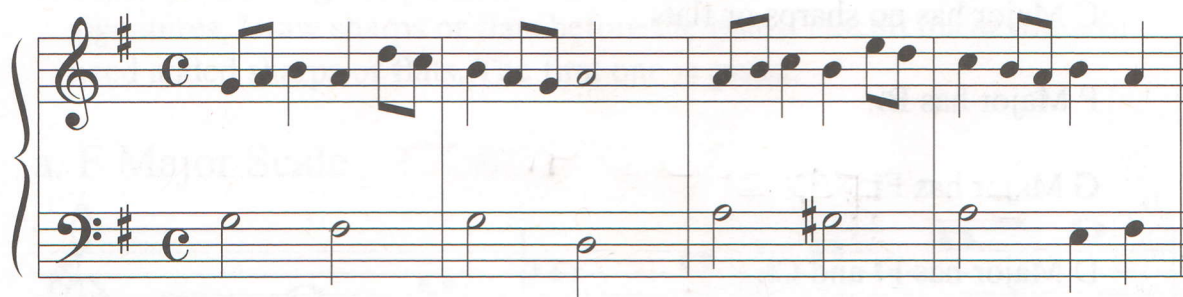
C Major

3. Write the name of the Major key for each example. The first one is given.

a. From *Minuet* by Hook. Key of C Major



b. From *Allemande* by Schein. Key of G Major



c. From *A Song* by Gurlitt. Key of F Major





d. From *The Cuckoo* by Müller. Key of C Major



4. Memorize these key signatures.

C Major has no sharps or flats.

F Major has B $\flat$ .

G Major has F $\sharp$ .

D Major has F $\sharp$  and C $\sharp$ .