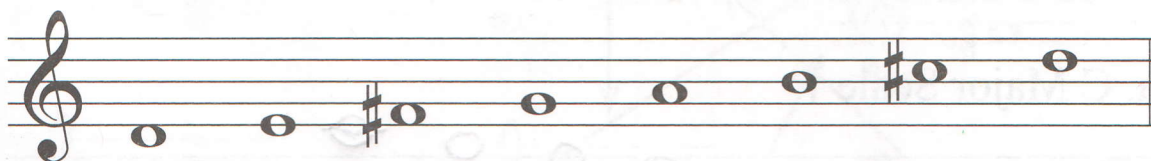


LESSON 6

MAJOR SCALES: C, G, D, AND F

MAJOR SCALES have eight notes which are all a 2nd apart. They begin and end with notes of the same letter name, and have all the sharps or flats from the key signature with the same name.

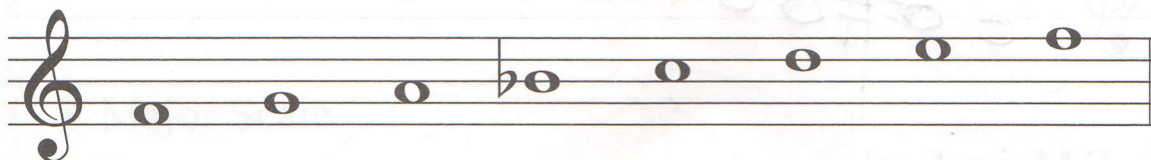
Example: **D Major Scale** begins and ends on **D**, and has **F#** and **C#**.



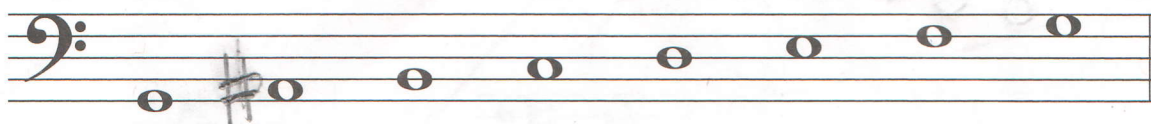
D MAJOR SCALE

1. Draw the missing sharps or flats to complete these scales. Do not use key signatures. Draw sharps or flats before the notes. Not all the scales will need added sharps or flats. The first one is given.

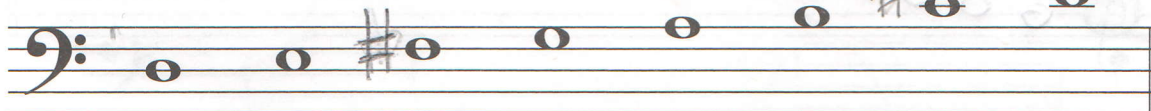
a. F Major Scale



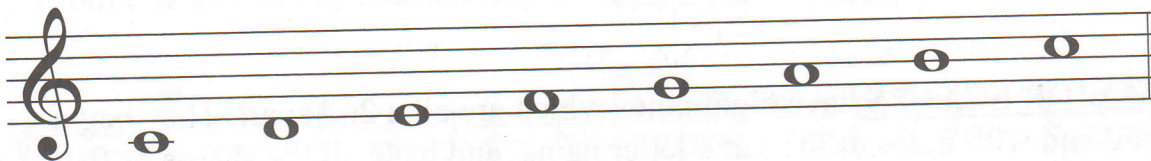
b. G Major Scale



c. D Major Scale

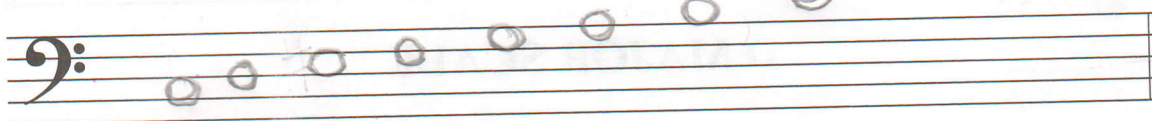


d. C Major Scale

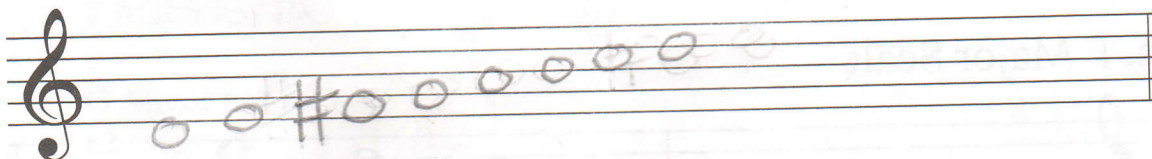


2. Draw these scales.

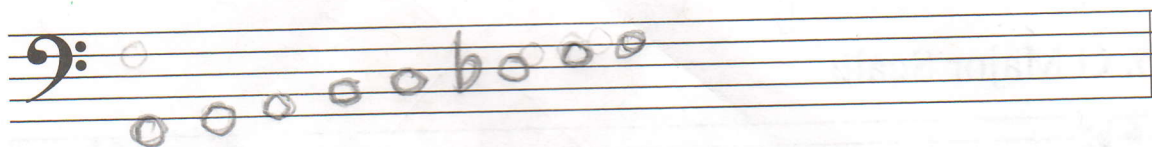
a. C Major Scale



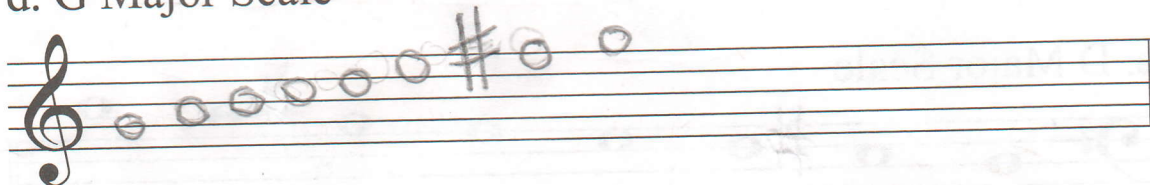
b. D Major Scale



c. F Major Scale



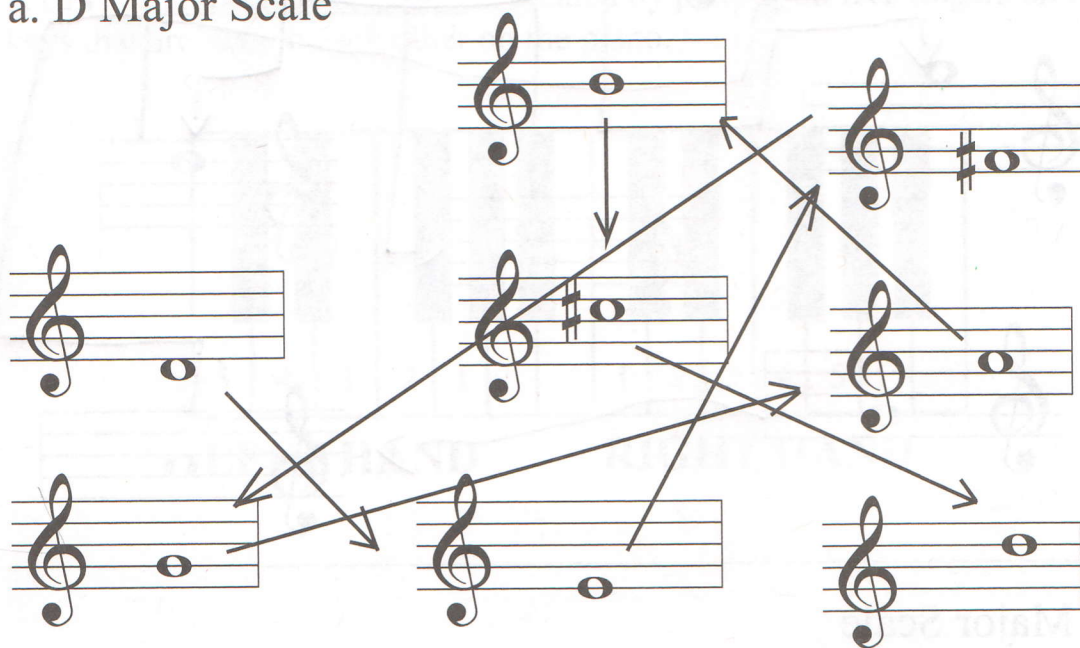
d. G Major Scale



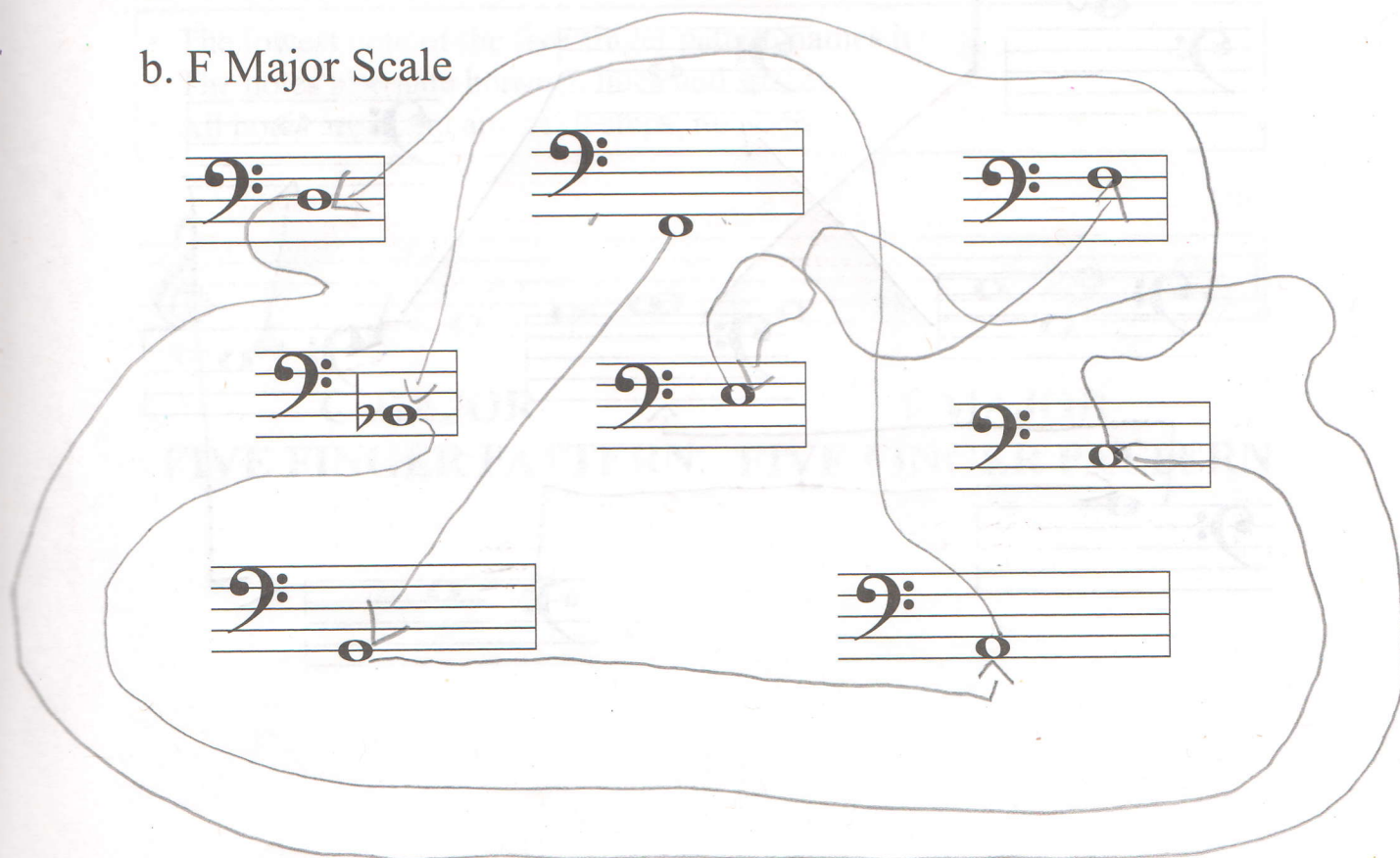
A SCALE GAME

The notes in each of these examples belong to one Major scale, but they are mixed up. Draw arrows connecting the notes to put them in the correct order. The first one is given.

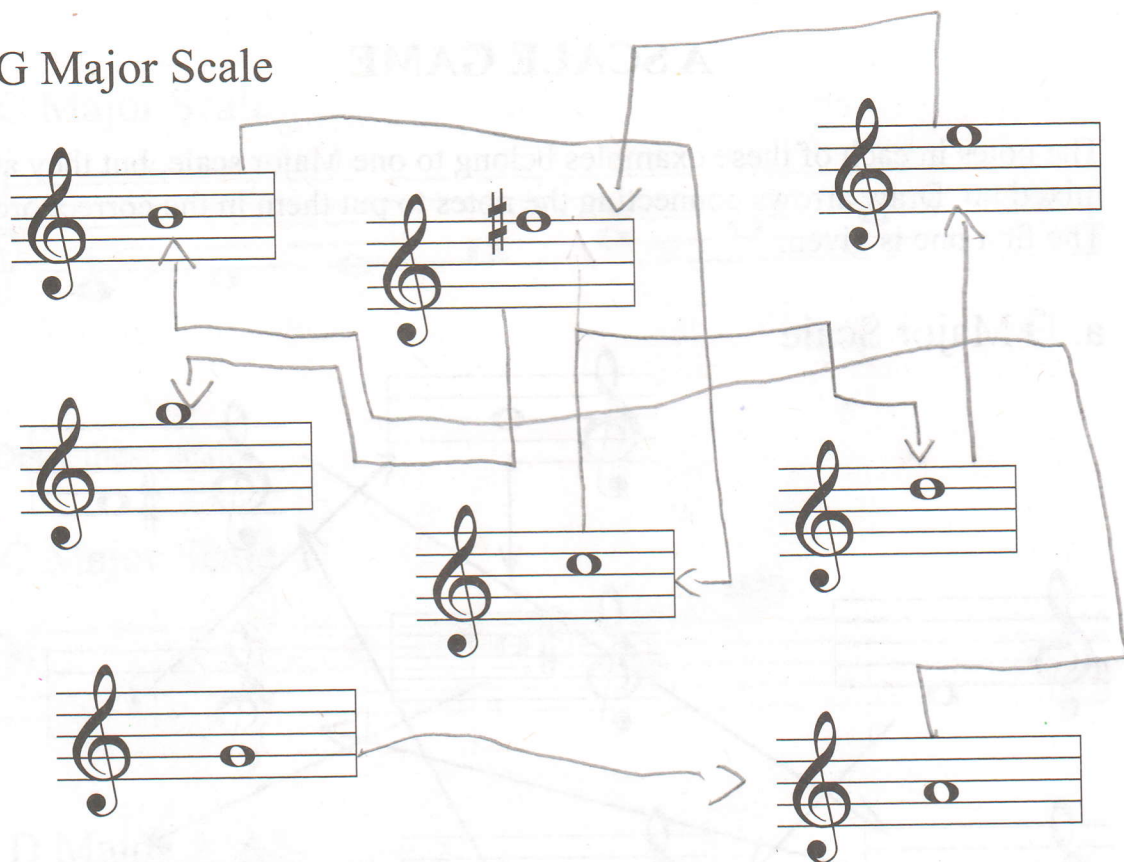
a. D Major Scale



b. F Major Scale



c. G Major Scale



d. C Major Scale

