

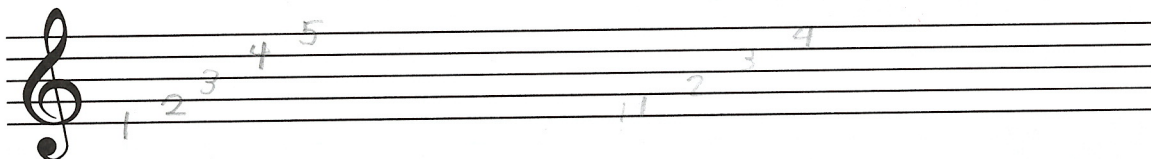
LESSON 1

THE GRAND STAFF

This is a **STAFF**. It has 5 lines and 4 spaces.



1. Number the lines and spaces on this staff.

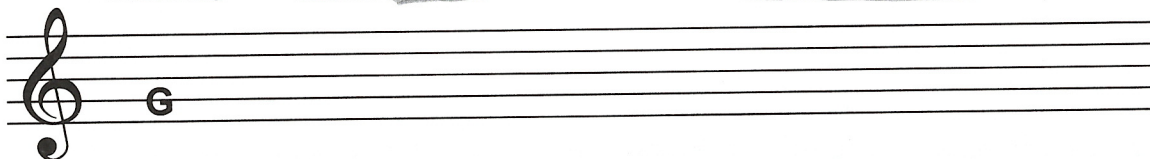


This is a **TREBLE CLEF**.

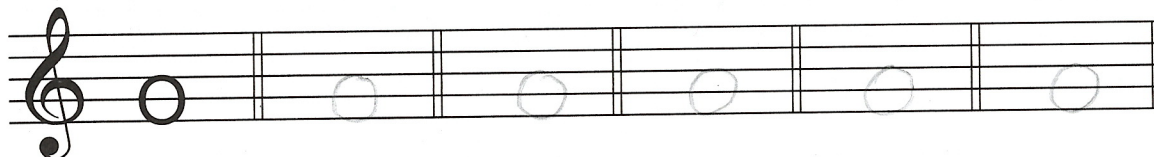
It is also called the G clef.



The circle of the treble clef surrounds the second line of the staff. The second line is the note "G."



2. Draw 6 circles around the second line (the G line) on this staff. The first one is given.



3. Draw 5 more treble clefs below. (The first one is given.)

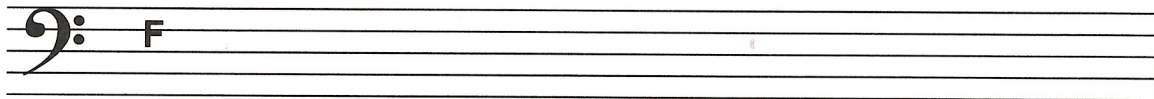


This is a **BASS CLEF**.

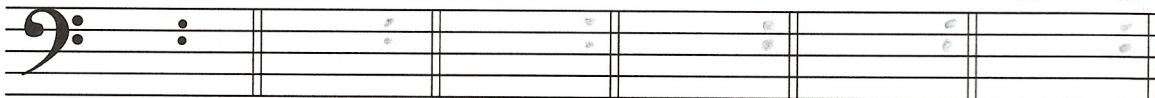


It is also called the F clef.

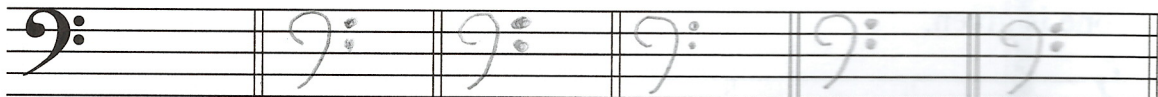
The two dots of the bass clef are above and below the fourth line of the staff.
The fourth line is the note "F."



4. Draw dots above and below the fourth line (the F line) on the staff below.
The first one is given.



5. Draw 5 more bass clefs on the staff below. (The first one is given.)

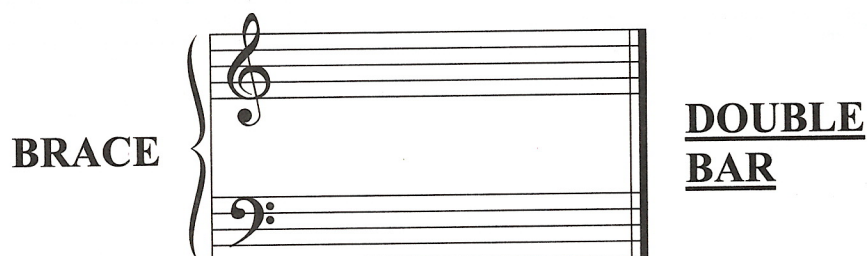


THE GRAND STAFF

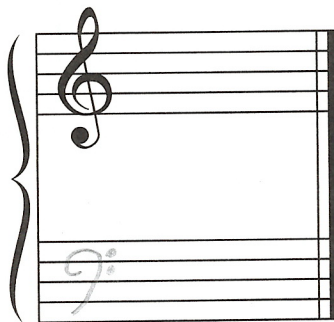
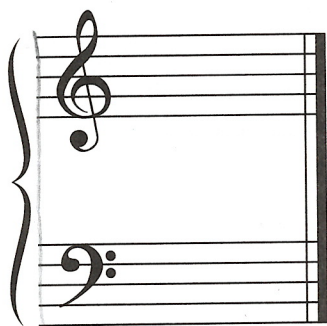
To make a **GRAND STAFF**, begin by joining the treble and bass clefs with a **BAR** on their left side.



To finish the Grand Staff, a **DOUBLE BAR** (two bars) is placed on the right side, and a **BRACE** on the left.

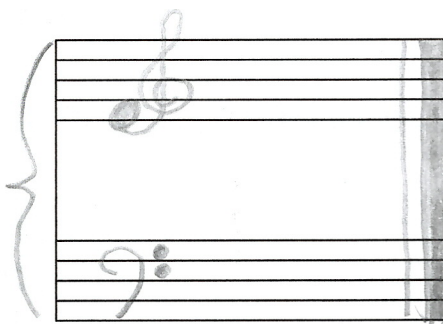
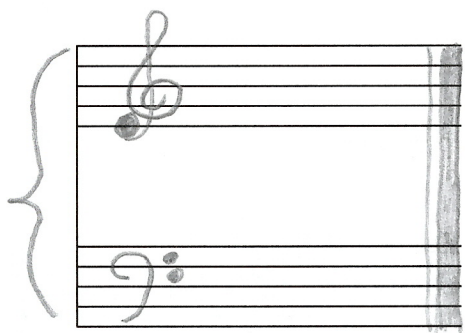
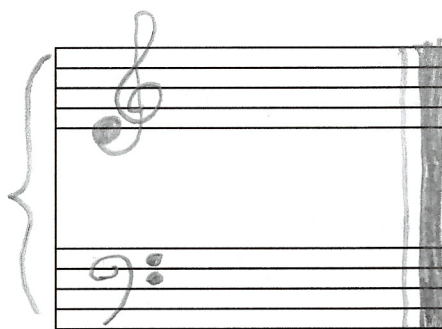
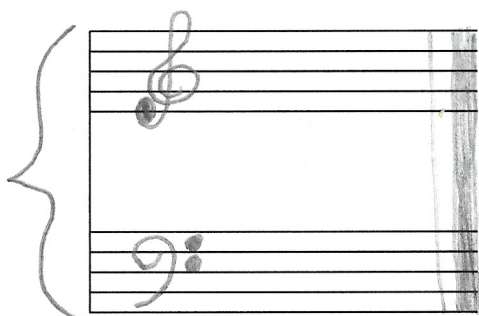


6. Complete each Grand Staff by adding its missing part.

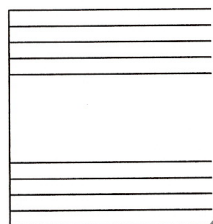
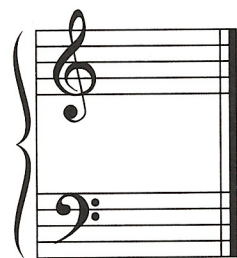
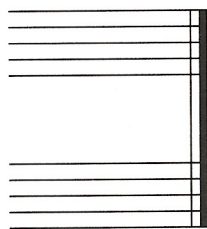


7. Make a Grand Staff out of each of the sets of staves below. Be sure to add all of the missing parts:

1. Treble Clef
2. Bass Clef
3. Brace
4. Double Bar



8. Match the symbols below with their names by drawing lines to connect them.



Grand Staff

Treble Clef

Brace

Bar

Bass Clef

Double Bar