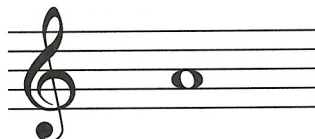


LESSON 2

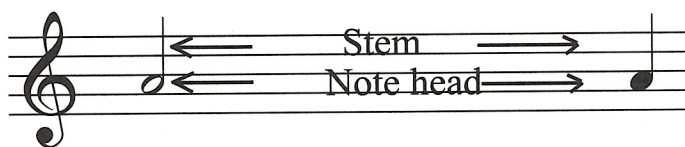
LINE NOTES AND SPACE NOTES

Musical notes come in many shapes. Whole notes are made of a circle. (For more information on whole notes, see Lesson 12.)



WHOLE NOTE

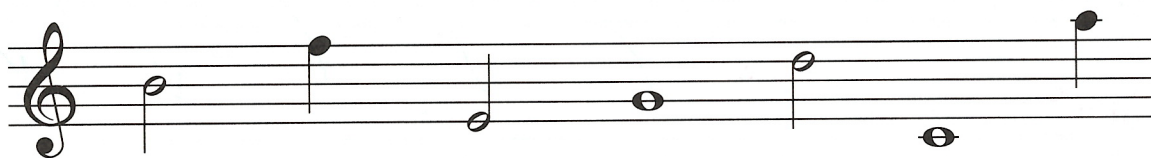
Half notes and quarter notes each have a head (or circle) and a stem (a line attached to the note.) (For more information on half notes and quarter notes, see Lesson 12.)



HALF NOTE

QUARTER NOTE

A **LINE NOTE** has a line going through its head.



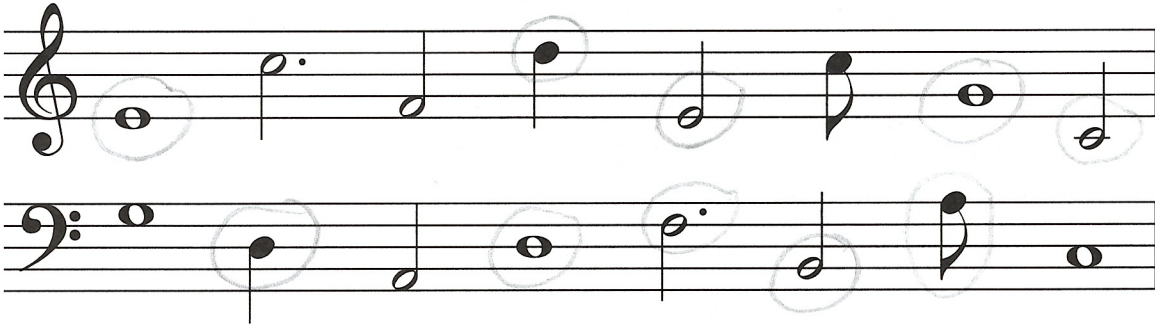
LINE NOTES

The heads of **SPACE NOTES** are between two lines, or above and below a line. There is no line going through the head of a space note.

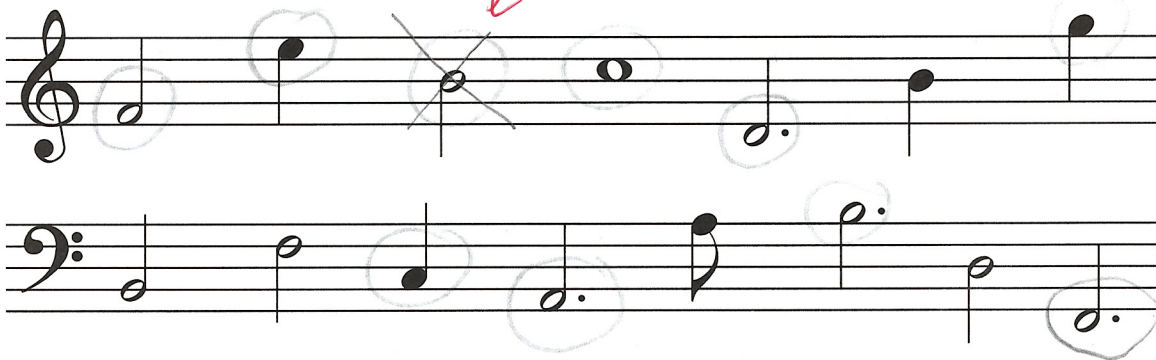


SPACE NOTES

1. Circle the line notes.



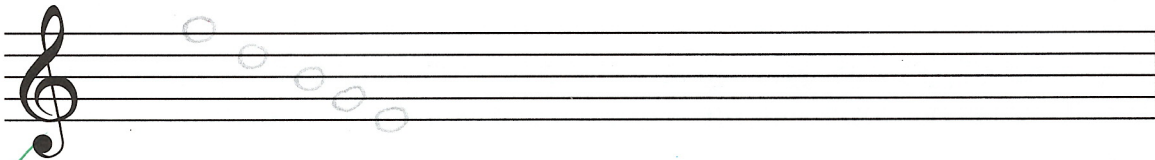
2. Circle the space notes.



3. Tell whether each of these notes is a line note or space note. Write "L" for line notes, and "S" for space notes.



4. Draw a whole note on each line of this staff.



5. Draw a whole note on each space of this staff.

