

4 means four beats in each measure.

4 means the quarter note gets one beat.

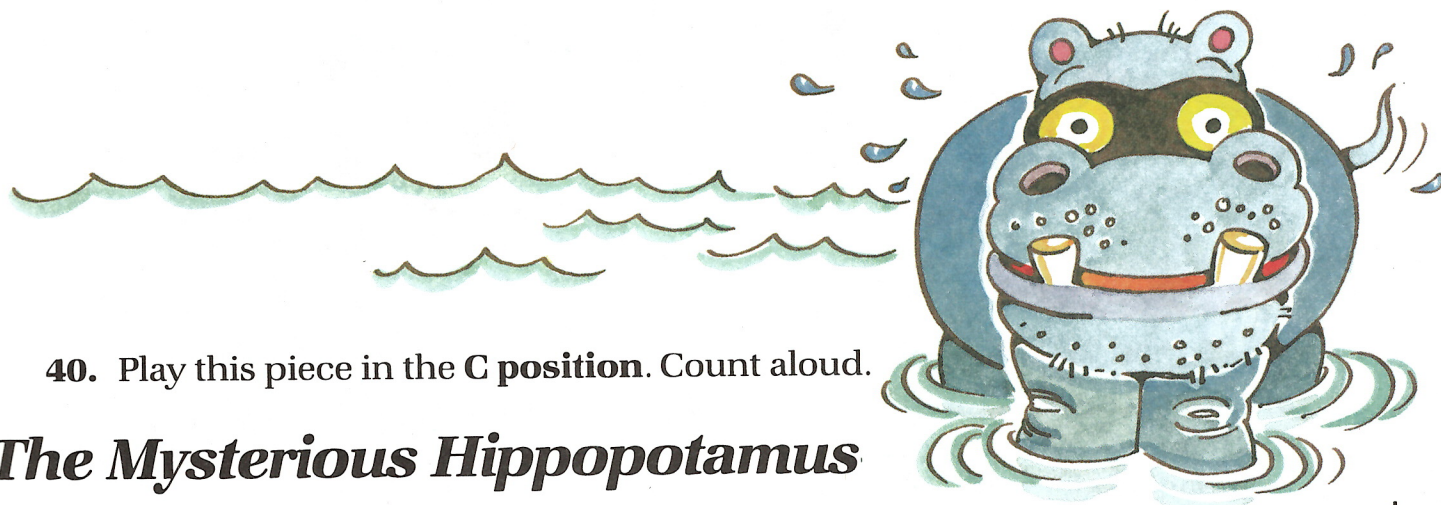
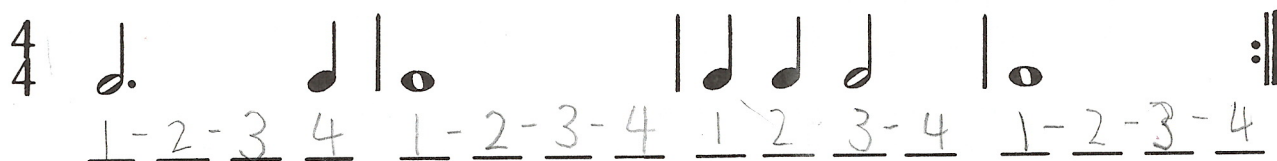
The **whole note**  gets four beats.

38. Clap and count this rhythm aloud.



Count: 1 2 3 4 1 2 3 4 (continue counting)
or: half note half note whole note hold it (continue counting)

39. Write the counts under these notes. Clap and count this rhythm aloud.



40. Play this piece in the **C position**. Count aloud.

The Mysterious Hippopotamus

R.H.

1 3 5 3 4 3 2 3 4 3 2 3 4 5

There's the hip - po - pot - a - mus, he is look - ing straight at us!

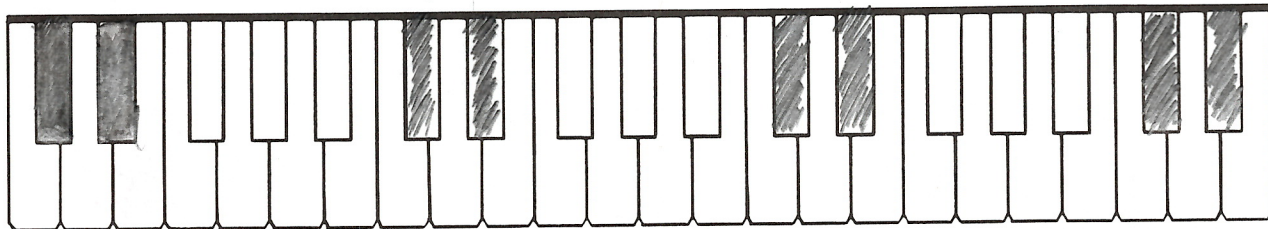
Is he smil - ing? I can't tell. Gee, I think he's swell!

L.H.

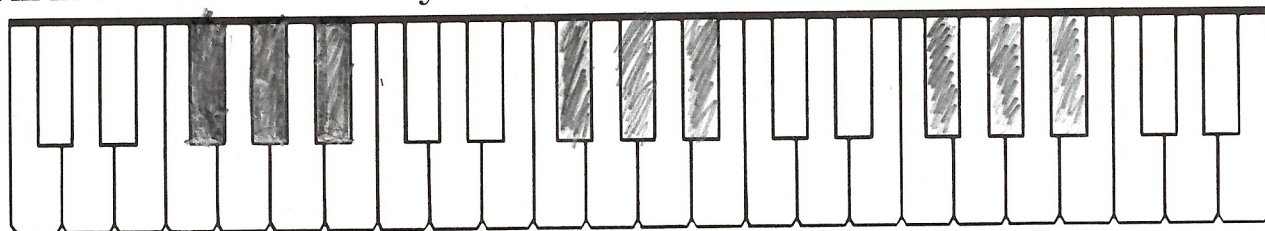
5 3 1 3 2 3 4 3 2 3 4 5

Review Quiz

41. Fill in the sets of 2 black keys.



42. Fill in the sets of 3 black keys.



43. Draw up stems on these notes.



Draw down stems on these notes.



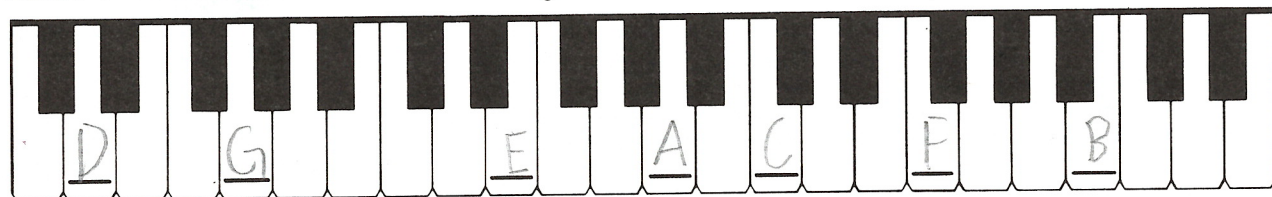
44. Write the music alphabet.

A B C D E F G

45. Write the alphabet letters in the C position.

C D E F G

46. Write the names of these white keys.

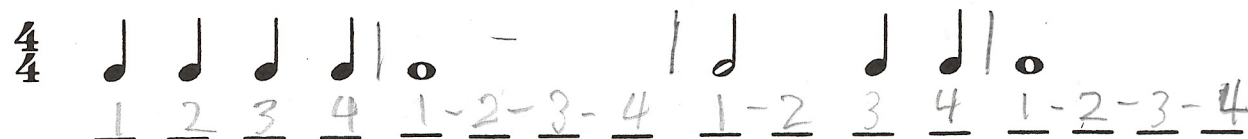
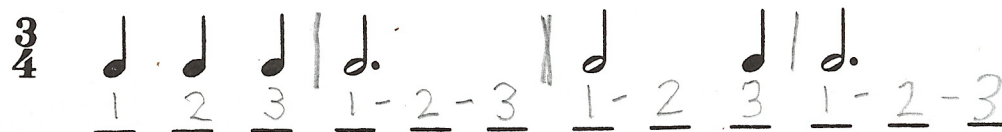


47. Write the names of these notes.



quarter note Whole note half note dotted half note

48. Divide these rhythms into measures with bar lines. Add a double bar line with a repeat sign at the end of each line. Write the counts below the notes.

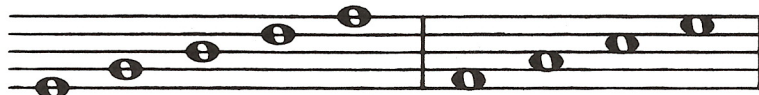


The Staff

The **staff** has lines and spaces. Notes are written on **lines** or in **spaces**.

Line notes

Space notes



49. How many lines does the staff have?

5

How many spaces does the staff have?

4

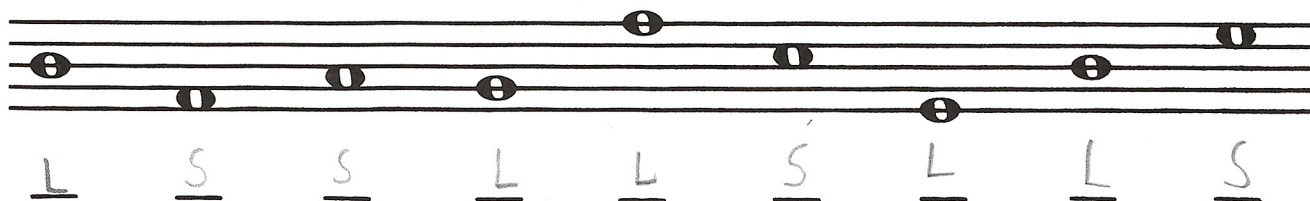
50. Number the lines from the bottom to the top.



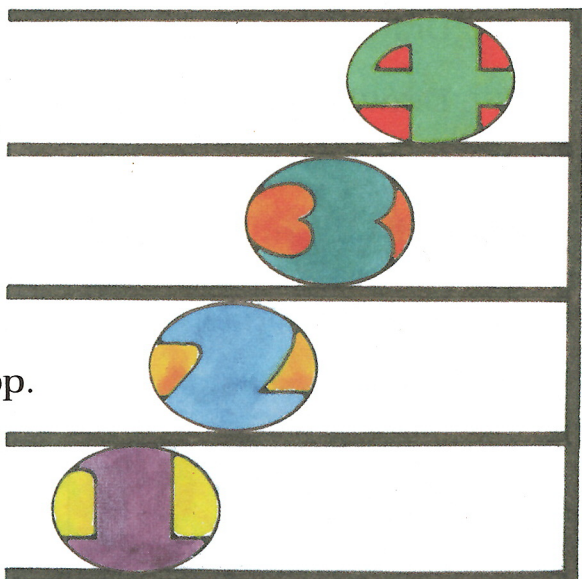
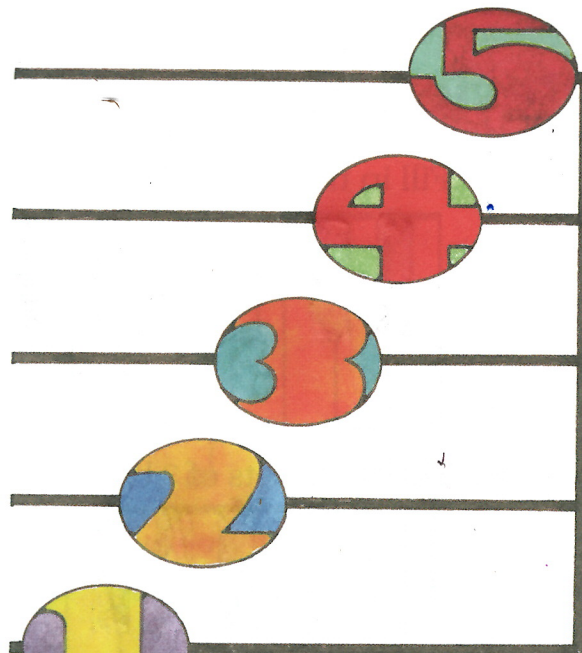
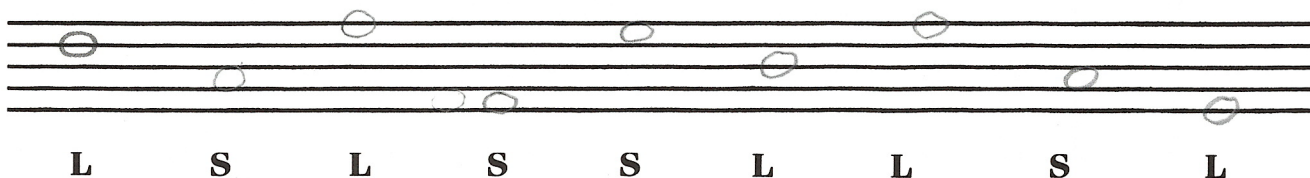
Number the spaces from the bottom to the top.



51. Write L for the line notes and S for the space notes.



52. Draw line and space notes on the staff above the letters.
Use whole notes.



Clef Signs

A **clef sign** is used at the beginning of each staff.



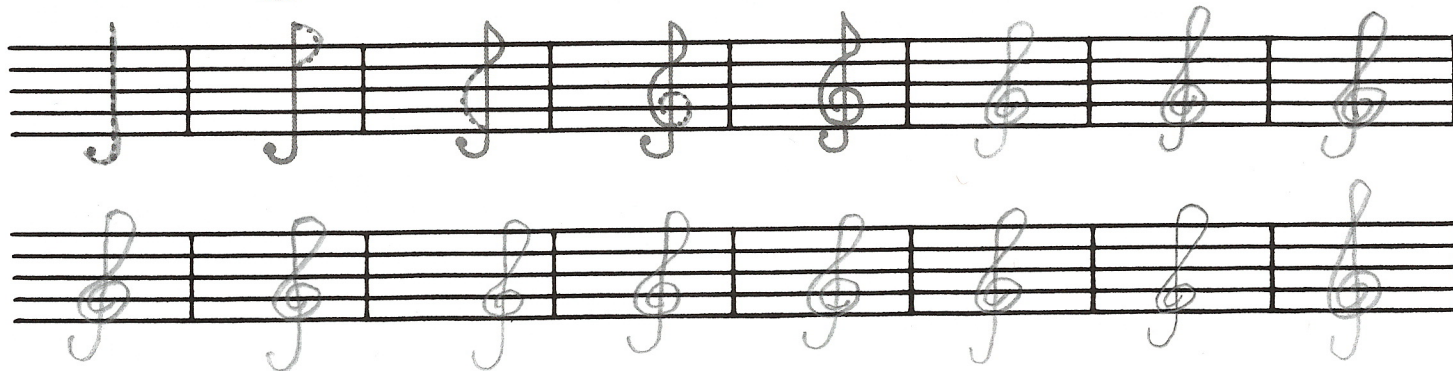
**Treble clef
or G clef**



2nd line



53. Trace what is shown,
then draw your own treble clefs.



**Bass clef
or F clef**



4th line

54. Trace what is shown, then draw your own bass clefs.

