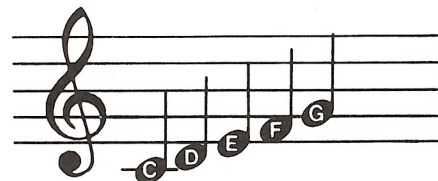
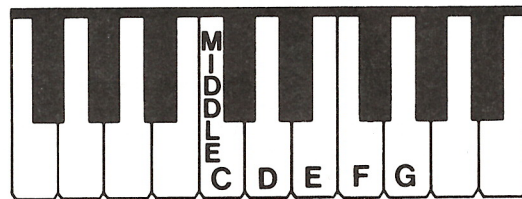


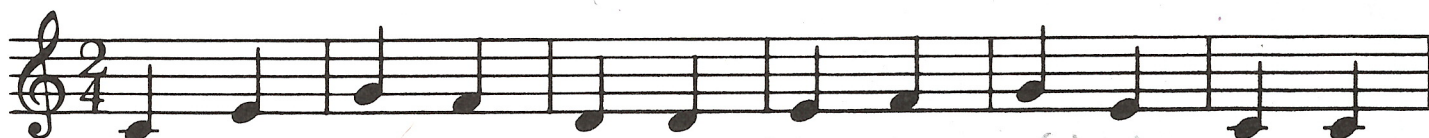
How Notes Move on the Staff



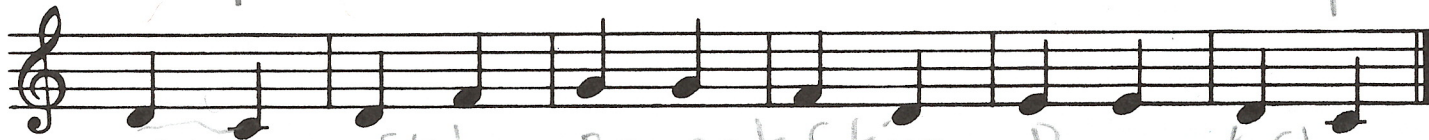
C Position (R.H.)



55. Write how these notes move on the staff. Write *step*, *skip*, or *repeat*. Play and name these notes.



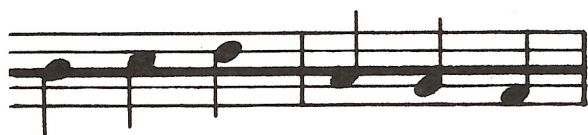
skip Step Repeat Step Skip Repeat



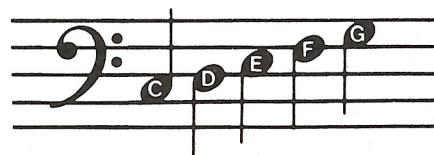
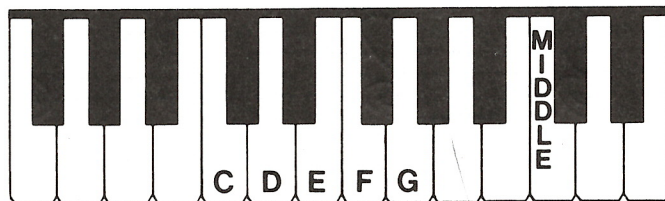
Step skip Repeat Skip Repeat Step

Notes **on or above** the middle line have **down stems**.

Notes **below** the middle line have **up stems**.



C Position (L.H.)



56. Write how these notes move on the staff. Write *step*, *skip*, or *repeat*. Play and name these notes.



Step Skip Skip Repeat Step Step

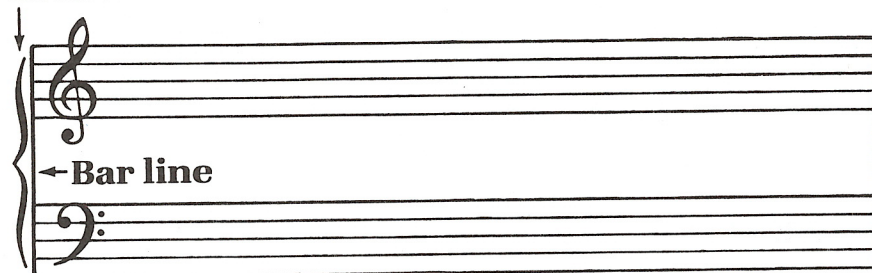


Skip Repeat Step Skip Skip Repeat

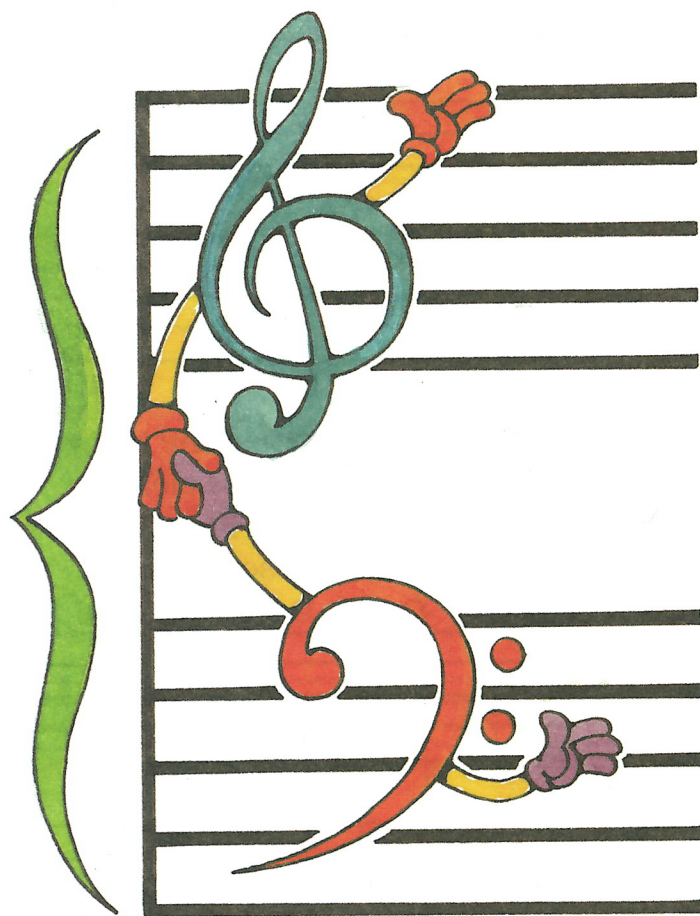
The Grand Staff

The **grand staff** is formed by joining the treble staff and bass staff with a **brace** and **bar line**.

Brace



57. Trace these braces and bar lines to form grand staves.
Use a ruler to draw the bar lines.



58. Draw braces and bar lines to form grand staves.
Draw treble and bass clef signs.

