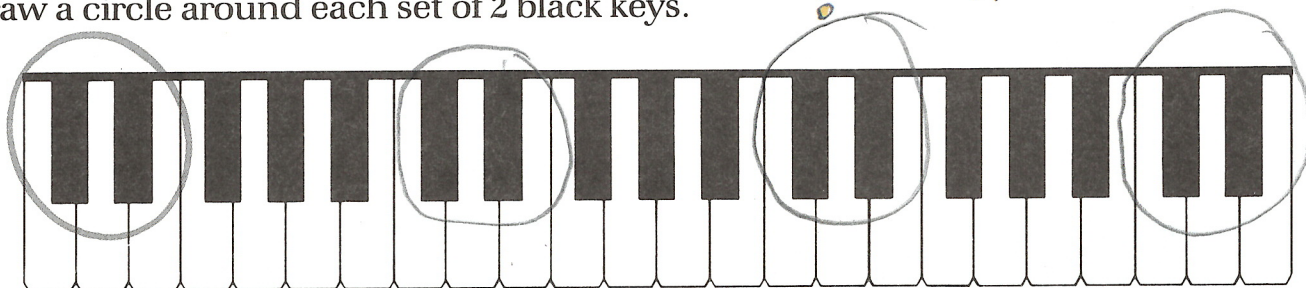


The Piano Keyboard

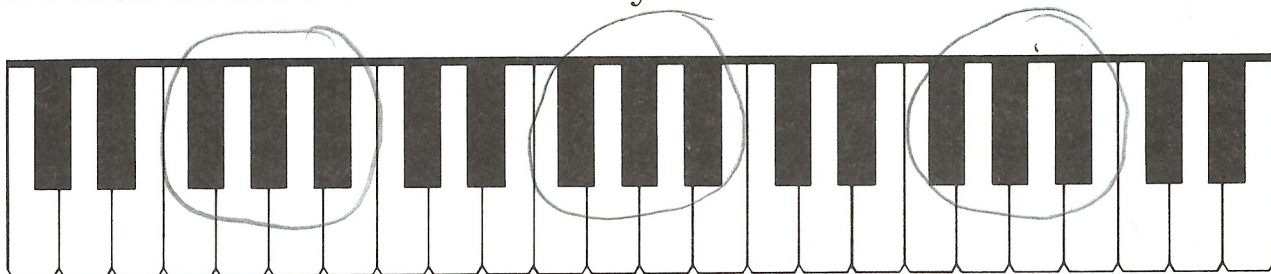
The keyboard has **white** and **black** keys.
The black keys are in sets of **2's** and **3's**.



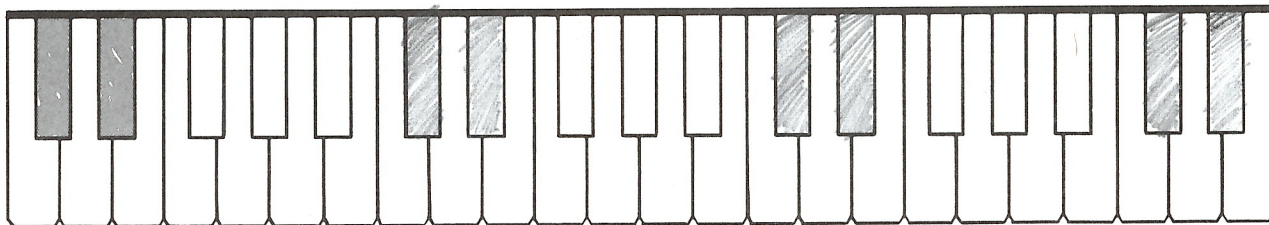
1. Draw a circle around each set of 2 black keys.



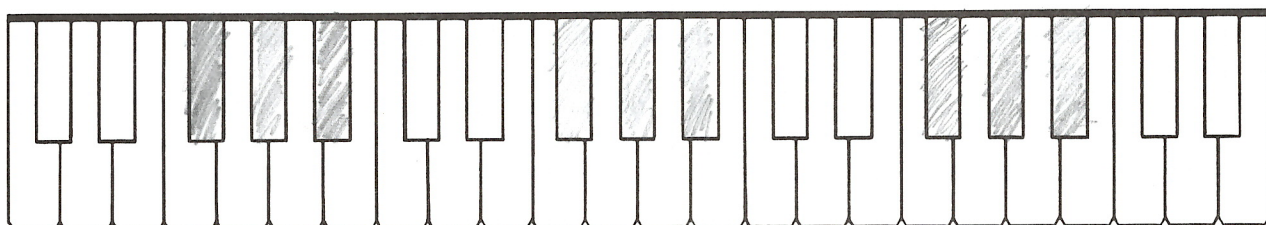
2. Draw a circle around each set of 3 black keys.



3. Fill in all the sets of 2 black keys.



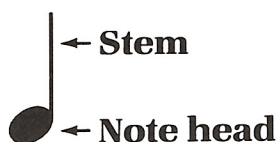
4. Fill in all the sets of 3 black keys.



Rhythm in Music

Different kinds of notes are used to make **rhythm** in music. Some notes are short, while others are held for a longer time.

Quarter note

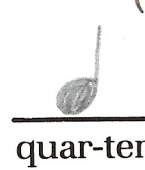
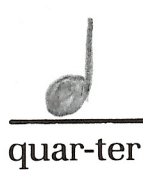


Half note



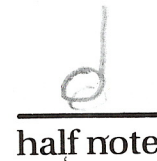
8. Draw three quarter notes. Clap and count this rhythm.

Count:



9. Draw three half notes. Clap and count this rhythm.

Count:



10. Use any three black keys and make up a melody for this song. Write finger numbers under notes (R.H.) or over notes (L.H.) for your melody.

The Moon

R.H.



Watch

the

moon

climb

up

high,

See

it

light

the

whole

sky!

L.H.



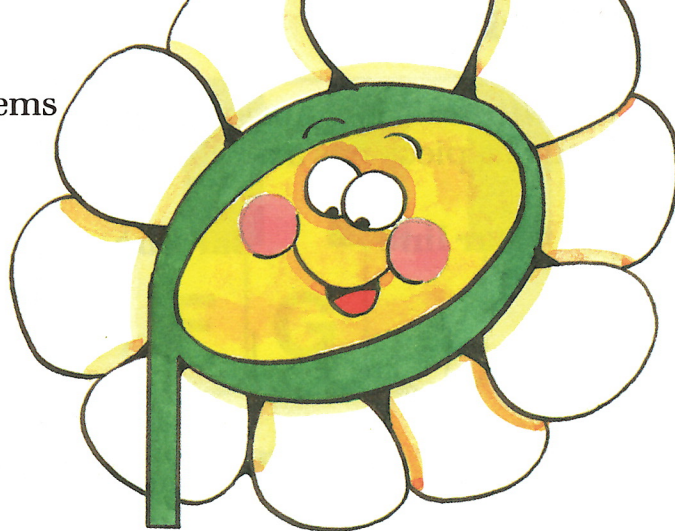
Stems on Notes

A **stem** may go up or down on a note. Up stems go on the **right** side, and down stems go on the **left** side.

Up stem



Down stem



11. Draw up stems on these notes.

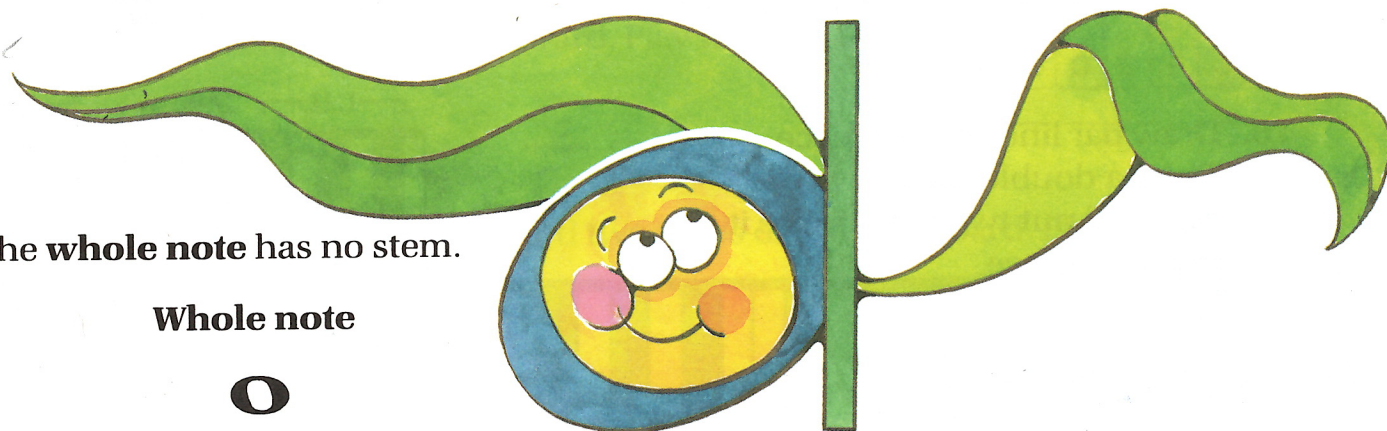


12. Draw down stems on these notes.



The **whole note** has no stem.

Whole note



13. Draw three whole notes. Clap and count this rhythm.



Count: whole note hold it

whole note hold it

whole note hold it

whole note hold it

14. Write the names of these notes.



quarter

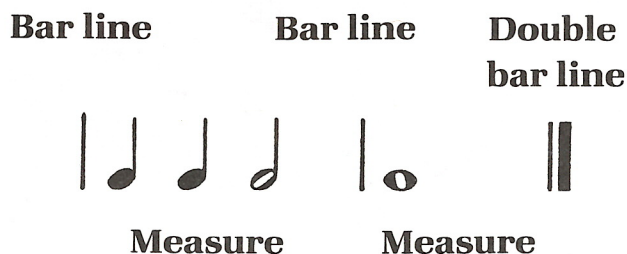
Whole

half note

quarter

Bar Lines

Bar lines divide music into **measures**. The end of a piece has a **double bar line**.

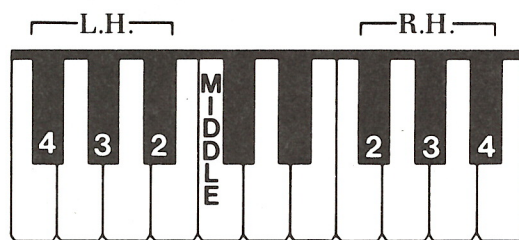


The **repeat sign** :|| is shown by two dots before a double bar line. Repeat the music from the beginning.

15. Draw bar lines to separate these notes into measures. Use a double bar line at the end. Clap and count this rhythm.



16. Draw bar lines in this piece.
Draw a double bar line at the end and put two dots before it.
Play this piece.



My Spotted Cat

bar line bar line bar line bar line

R.H. 2 2 2 3 4 3 2 3 4 3 2 3 4 3

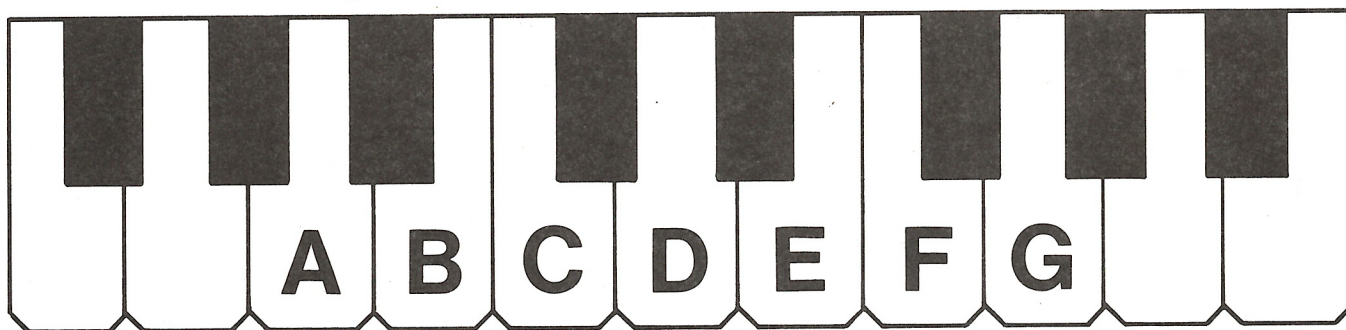
1. Once I had a spot - ted cat, she was the best cat ev - er.
2. She had fluff - y fur and tail, and we all called her Sas - sy.

When I called her name out loud, she would be - gin to purr!
She was lots of fun to play with, roll - ing 'round with me!

L.H. 4 4 4 3 2 3 4 3 2 3 4 3 4 3 4

bar line bar line bar line double bar line with repeat sign

The Music Alphabet



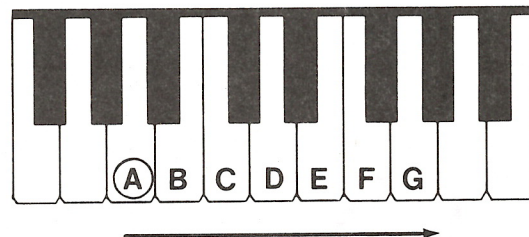
17. How many letters are there in the music alphabet?

7

18. When you play and say the music alphabet forward, you go **up** the keyboard to the **right**.

Write the music alphabet forward. Play it.

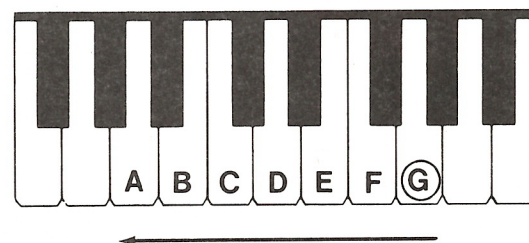
A B C D E F G



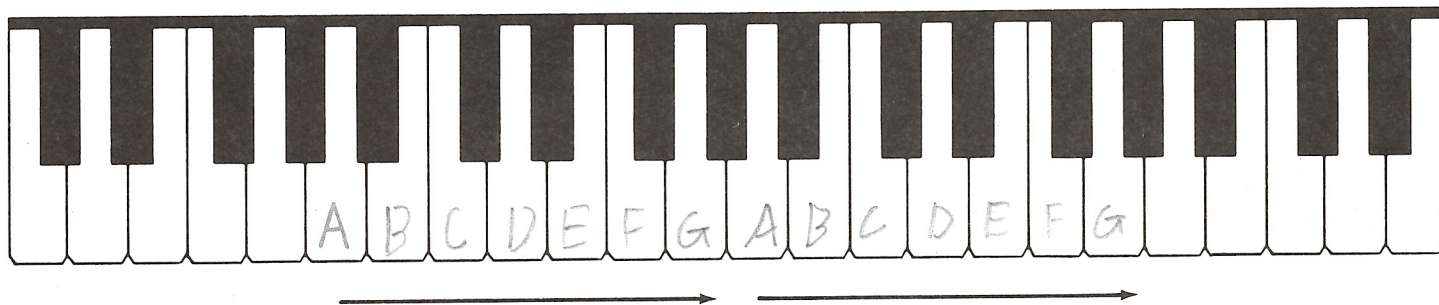
19. When you play and say the music alphabet backward, you go **down** the keyboard to the **left**.

Write the music alphabet backward. Play it.

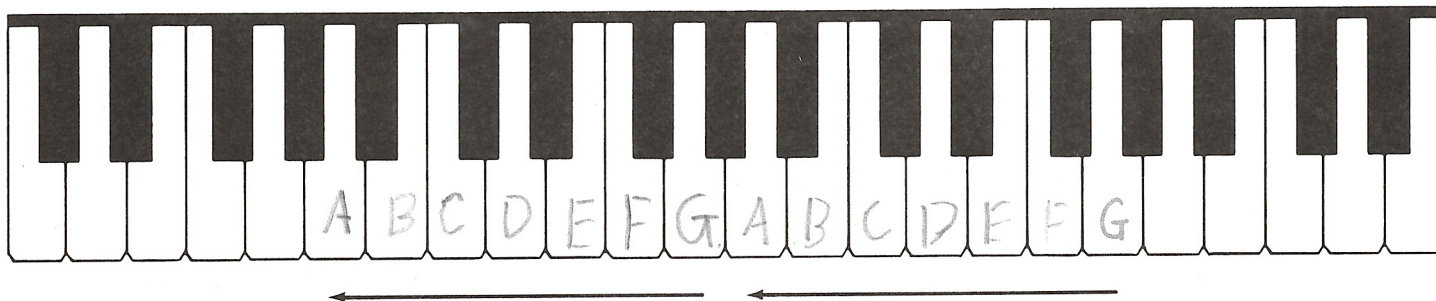
A B C D E F G



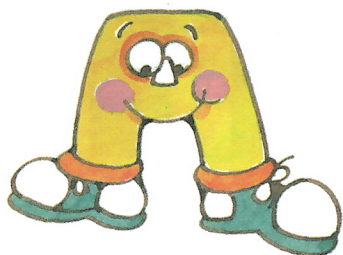
20. Write the music alphabet forward two times on this keyboard. Play it.



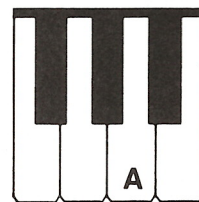
21. Write the music alphabet backward two times on this keyboard. Play it.



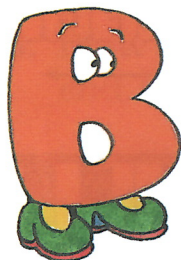
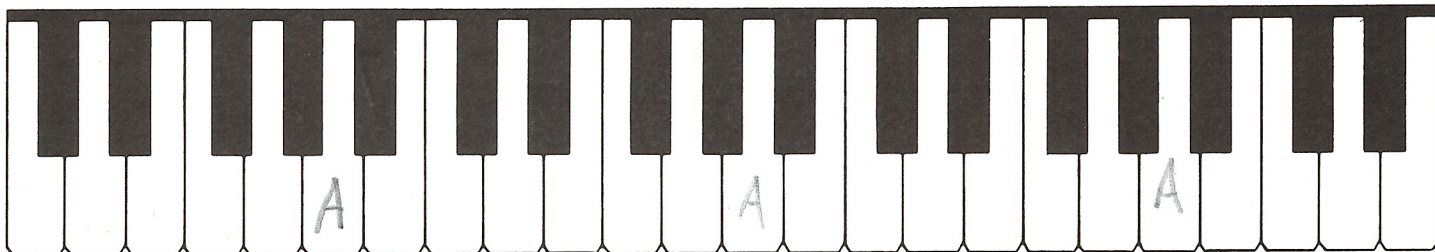
White Key Names



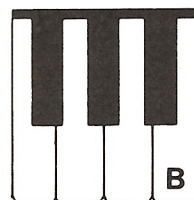
A is between the 2nd and 3rd keys in the 3 black key set.



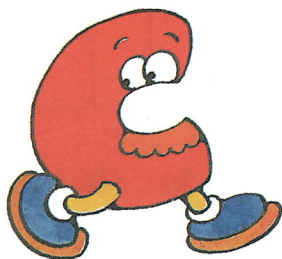
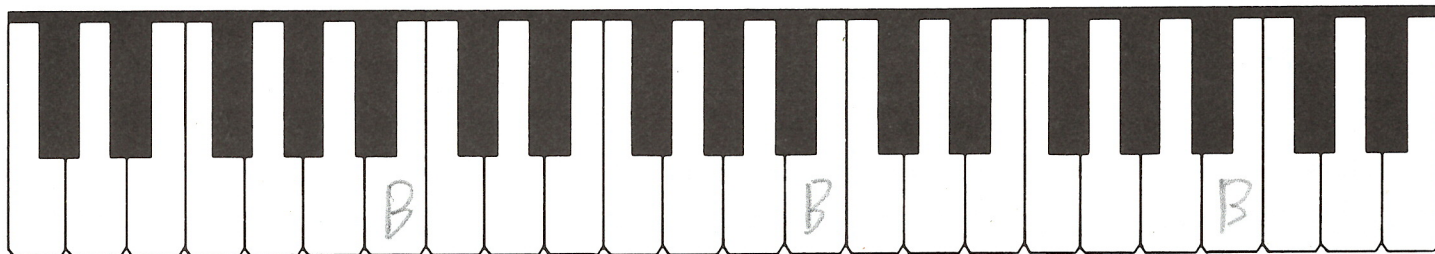
- 22.** Write an A on all the A's on this keyboard.
Play all the A's on your piano.



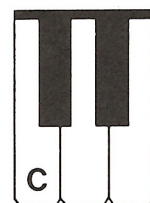
B is to the right of the 3 black key set.



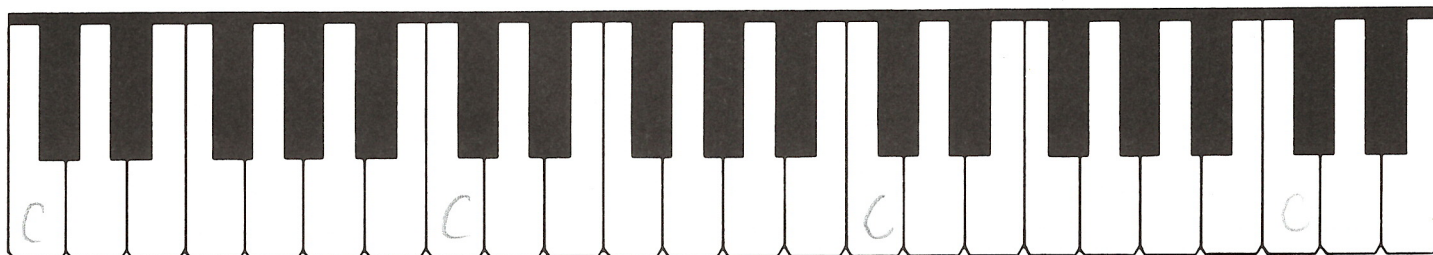
- 23.** Write a B on all the B's on this keyboard.
Play all the B's on your piano.



C is to the left of the 2 black key set.

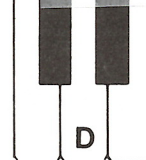


- 24.** Write a C on all the C's on this keyboard.
Play all the C's on your piano.

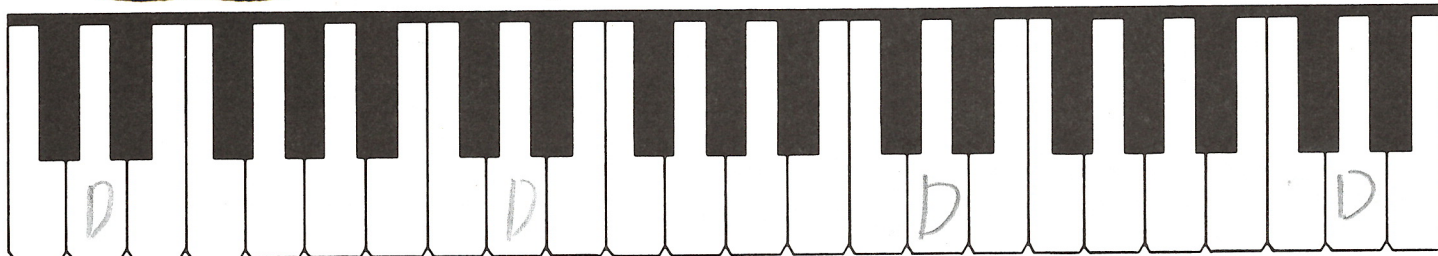




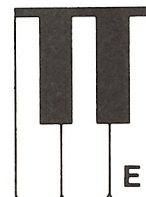
D is in the middle of the 2 black key set.



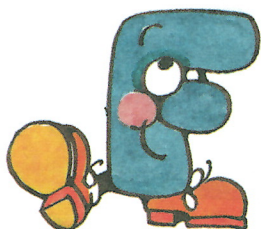
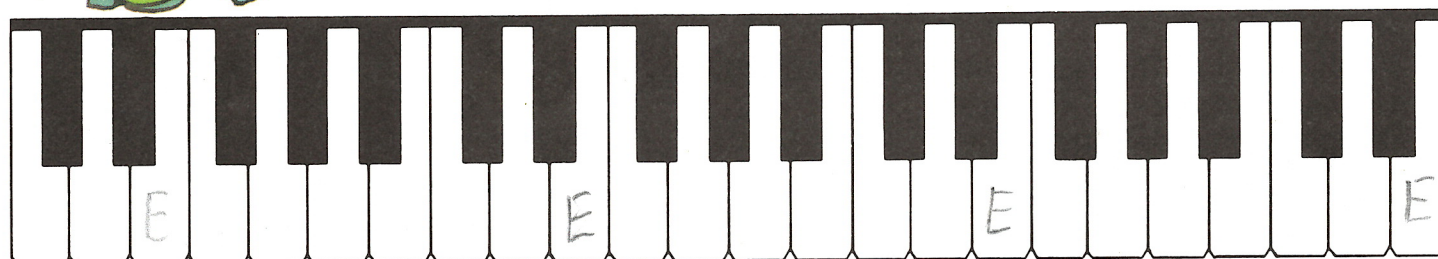
- 25.** Write a *D* on all the D's on this keyboard.
Play all the D's on your piano.



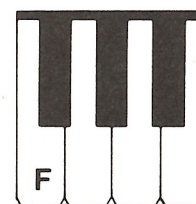
E is to the right of the 2 black key set.



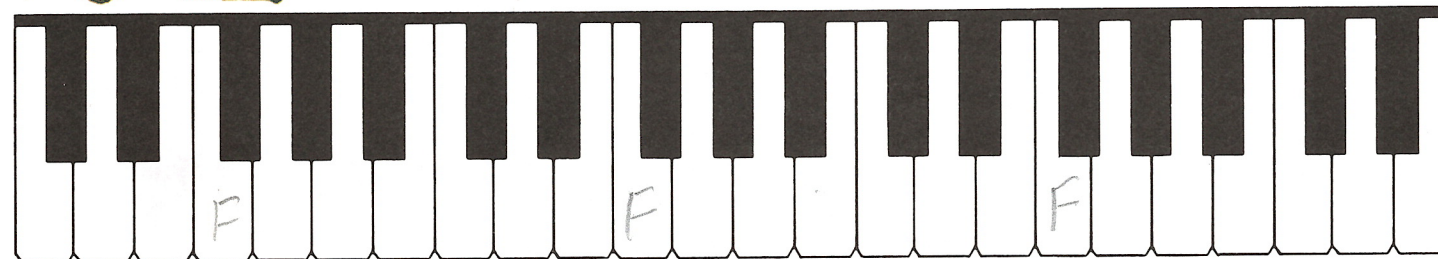
- 26.** Write an *E* on all the E's on this keyboard.
Play all the E's on your piano.



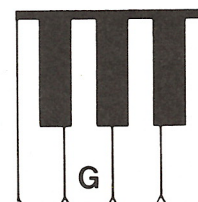
F is to the left of the 3 black key set.



- 27.** Write an *F* on all the F's on this keyboard.
Play all the F's on your piano.



G is between the 1st and 2nd keys
in the 3 black key set.



- 28.** Write a *G* on all the G's on this keyboard.
Play all the G's on your piano.

