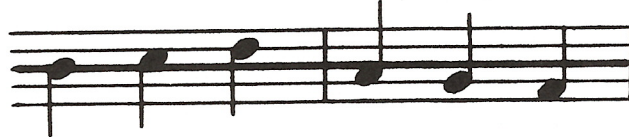


C Position

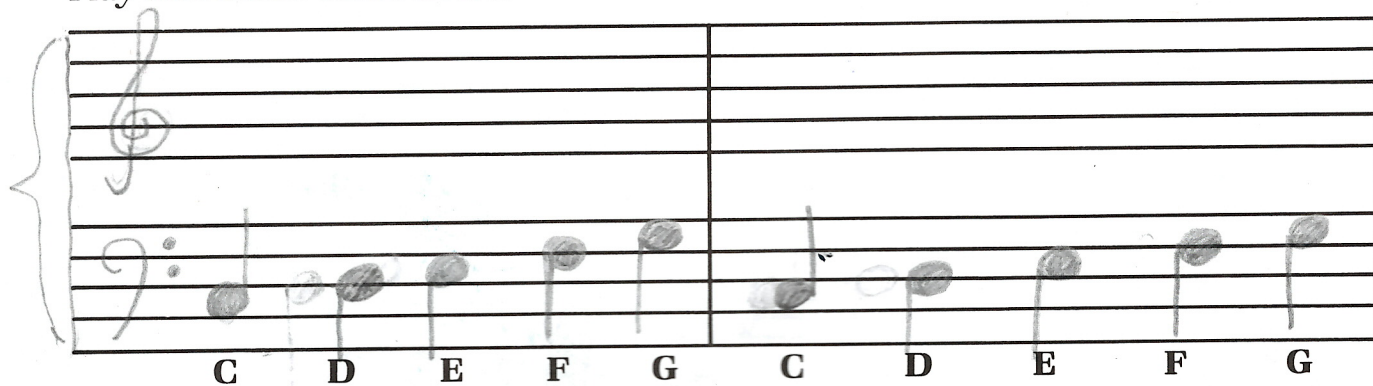


Notes **on or above** the middle line have **down stems**.

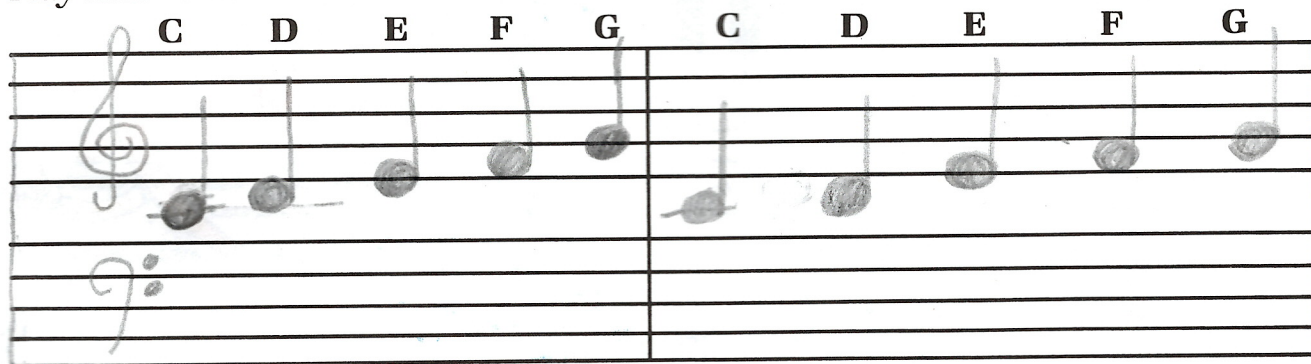
Notes **below** the middle line have **up stems**.



59. Draw a brace and bar line to form the grand staff.
 Draw a treble and bass clef sign.
 Draw the C position notes in the **bass clef** two times.
 Play and name these notes.



60. Draw a brace and bar line to form the grand staff.
 Draw a treble and bass clef sign.
 Draw the C position notes in the **treble clef** two times.
 Play and name these notes.



61. Write the names of these notes. Play them.



Dynamics

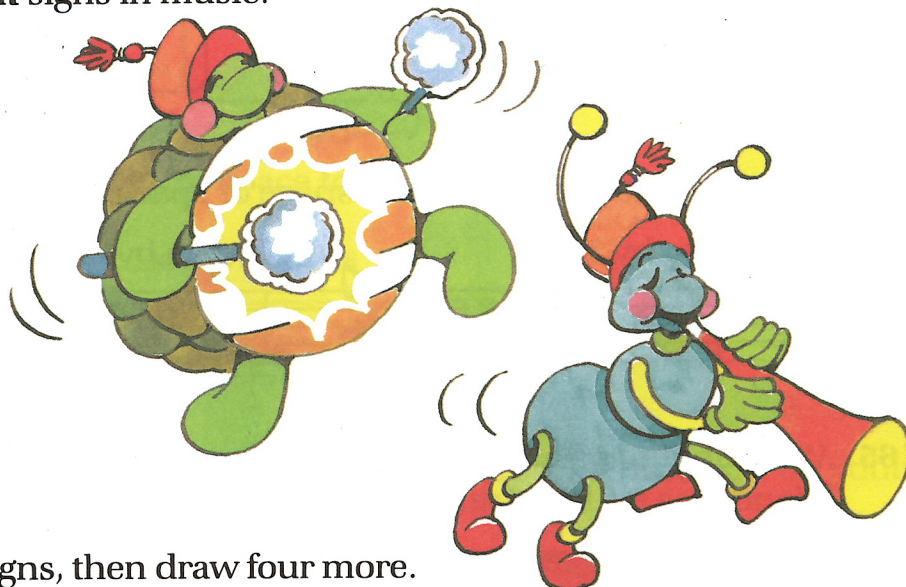
Dynamics are **loud** and **soft** signs in music.

f means **loud**.

Its Italian name is ***forte***.

p means **soft**.

Its Italian name is ***piano***.



62. Trace the first two ***f*** signs, then draw four more.



63. Trace the first two ***p*** signs, then draw four more.



64. Read the words of this song.

At the beginning of each line, write the dynamic sign that matches the words of that line. Play this piece.

Our School Band

1

f Hear the drum-mer play-ing loud. "Boom boom," goes the sound so clear!

p Hear the clar-i-net so soft, pleas-ing to the ear.

5