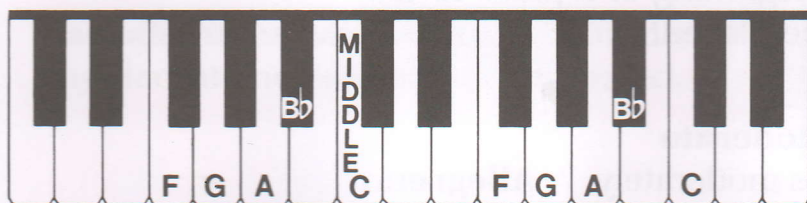


F Major Position



Key Signature for F Major



21. Write the names of these notes, then play them.



F G A Bb C A C Bb A Bb C

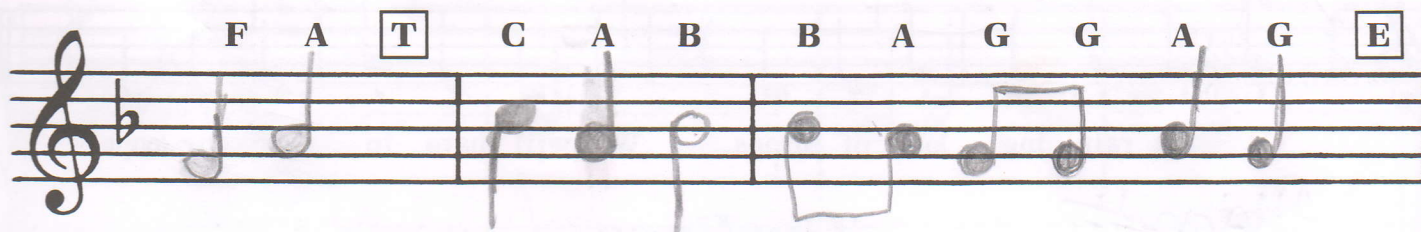


C B A G F A G A B G F

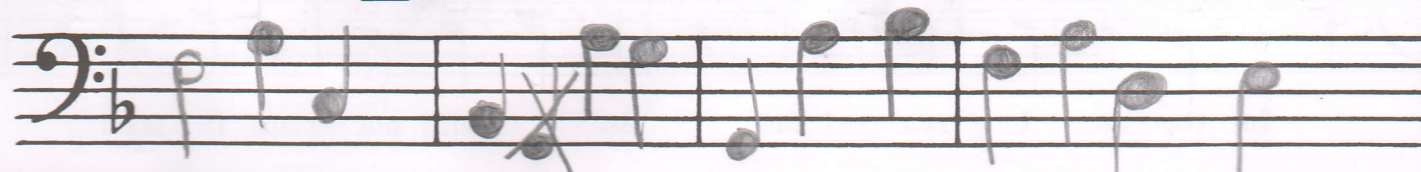
Note-Spelling Game

22. Draw notes below the letters **without** squares.

Use quarter, half, or whole notes. Play and name these notes.

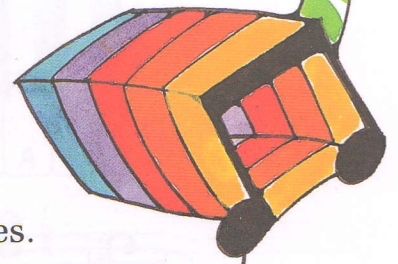


F A C T B A G G A B F A D E



Two Eighth Notes

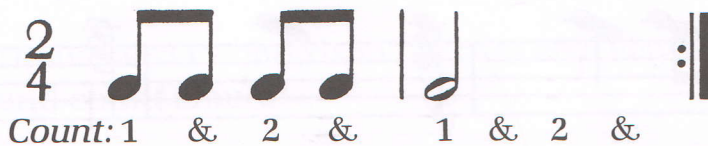
Two eighth notes equal one quarter note. They are connected with a **beam**.



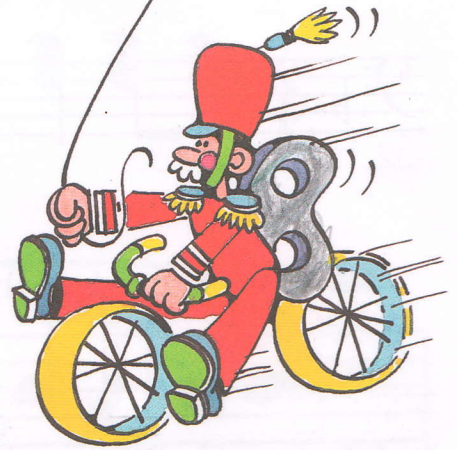
23. Add a beam to these pairs of notes to form two eighth notes.



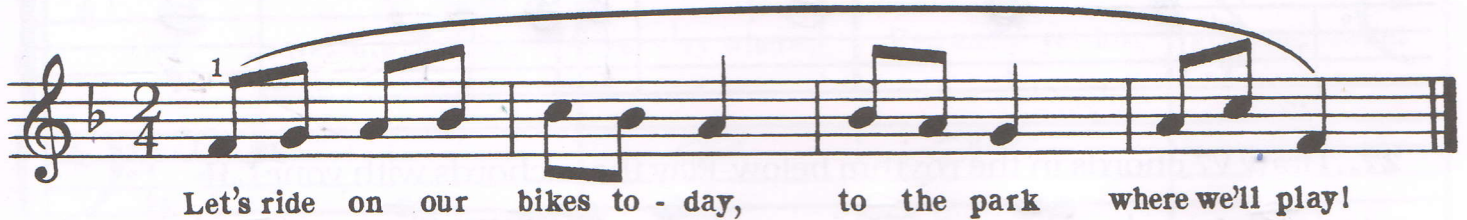
Eighth notes may be counted by saying *and* (&) after the number.



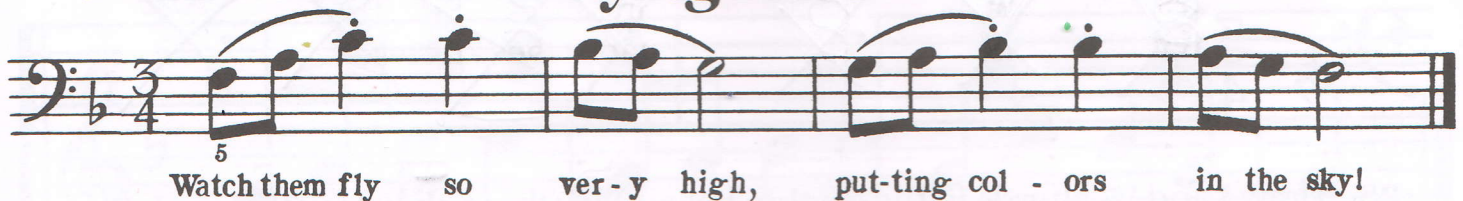
24. Write the counts below the words of each piece.
Then write a tempo mark at the beginning of each line.
Play these pieces and count aloud.



Bike Ride



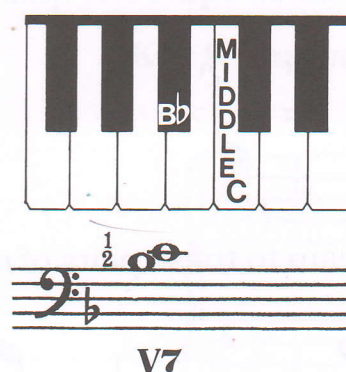
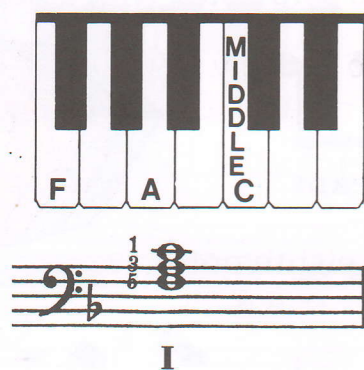
Flying Kites



Toy Soldiers



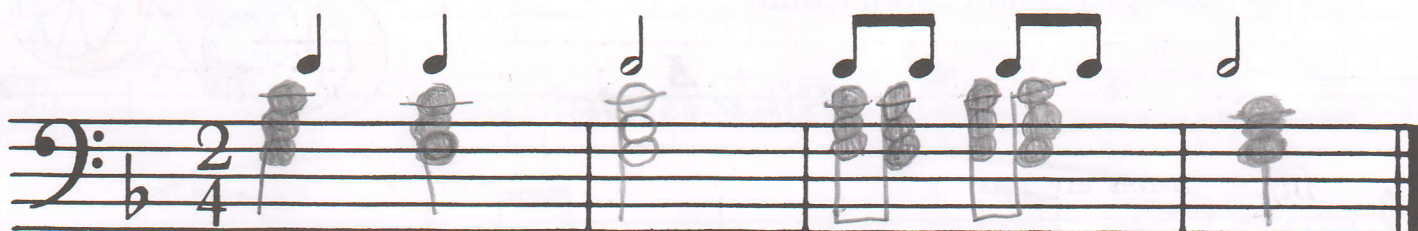
Accompaniment in F



25. Play these I and V7 chords with your L.H. Count aloud while playing.



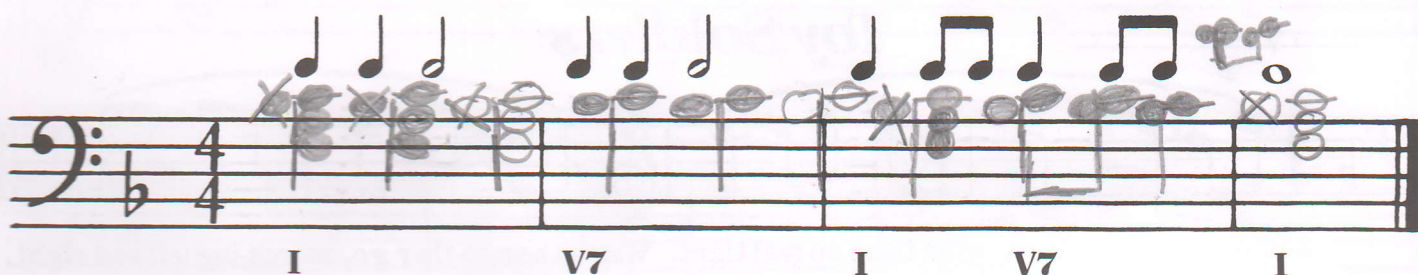
26. Draw I chords in the rhythm below. Play these chords with your L.H.



27. Draw V7 chords in the rhythm below. Play these chords with your L.H.



28. Draw I and V7 chords in the rhythm below. Play these chords with your L.H.



New Dynamics

mf

means moderately loud.
Its Italian name is *mezzo forte*.

mp

means moderately soft.
Its Italian name is *mezzo piano*.

29. Trace the first two ***mf*** signs, then draw four more.

mf *mf* *mf* *mf* *mf* *mf*

30. Trace the first two ***mp*** signs, then draw four more.

mp *mp* *mp* *mp* *mp* *mp*

31. Draw I and V7 chords in the bass clef. Play this song and count aloud.

Falling Leaves

Andante

1

mp Leaves are fall-ing ev - 'ry where, Red and yel-low, gold, and brown.

I

V7

V7

I

mf Trees are shak-ing in the wind, Leaves are float-ing down!

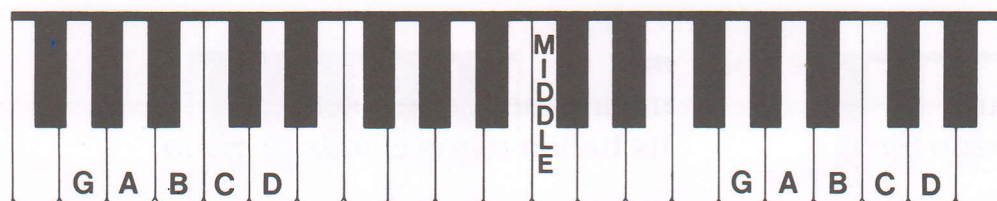
I

V7

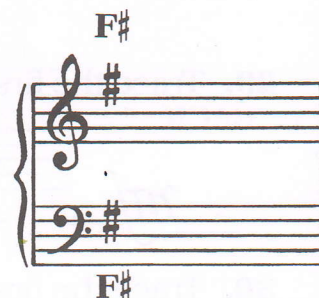
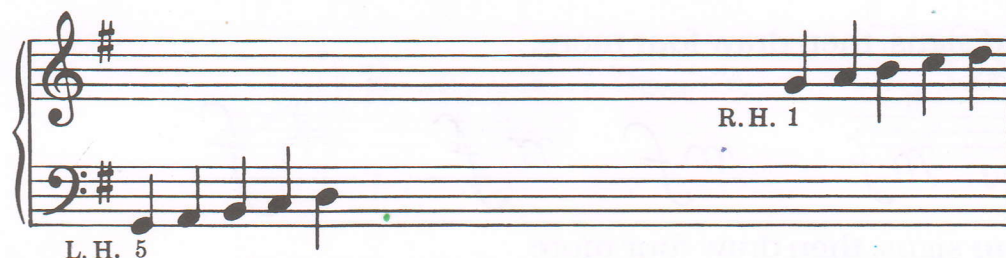
V7

I

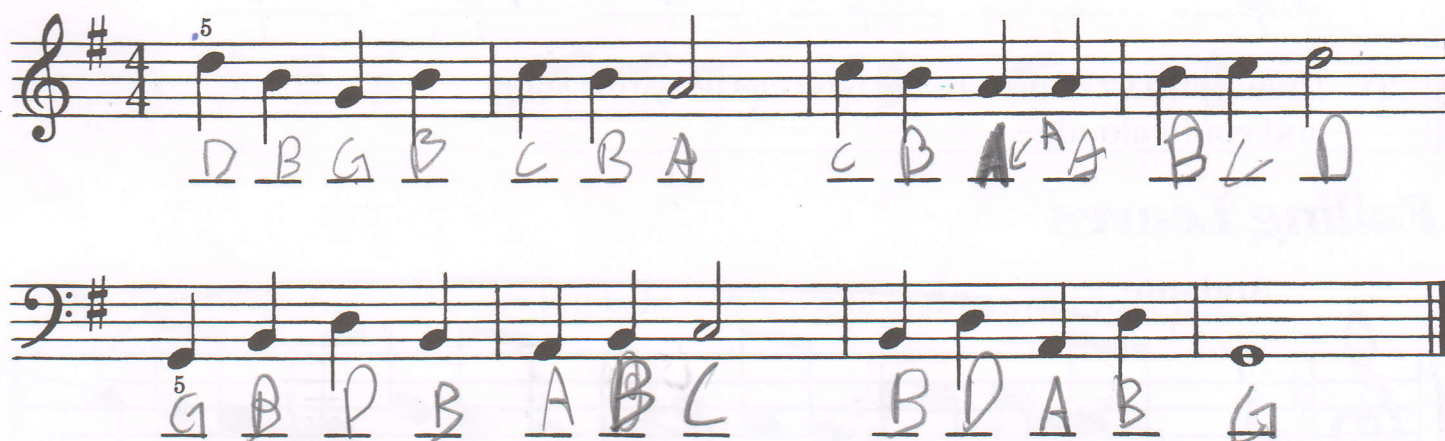
G Major Position



Key Signature
for G Major

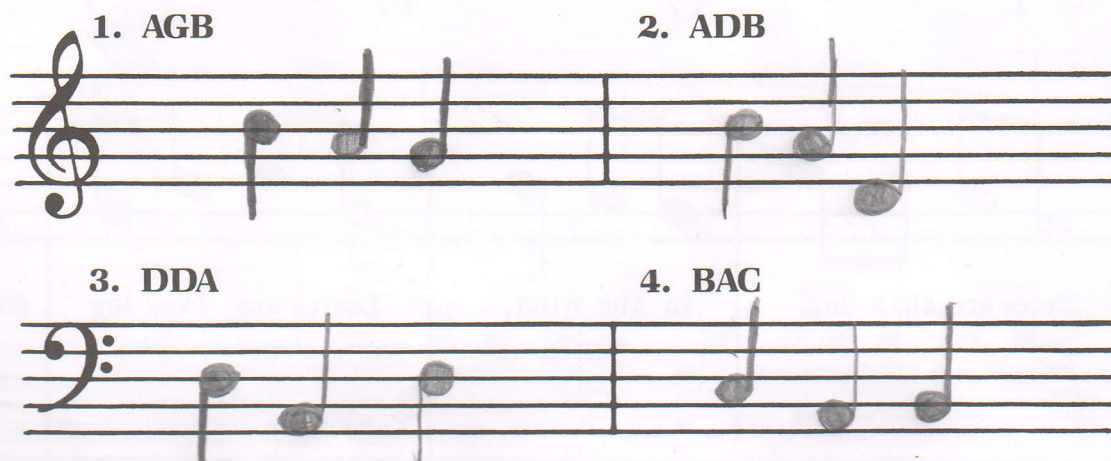


32. Write the names of these notes, then play them.



Scrambled Notes

33. Unscramble each group of letters to form a word.
Draw notes for each word in the space provided.
Use quarter, half, or whole notes.













1. BAG or GAB 2. BAD or DAB 3. DAD or ADD 4. CAB

Answers:

Matching Game

Write the correct matching answers from Column A in front of Column B. Play and name these notes on the piano.

A	B
1. BACK	<u>Beg</u> 
2. BEG	<u>Back</u> 
3. BADGE	<u>Dog</u> 
4. BANG	<u>Badge</u> 
5. GANG	<u>Gem</u> 
6. DOG	<u>Bang</u> 
7. GEM	<u>Gang</u> 
8. BAGGAGE	<u>Day</u> 
9. GADGET	<u>Baggage</u> 
10. DAY	<u>Gadget</u> 

Key Signature

The **key signature** is the sharps or flats at the beginning of each staff.



You have played in three keys so far:

C Major

No sharps or flats



F Major

One flat



G Major

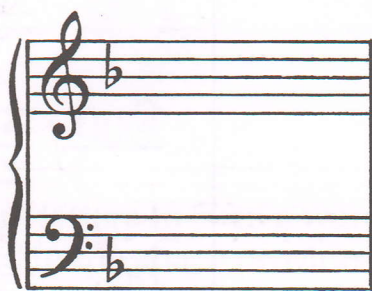
One sharp



34. Write the names of these key signatures.



G Major



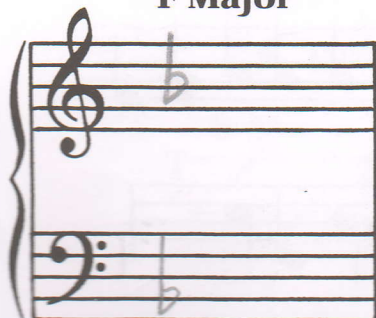
F Major



C Major

35. Draw these key signatures in both clefs.

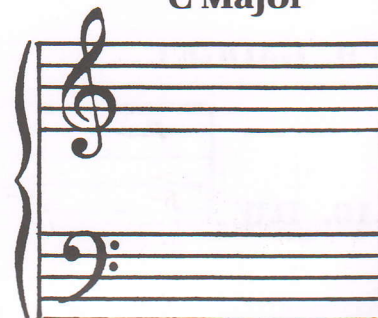
F Major



G Major



C Major



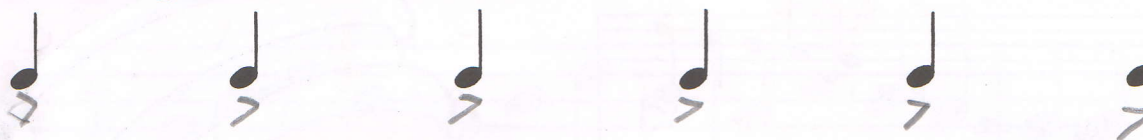
Accent Sign >

An **accent sign** means to play the note or notes louder.

36. Draw > signs **over** these notes.



37. Draw > signs **under** these notes.



38. Write the name of the key signature for each line.
Play these melodies and accent the notes with an > sign.

Key of G Major



Key of C Major

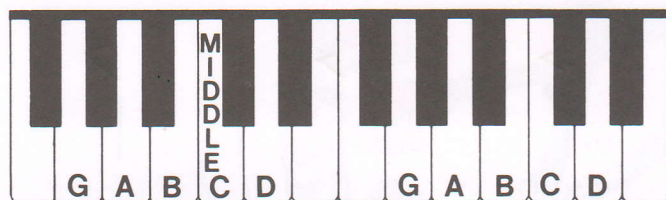


Key of F Major



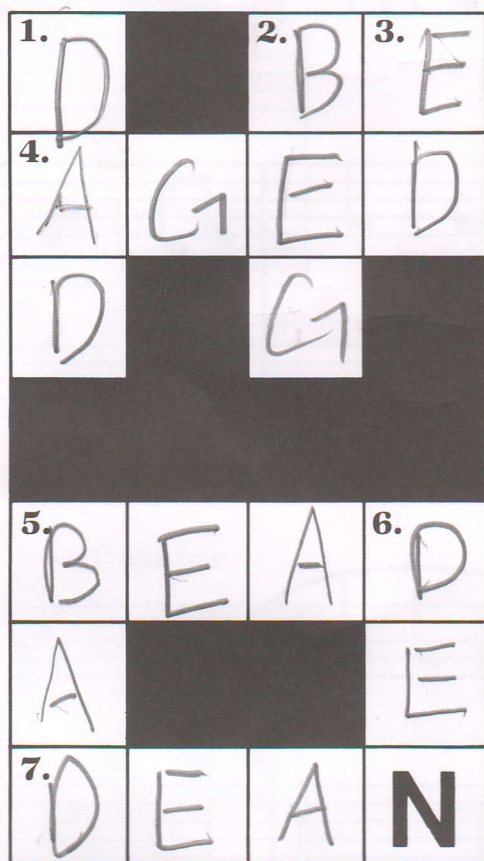
G Major Position

New L.H.
position

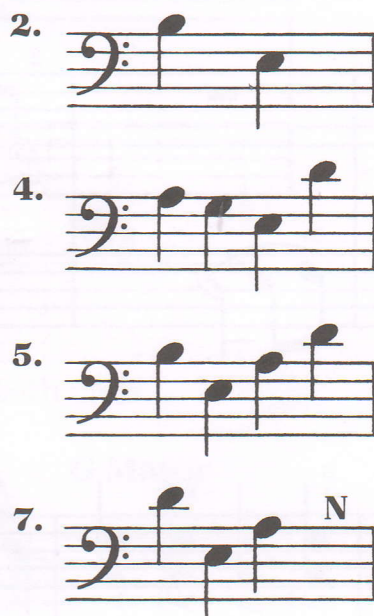


Note Puzzle

Write the names of the notes in the puzzle to spell words.



Across



Down

