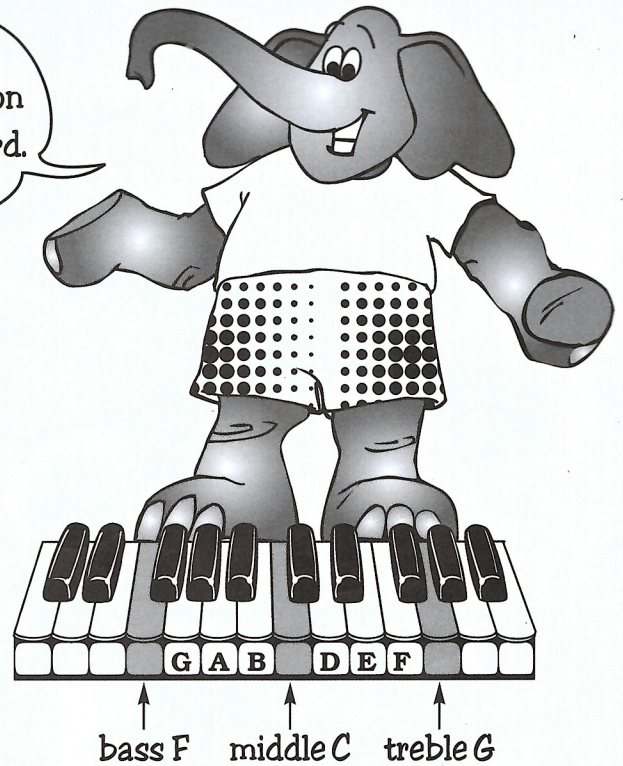
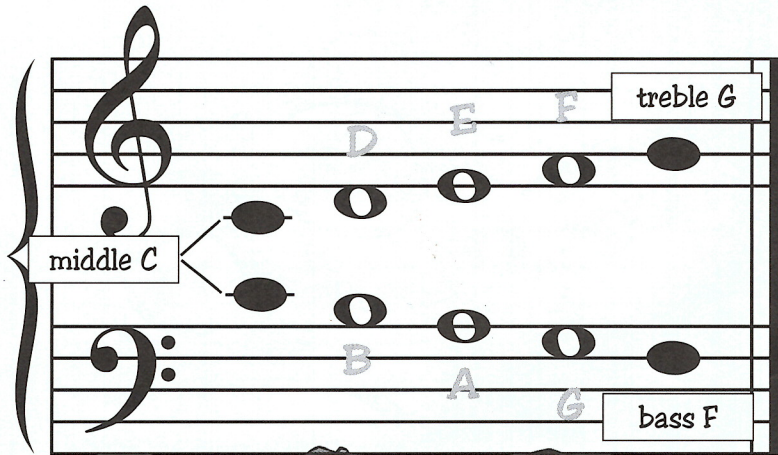


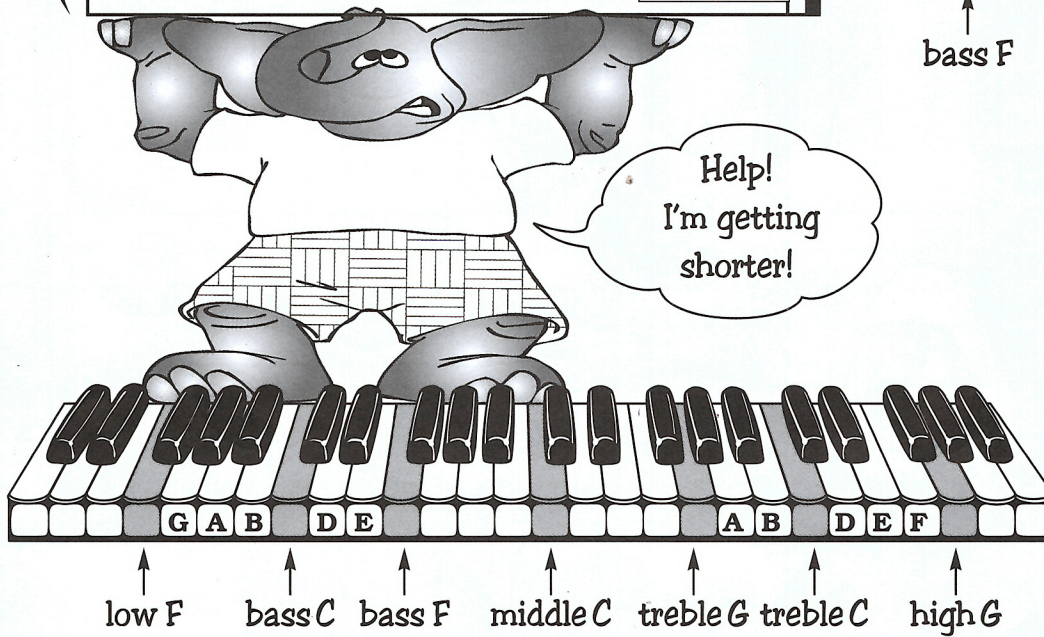


UNIT 13: NOTES BETWEEN THE GUIDEPOSTS

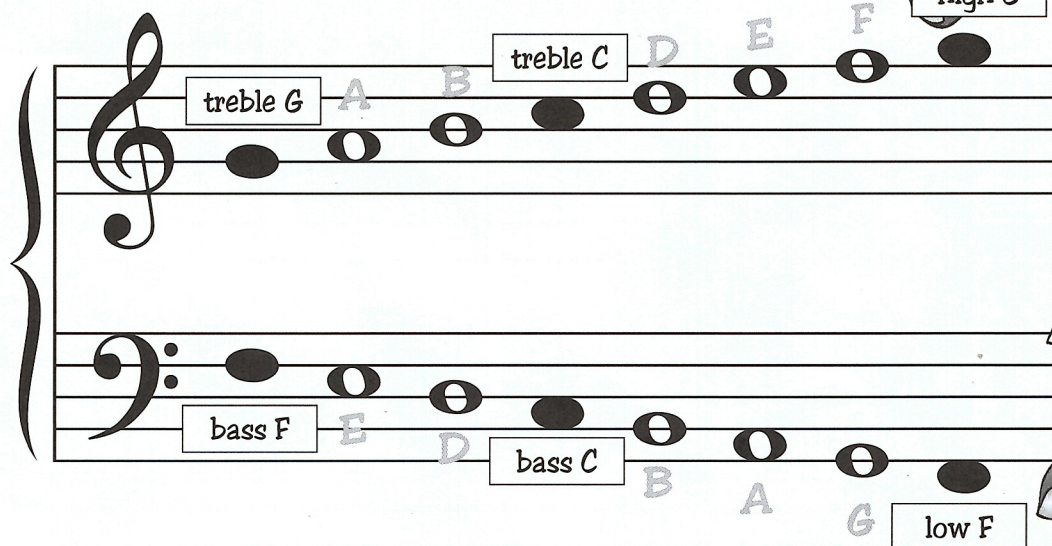
Here are the notes between these guideposts on the grand staff and keyboard.



Help!
I'm getting
shorter!



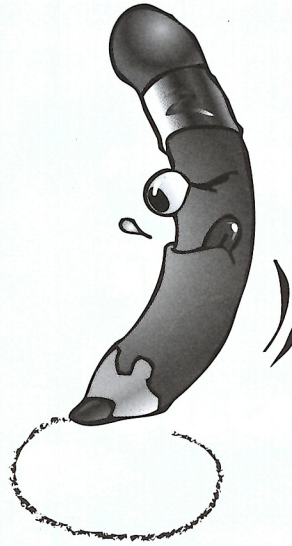
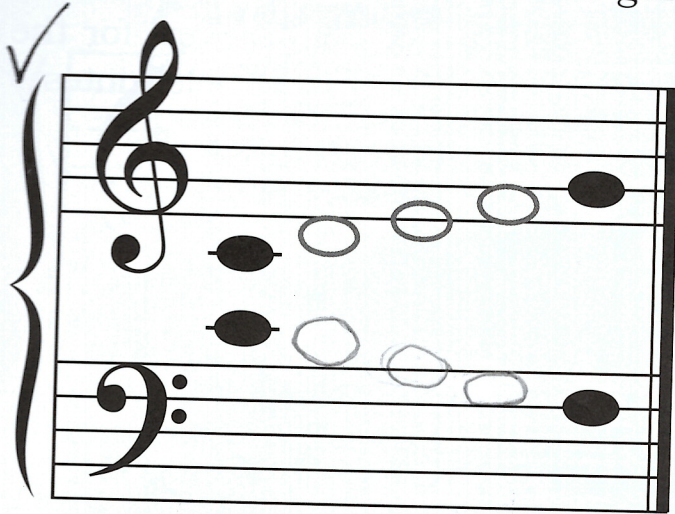
Hey! I'm
getting taller!



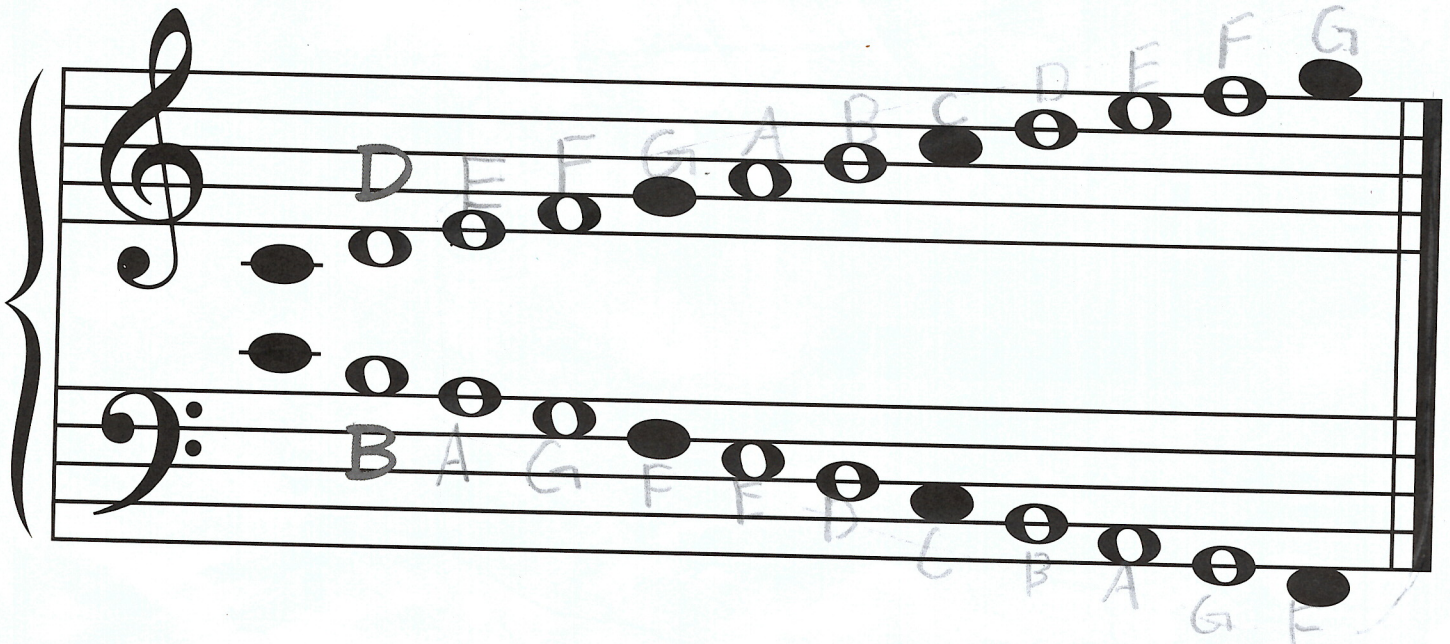
DRAWING AND NAMING

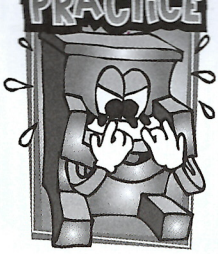


1. Draw the notes between the guideposts.



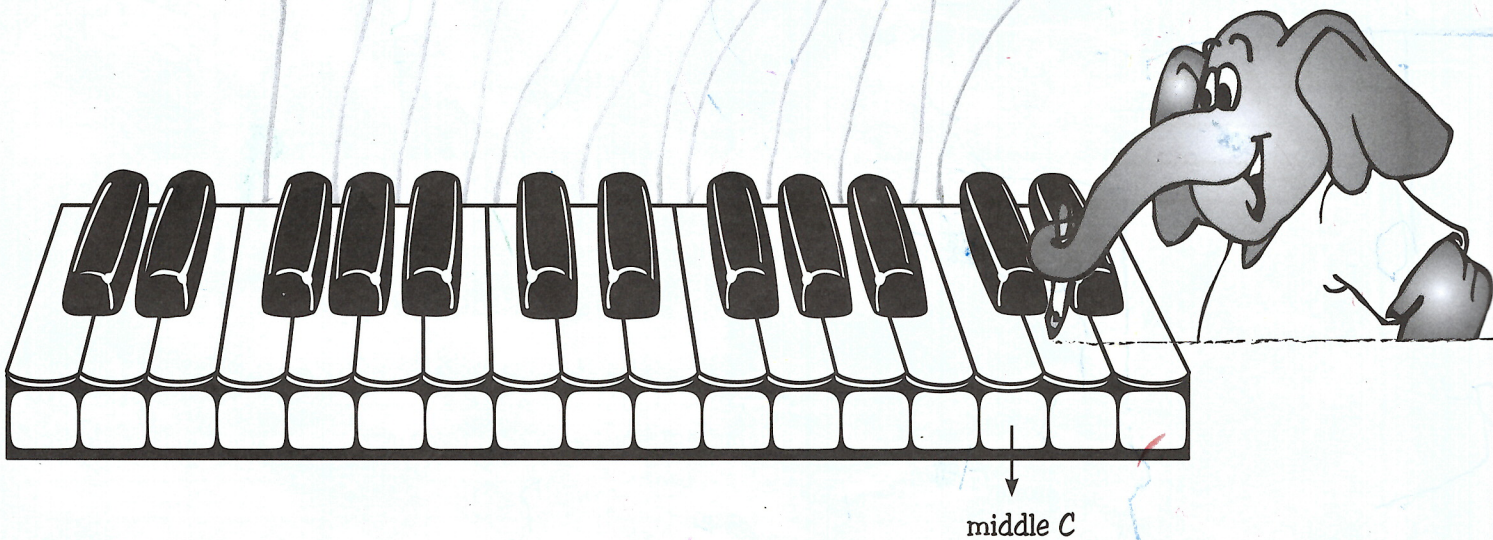
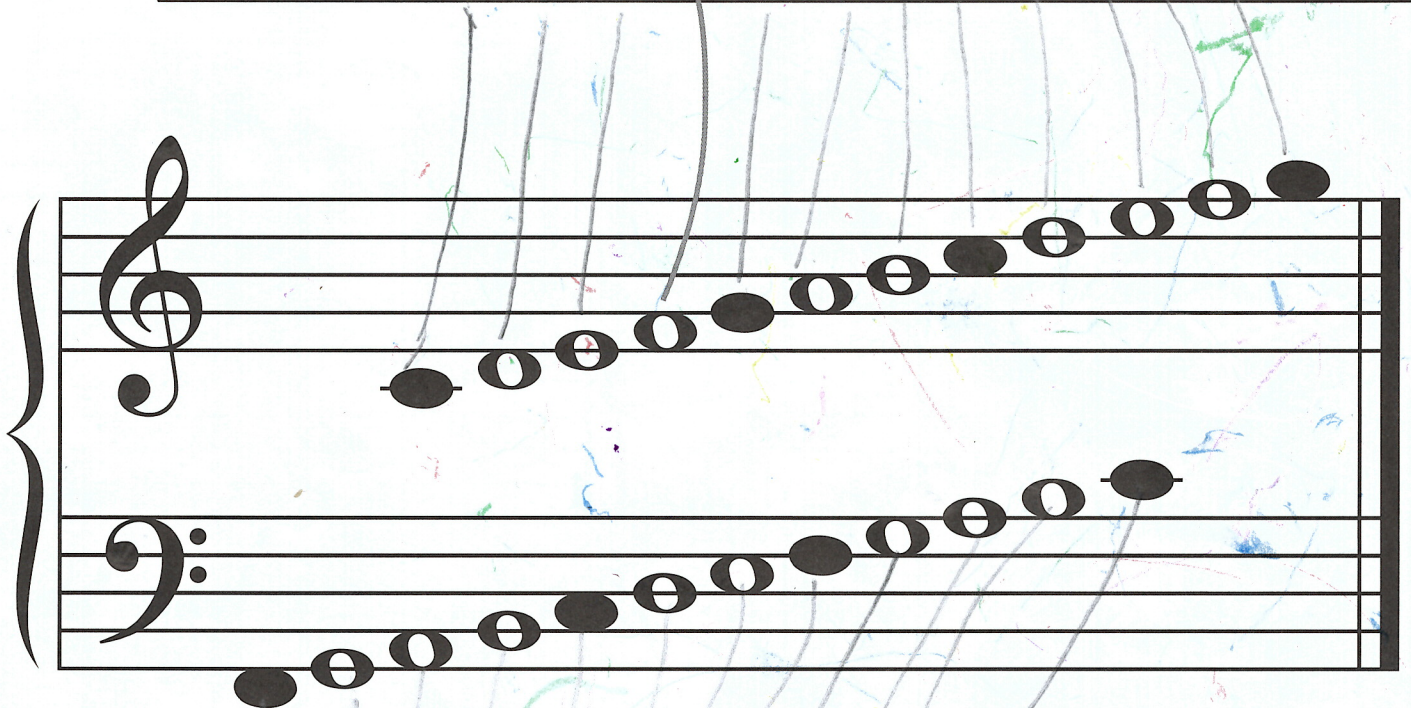
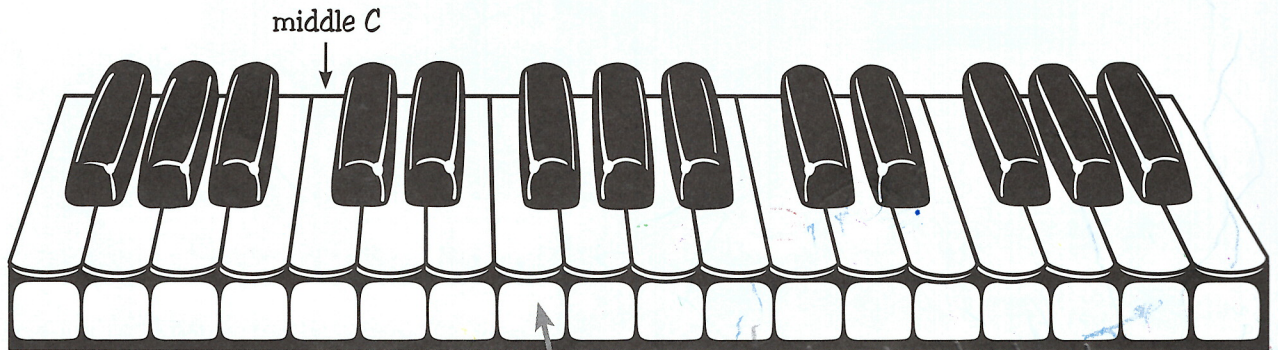
2. Name the notes between the guideposts.





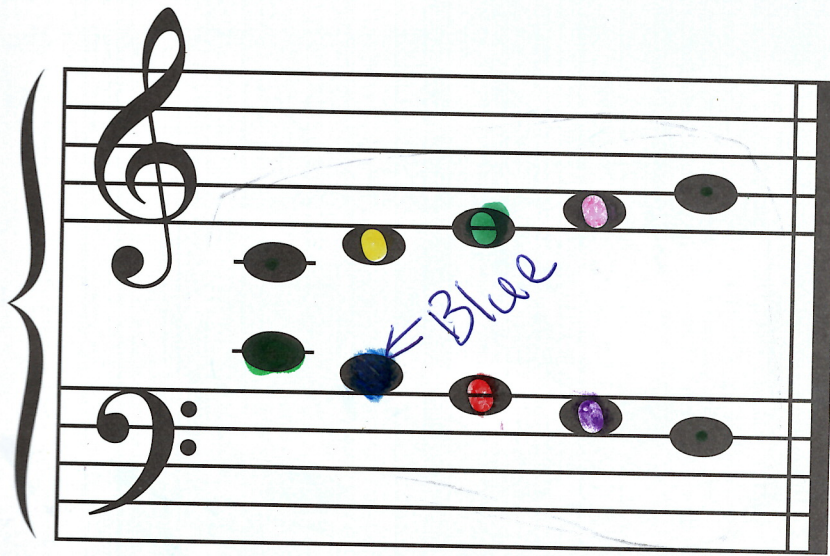
MATCHING

Draw a line from the notes between the guideposts on the staff to the matching keys on the keyboard. Use the top keyboard for the treble clef notes and the bottom keyboard for the bass clef notes.



OUT OF ORDER

Color the notes on this page according to the color key.



Color Key:

D's yellow.

B's blue.

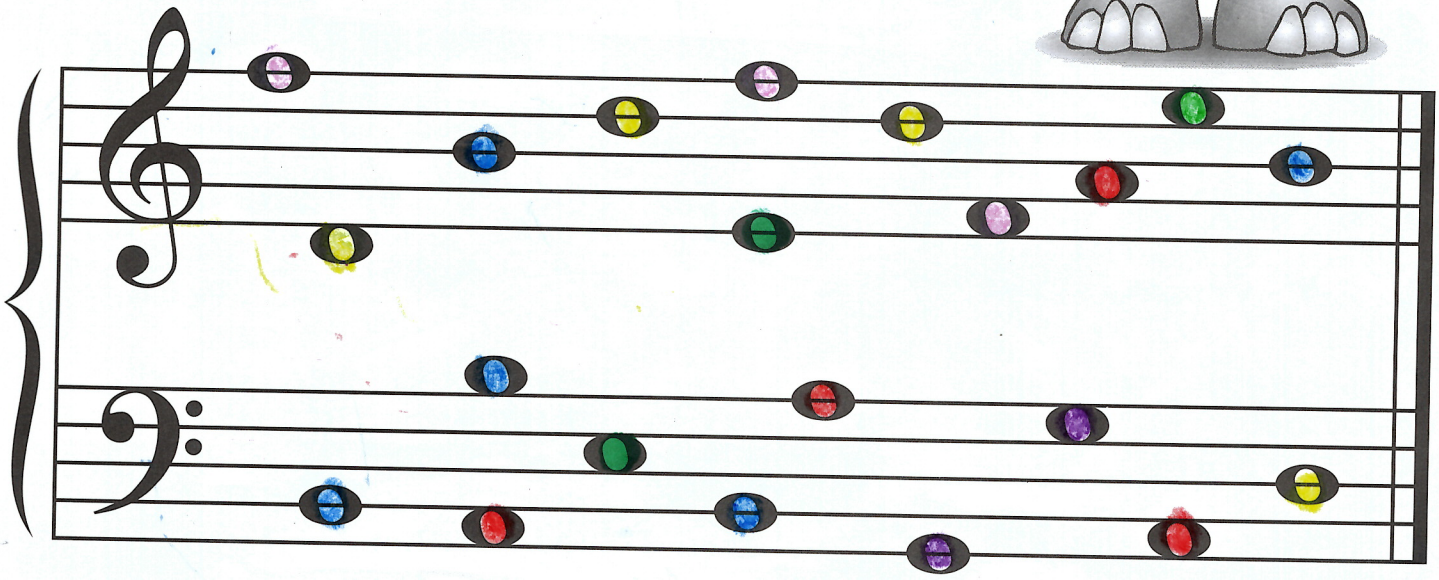
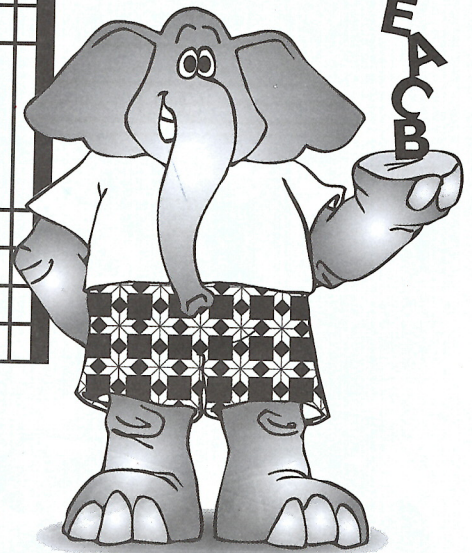
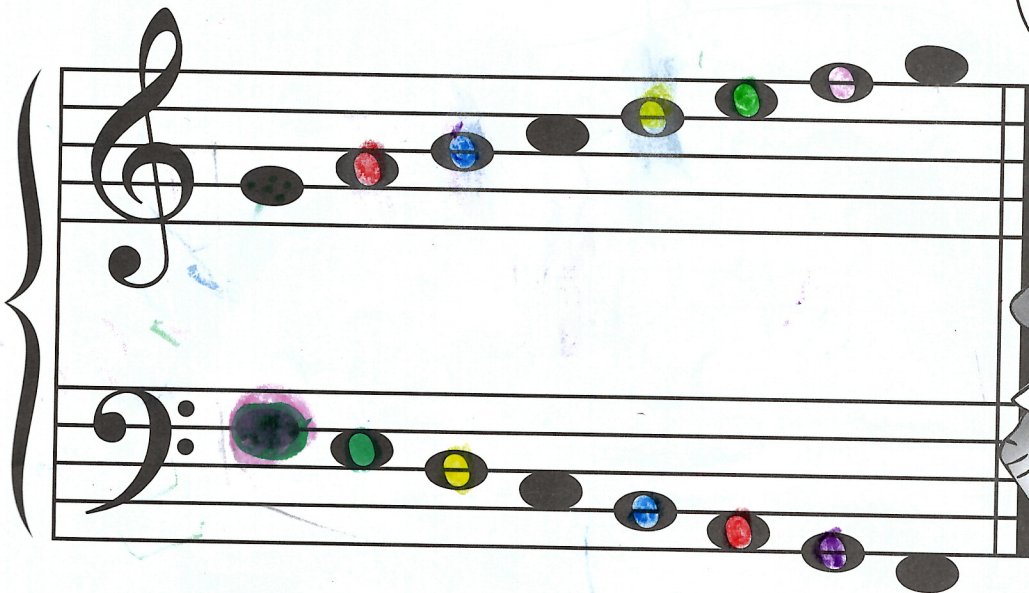
A's red.

E's green.

G's purple.

F's pink.

Look below.
Can you find and
color the
notes when they
are not in order?



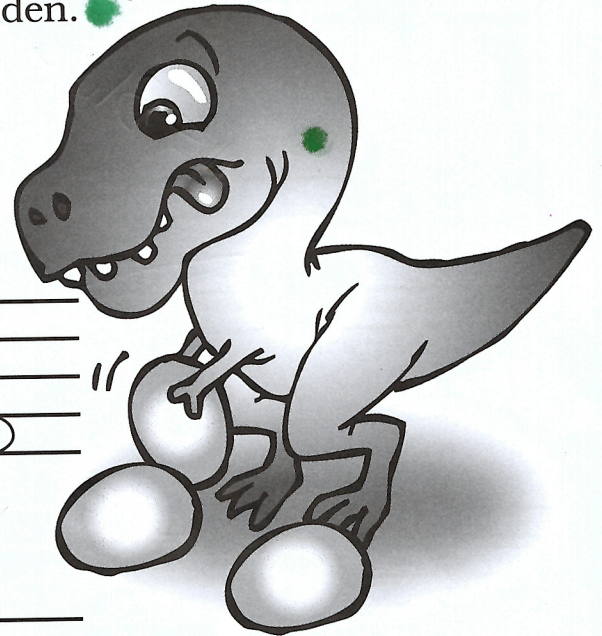
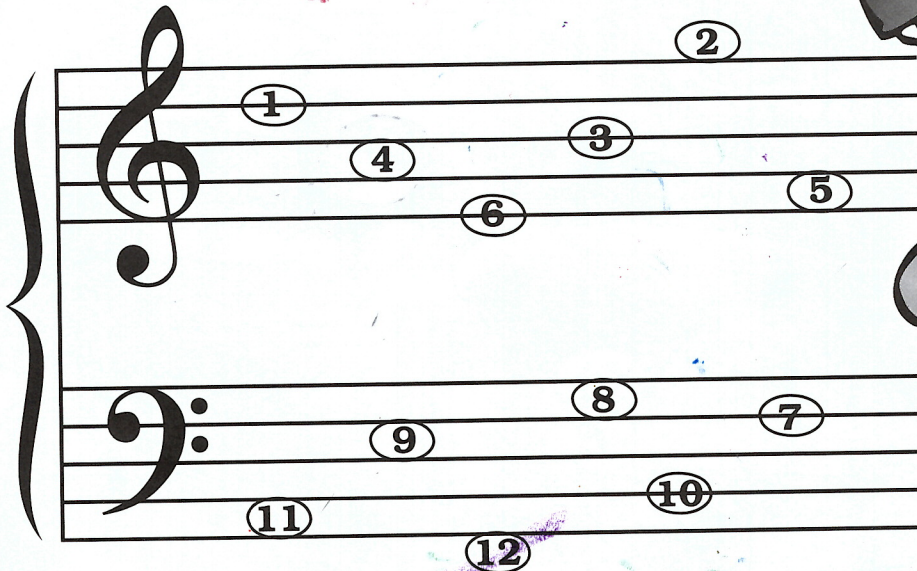


BABY DINOSAURS

This dinosaur has hidden her eggs all over the grand staff.

When they hatch, the baby dinosaurs will need to be named.

Choose a name for each that begins with the letter
name of the line or space where the egg is hidden.



Names:

1. Diego
2. ~~Flagka~~ Gavin
3. Banga
4. Angelina
5. Fangara
6. Edger

7. Flgelina
8. Garia
9. Enga
10. Bangaya
11. Angie
12. ~~Gangya~~ Flame