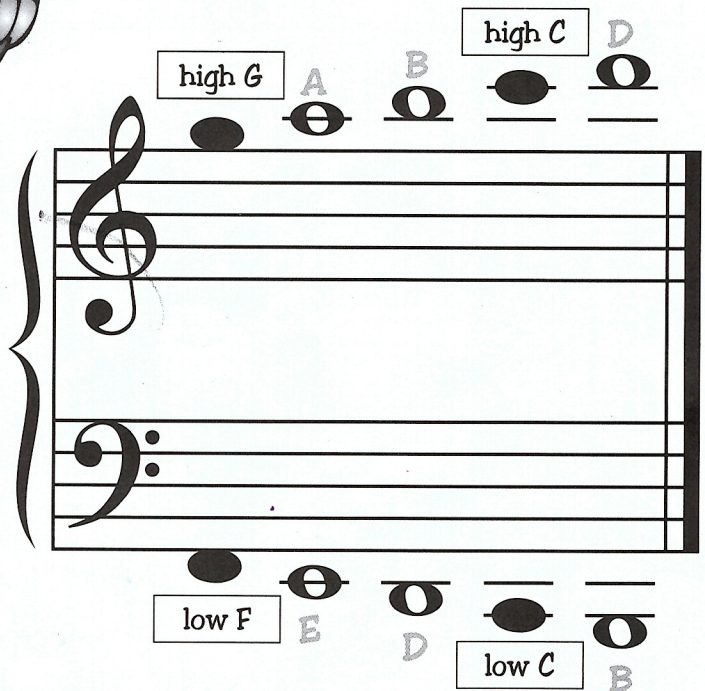
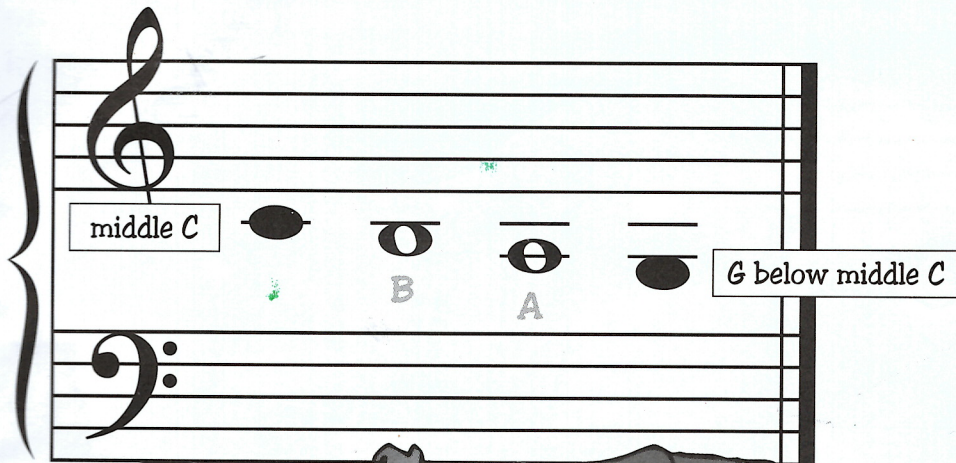
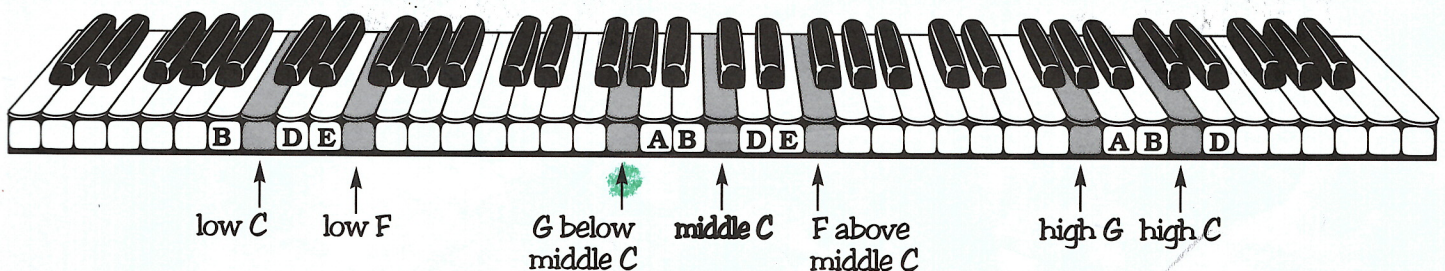


UNIT 14: LEDGER LINE NOTES

Here are some ledger line notes *between* and *around* guideposts on the staff...



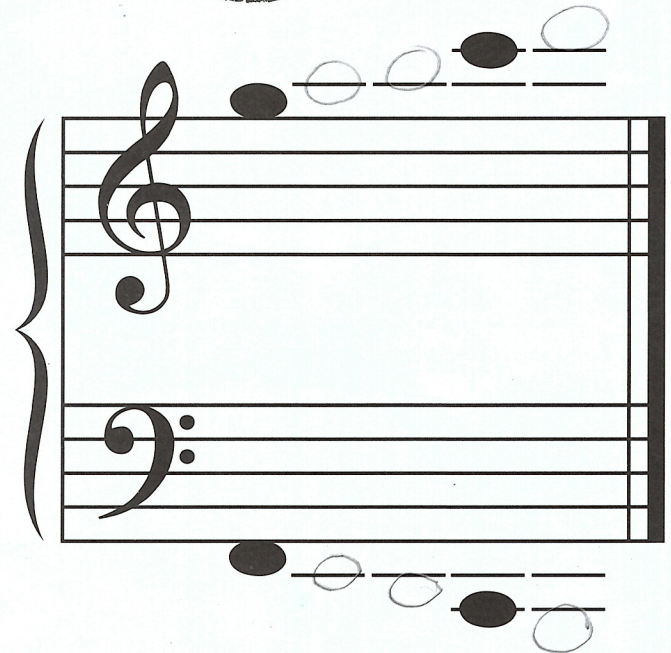
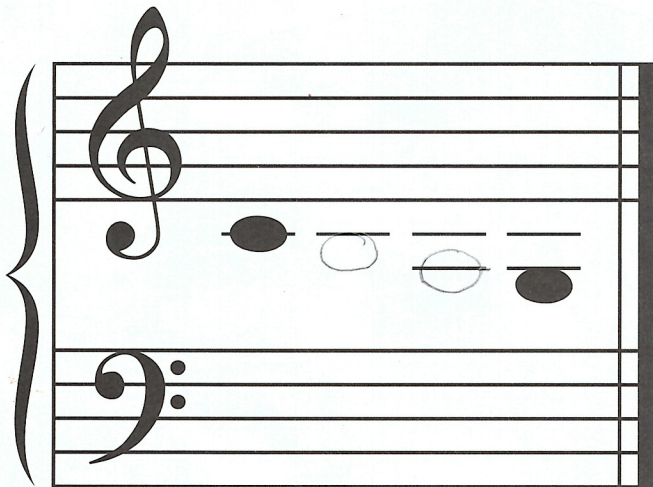
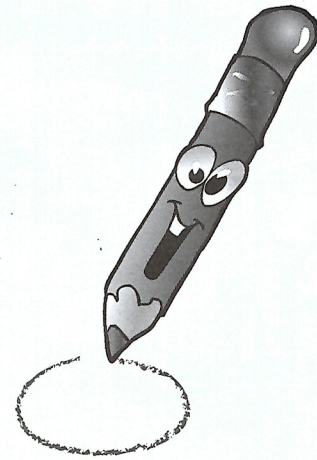
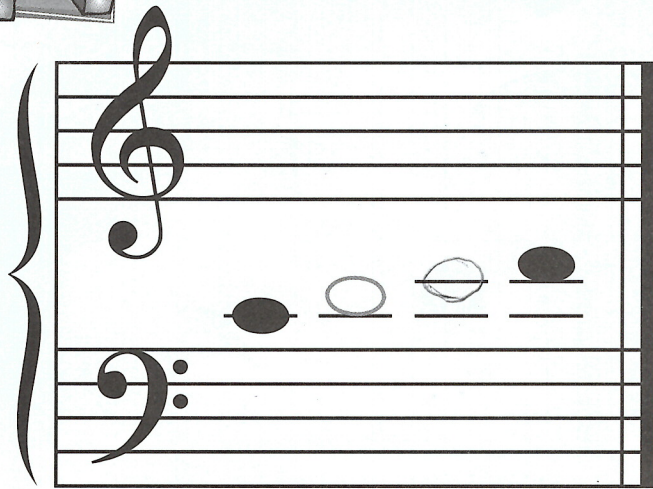
...and on the keyboard.



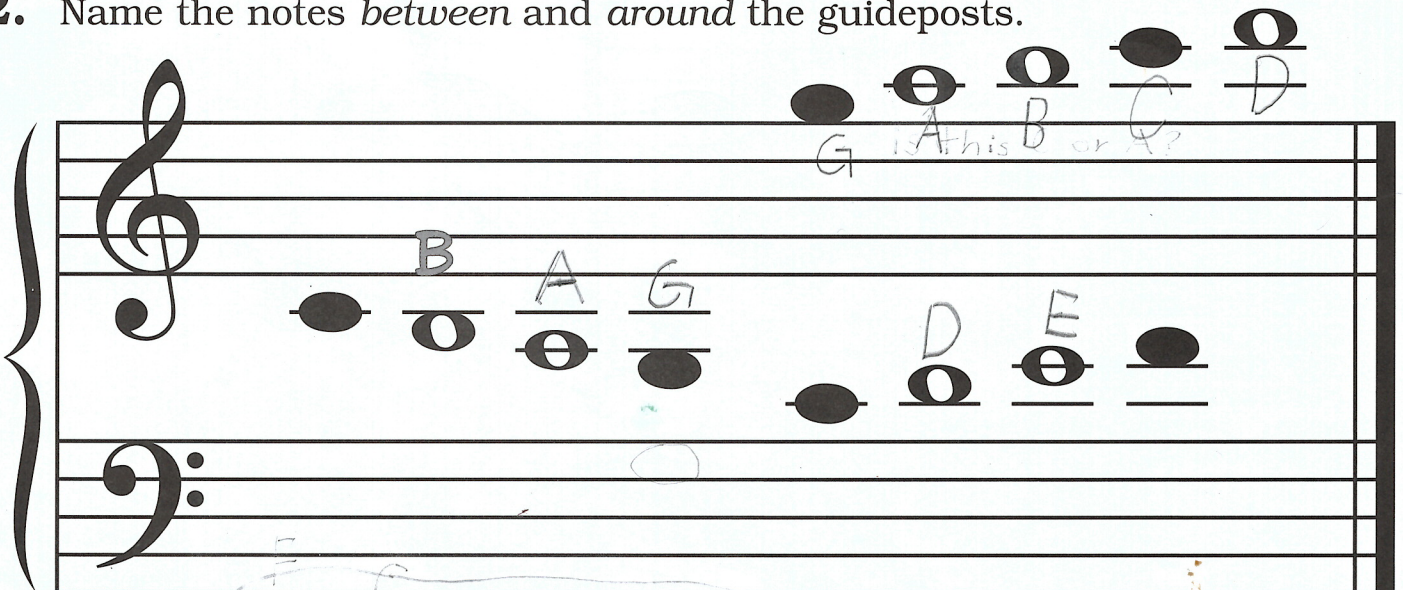


DRAWING AND NAMING

1. Draw the ledger line notes *between* and *around* the guideposts.



2. Name the notes *between* and *around* the guideposts.



MATCHING



Draw lines from the notes *between* and *around* the guideposts on the staff to the matching keys on the keyboard. Use the top keyboard for the treble clef notes, and the bottom keyboard for bass clef notes.

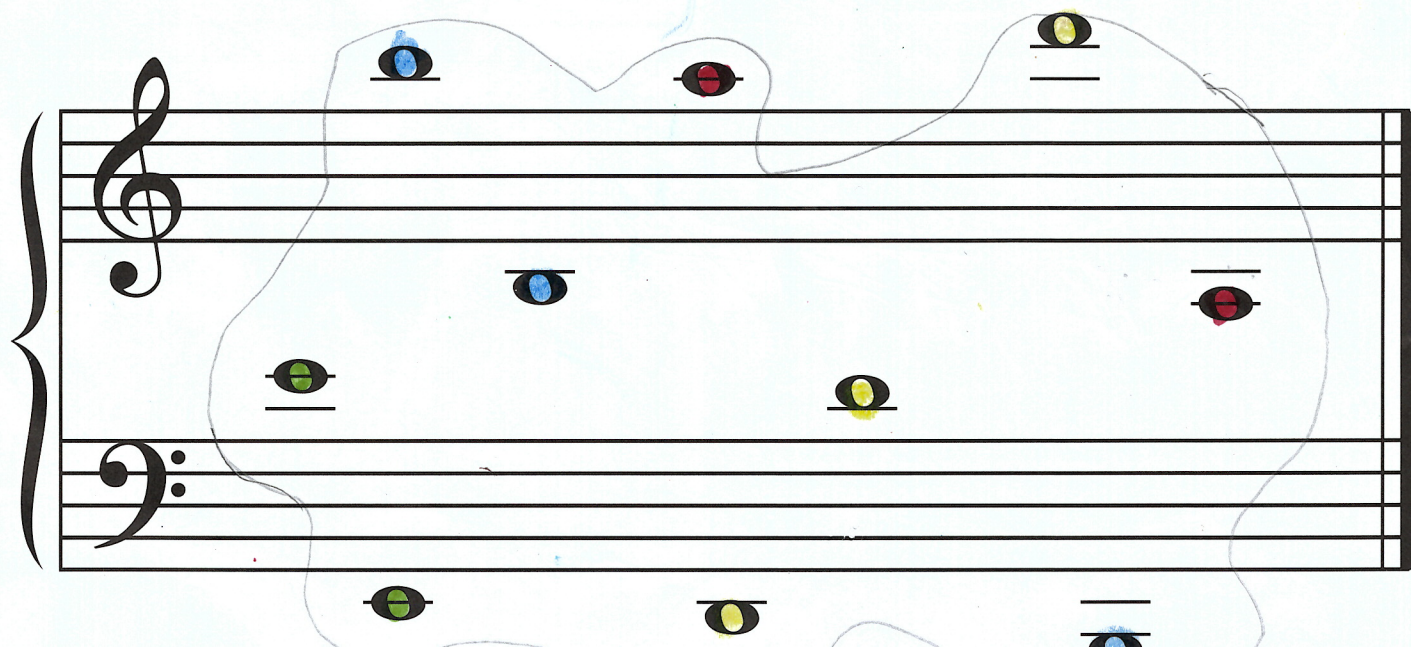
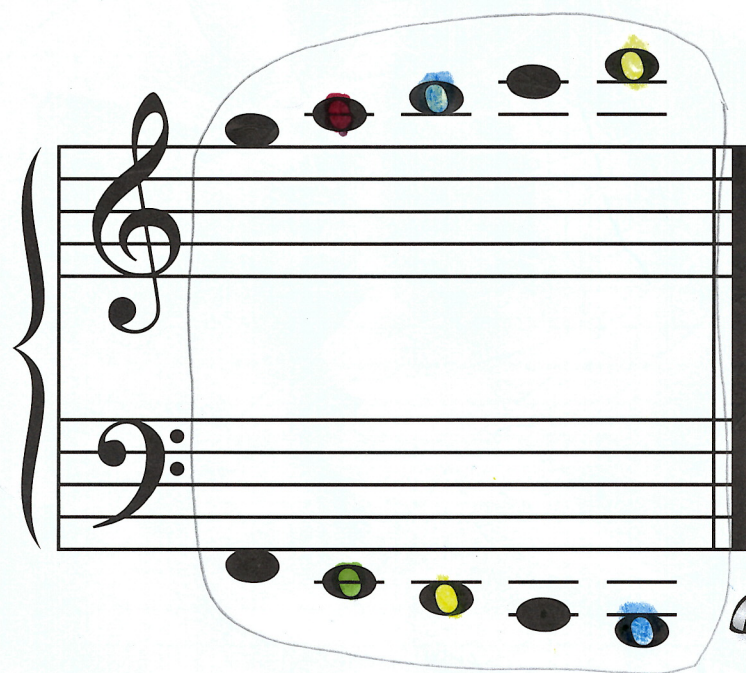
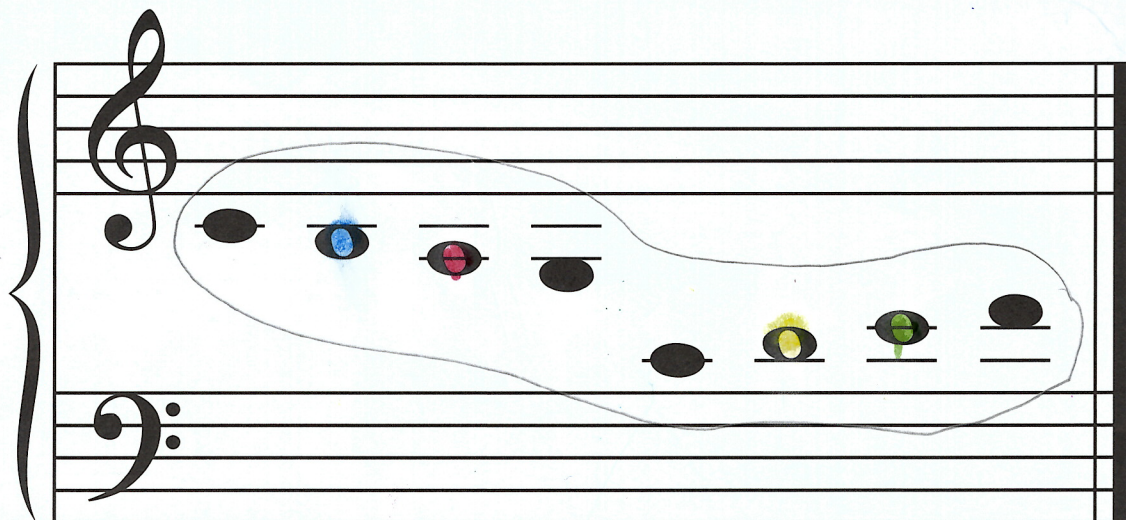
The image shows a musical matching exercise. At the top is a keyboard with an arrow pointing to the fourth white key from the left, labeled "middle C". Below this is a piano staff with a treble clef and a bass clef. The treble clef staff contains five notes: a half note on the first line (F4), a quarter note on the second space (G4), a quarter note on the second line (F4), a quarter note on the first space (E4), and a half note on the first line (D4). The bass clef staff contains five notes: a half note on the first line (F3), a quarter note on the second space (G3), a quarter note on the second line (F3), a quarter note on the first space (E3), and a half note on the first line (D3). At the bottom is another keyboard with an arrow pointing to the fourth white key from the right, labeled "middle C". Handwritten lines connect the notes on the staff to the corresponding keys on the keyboards. The treble clef notes are connected to the top keyboard, and the bass clef notes are connected to the bottom keyboard. The lines are drawn in a way that shows the matching process, with some lines crossing and some notes being circled.



COLORING MIX-UP

Color the notes on this page according to the color key.

Color Key:
D's yellow.
B's blue.
A's red.
E's green.

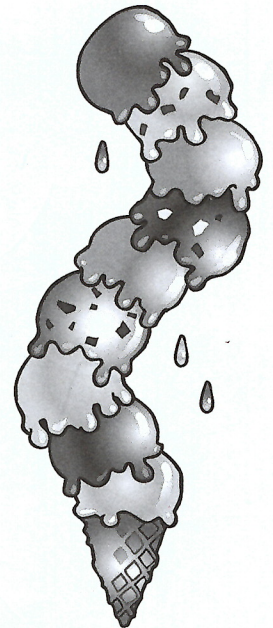
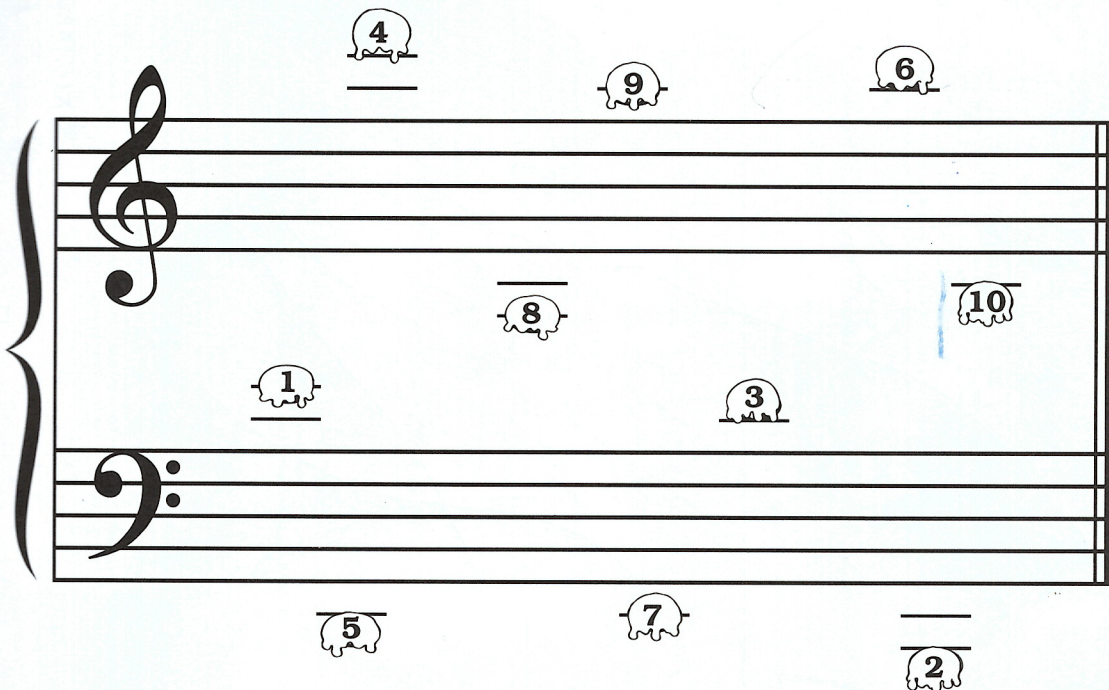




ICE CREAM FAVORITES



This ice cream cone was even taller before the sun came out and started to melt the scoops! They slid right off the ice cream cone and onto the staff below. Choose a flavor name for each scoop that begins with the letter name of the line or space where it sits.



Names:

1. Eggnog

2. Banana

3. Dango

4. Dana

5. Danama

6. Bgghacha

7. Eggam

8. Anag

9. Anagar

10. Bango

What's your favorite flavor? Vanilla