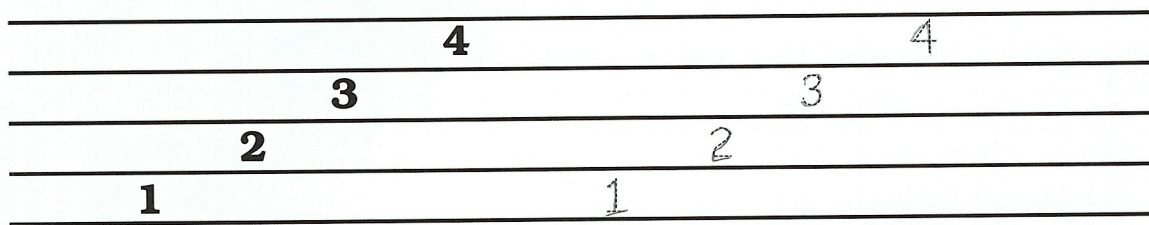


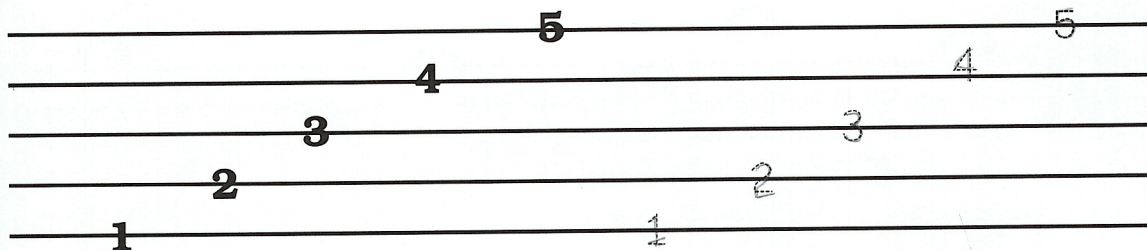
# LINES AND SPACES



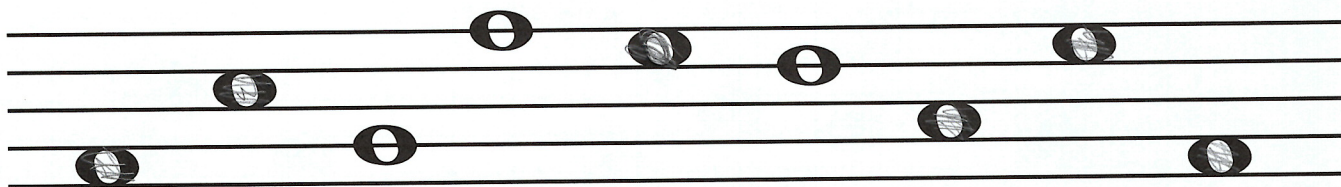
1. Trace the numbers of the spaces.



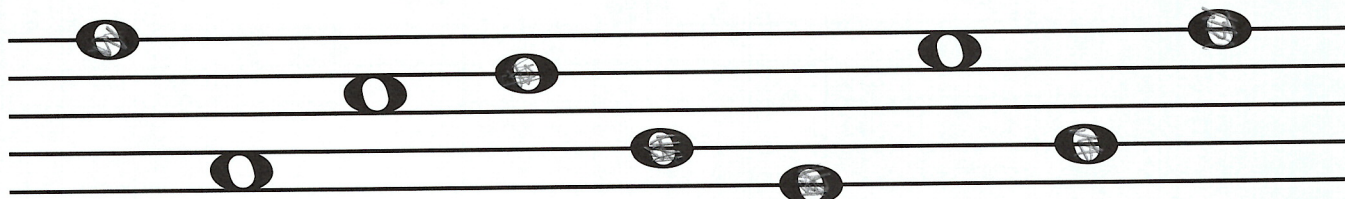
2. Trace the numbers of the lines.



3. Color only the space notes.



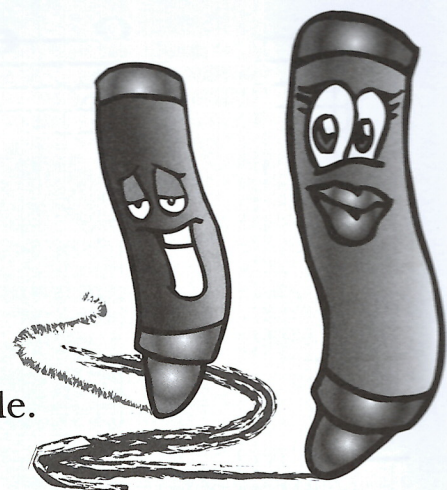
4. Color only the line notes.



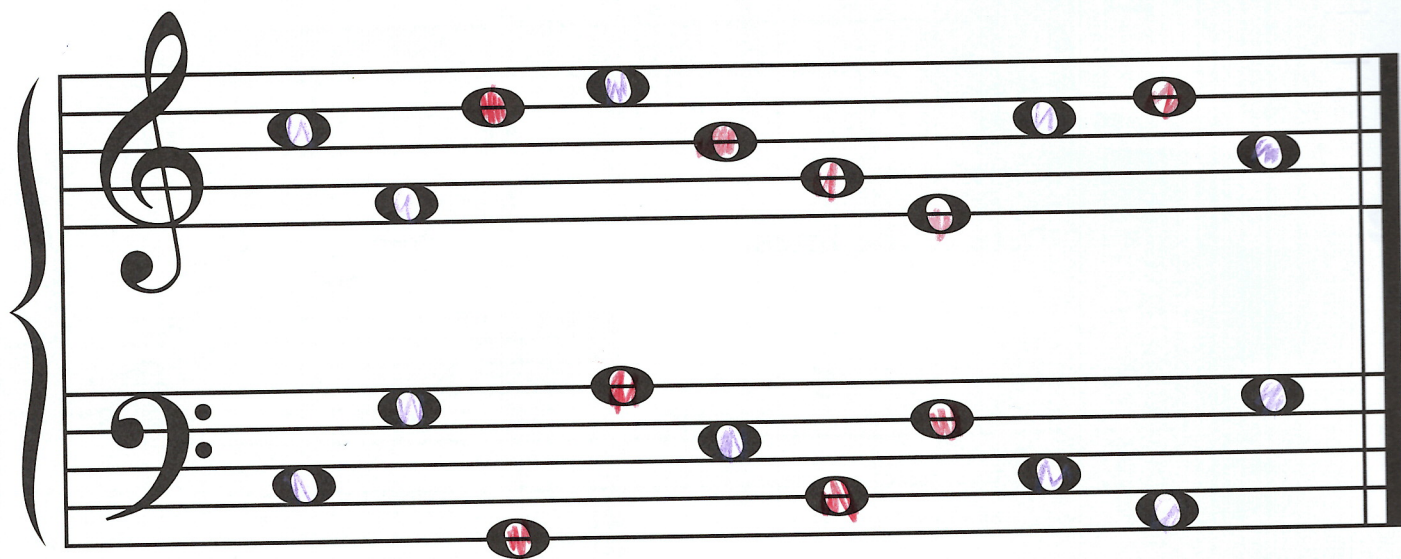




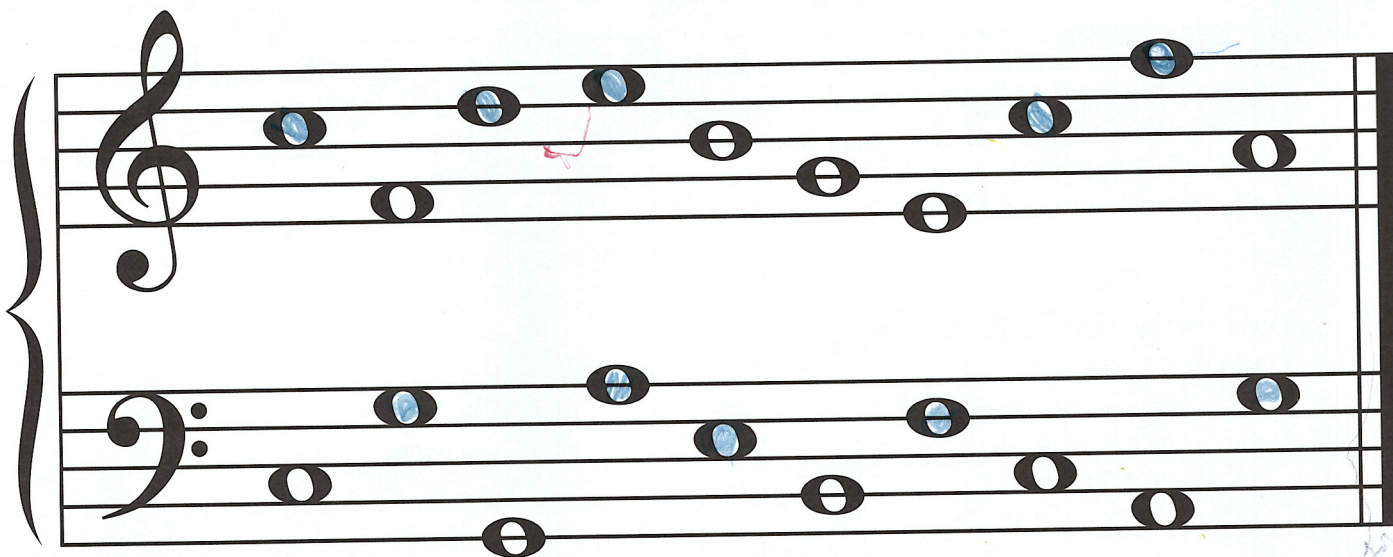
# NOTES ON THE STAFF



1. Color the line notes red and the space notes purple.



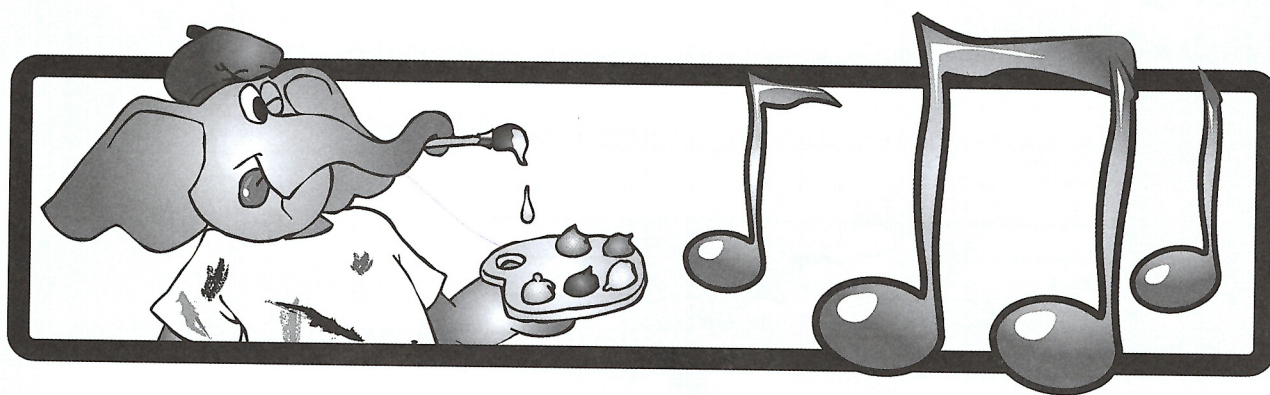
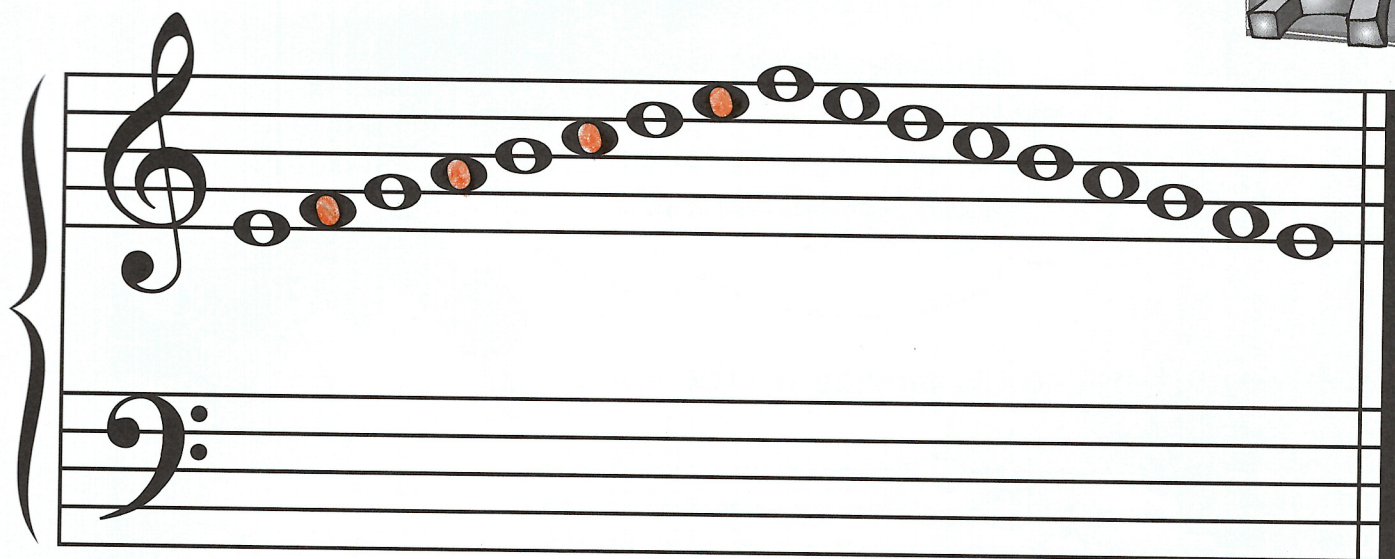
2. Color the two highest notes blue and the two lowest notes yellow.



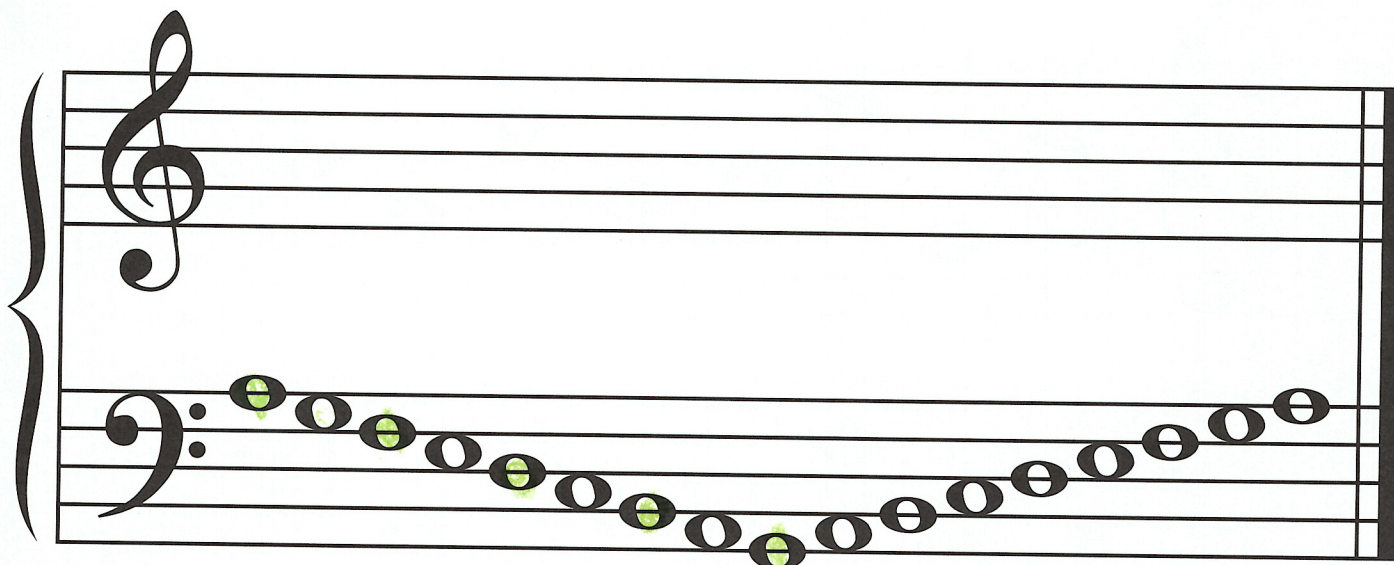




3. Color the space notes moving up the grand staff orange.



4. Color the line notes moving down the grand staff green.





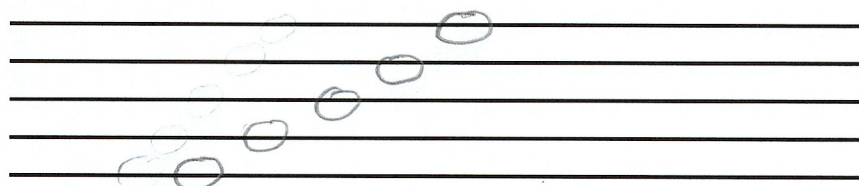


# UP AND DOWN ON THE STAFF

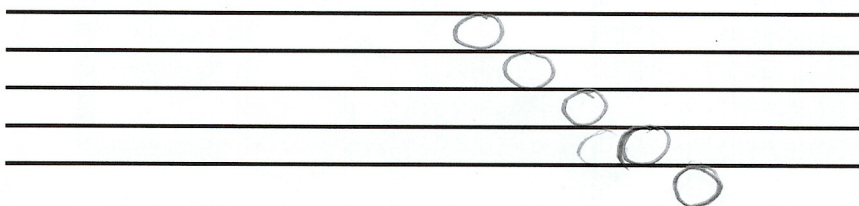
Line notes are placed so the line runs through the middle of the note. Space notes are placed between two lines.



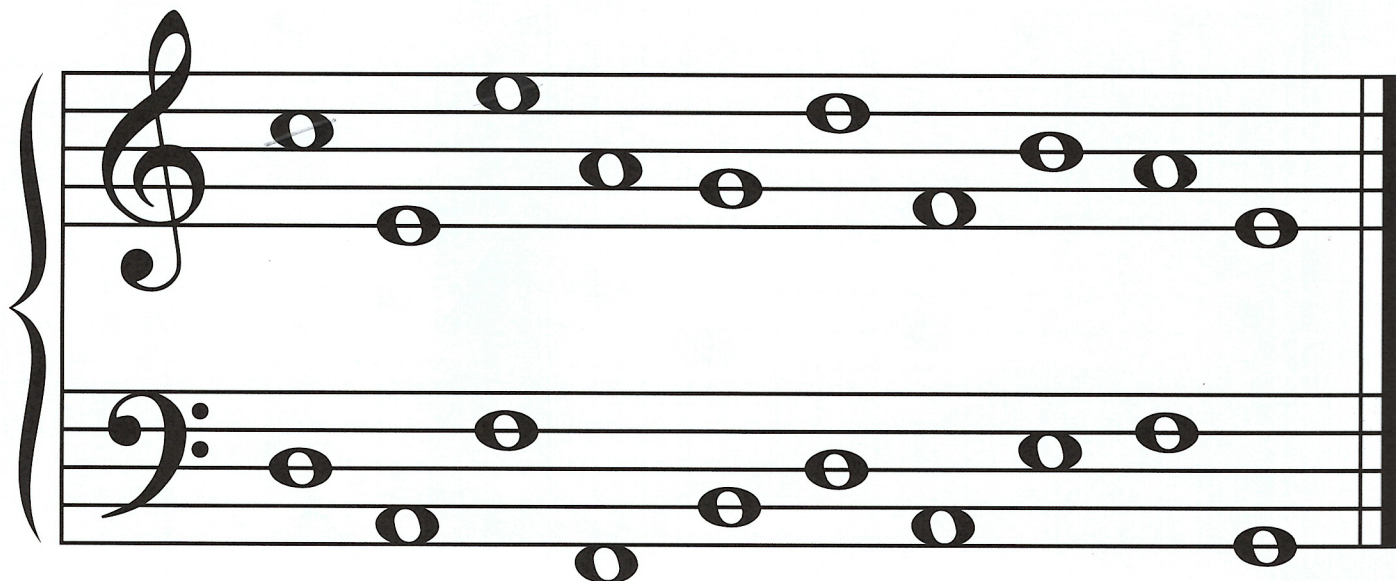
1. Draw five line notes moving up the staff.



2. Draw four space notes moving down the staff.



3. Circle the two lowest line notes and cross out the two highest space notes.



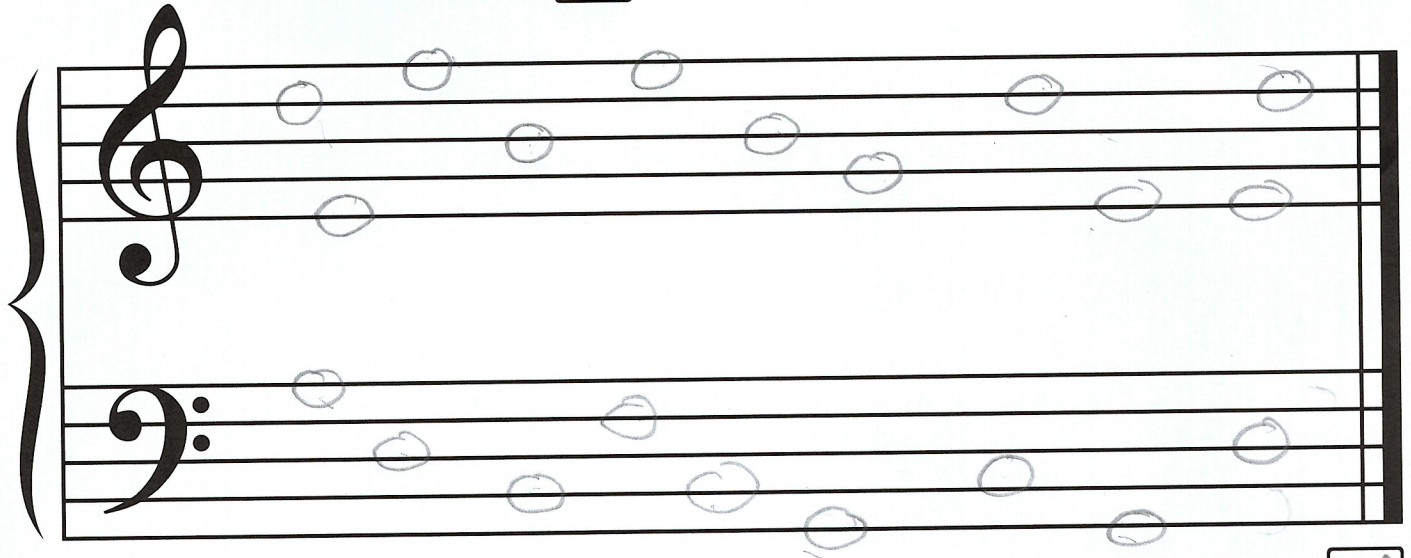


# THAT'S A LOT OF NOTES!

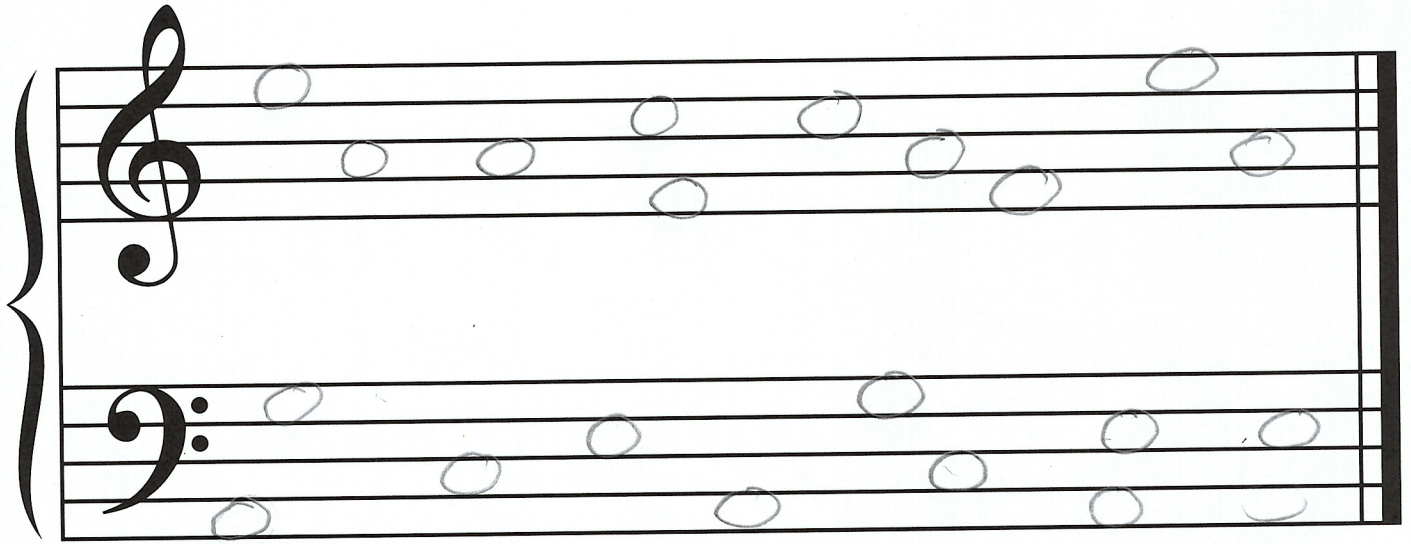


1. Draw all the line notes on the grand staff.

How many notes are there?



2. Draw all the space notes on the grand staff. How many notes are there?



3. Draw all the notes on the grand staff. How many notes are there?

