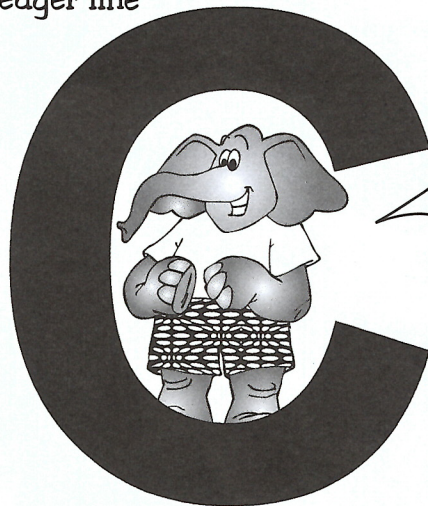


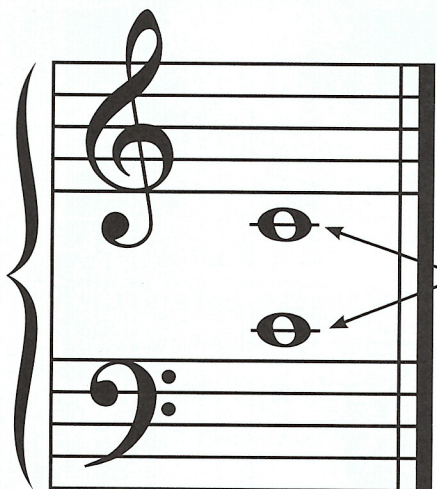
UNIT 7: GUIDEPOSTS - THE FIVE C'S



ledger line



There is a note in the middle of the grand staff. It has one extra line through it. This line is called a **ledger line**. The name of this note is **middle C**.

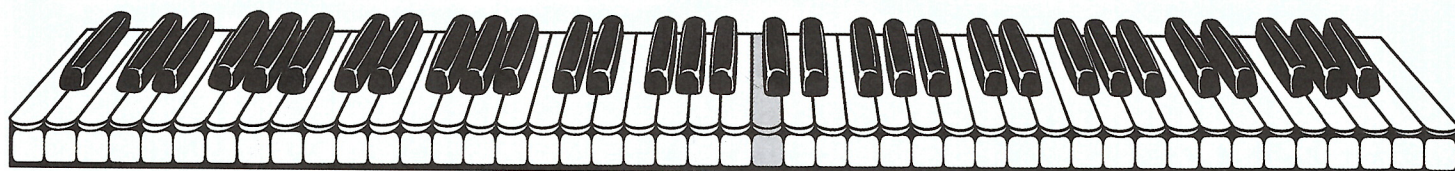


middle C



Middle C for the right hand is placed close to the treble staff. Middle C for the left hand is placed close to the bass staff.

Middle C is in the *middle* of the keyboard.



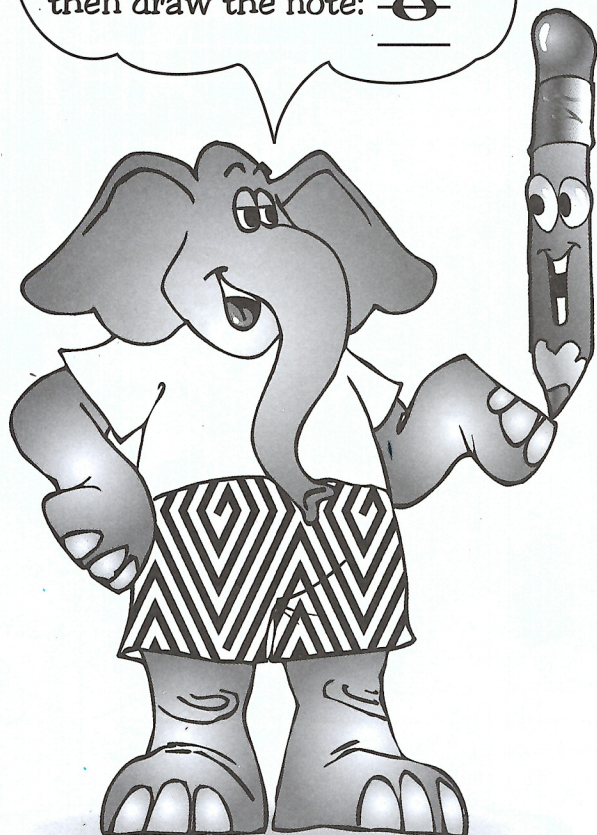
↑
middle C

CAN YOU C?



When you draw
a note with ledger lines,
draw the ledger
lines first, _____
lines first, _____

then draw the note: _____



1. Draw the guidepost **C**'s next to their names on the staff below.

high C _____

treble C _____

middle C _____

bass C _____

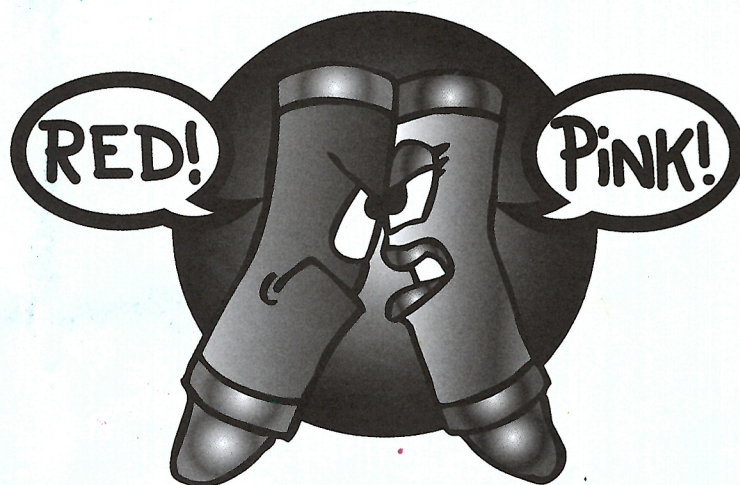
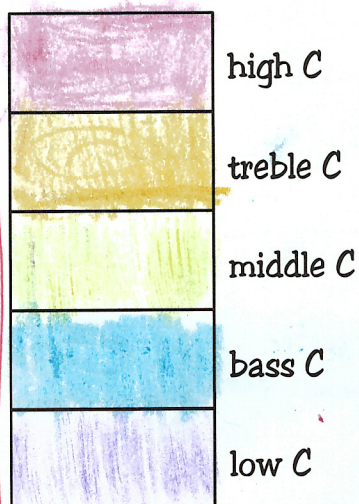
low C _____

2. Circle all the guidepost **C**'s on the staff below: low C, bass C, middle C, treble C, and high C.



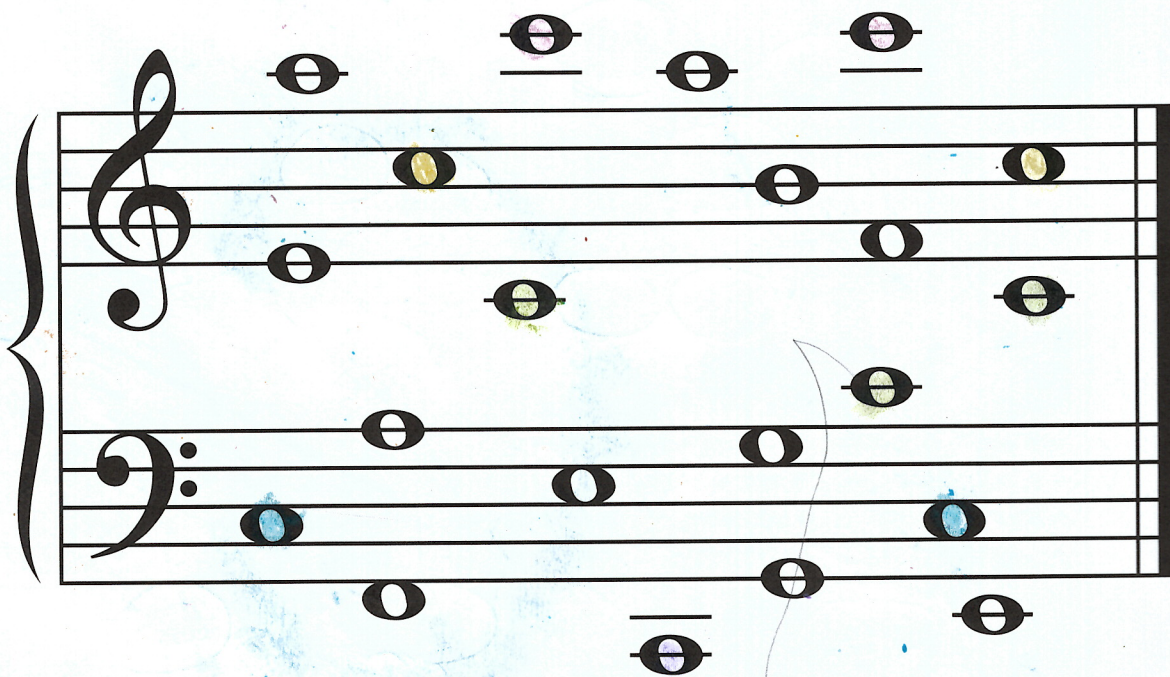
C-ING RED

1. Create your own color key by coloring each box a different color.



Middle C

2. Using the colors you chose for your color key, color all the **C**'s on the grand staff and all the **C**'s on the keyboard.

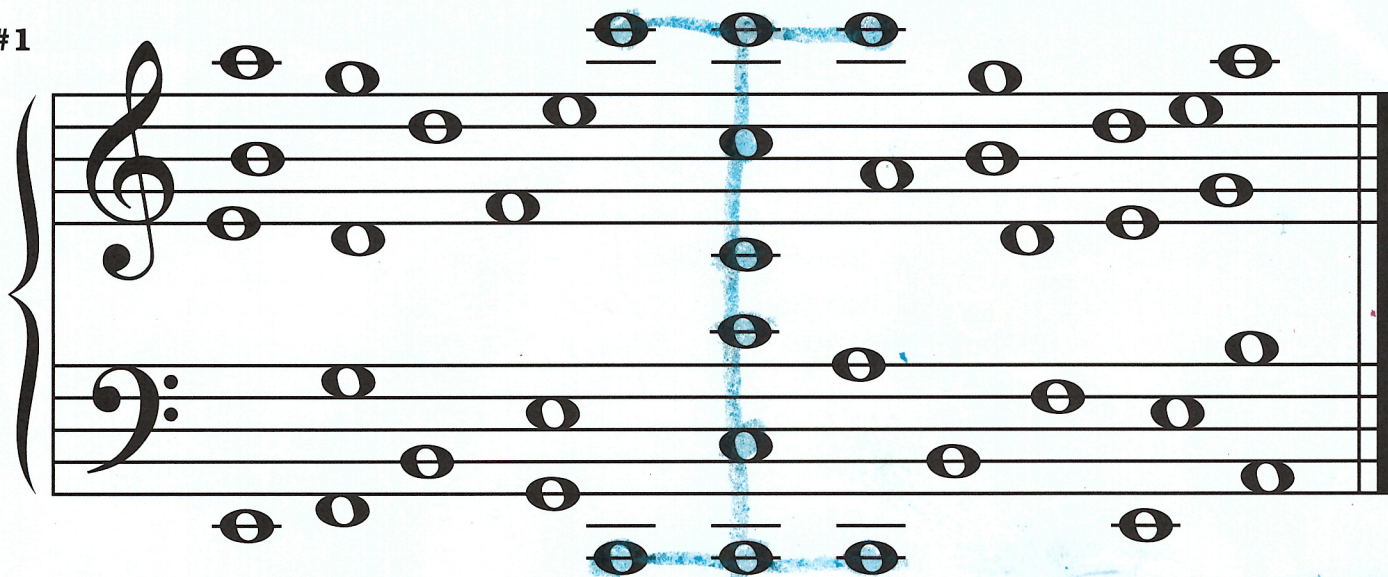


DON'T YOU LOVE IT?

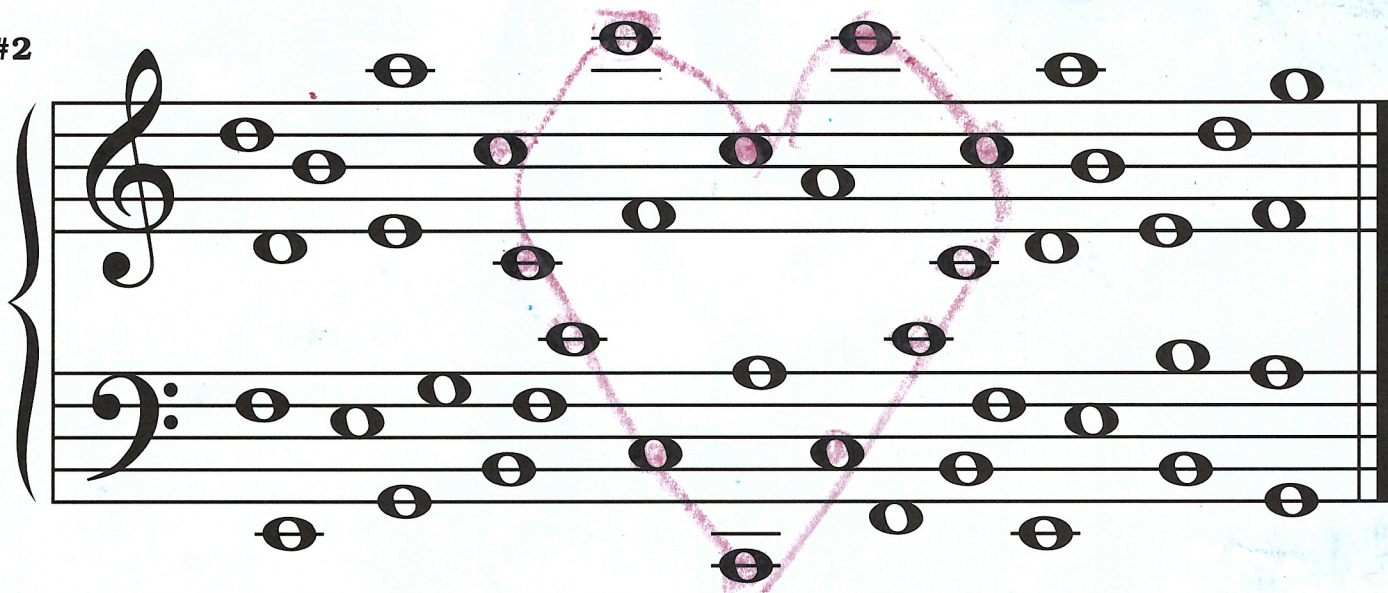


Color *only* the guidepost **C**'s to reveal a secret message. Use blue for the guidepost **C**'s on grand staff #1 and #3. Use red for the guideposts on grand staff #2.

#1



#2



#3

