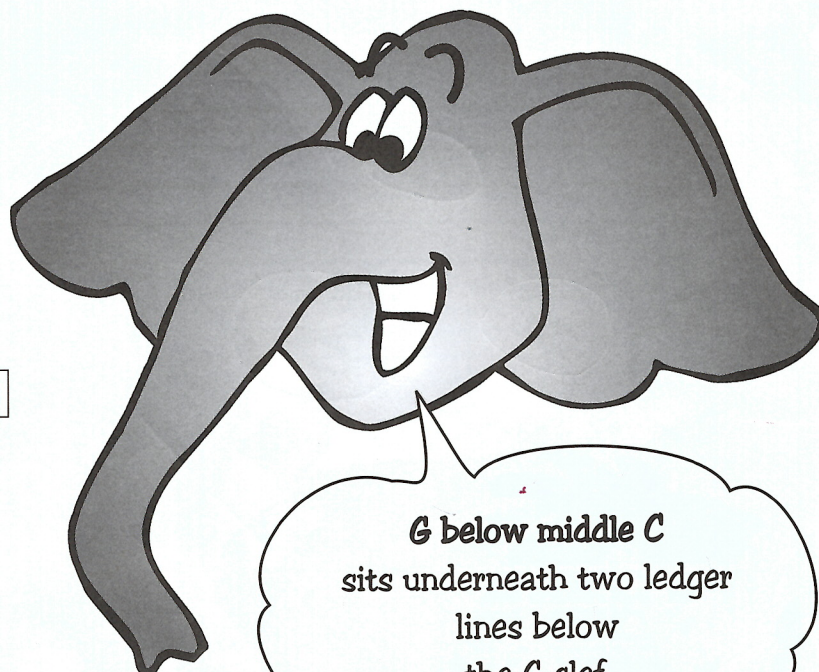
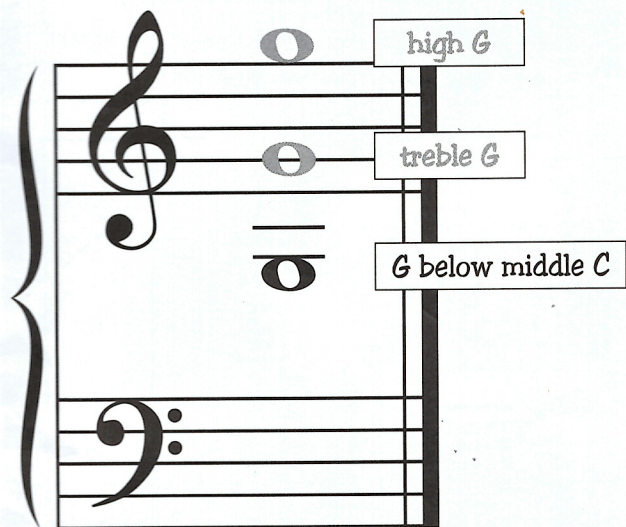
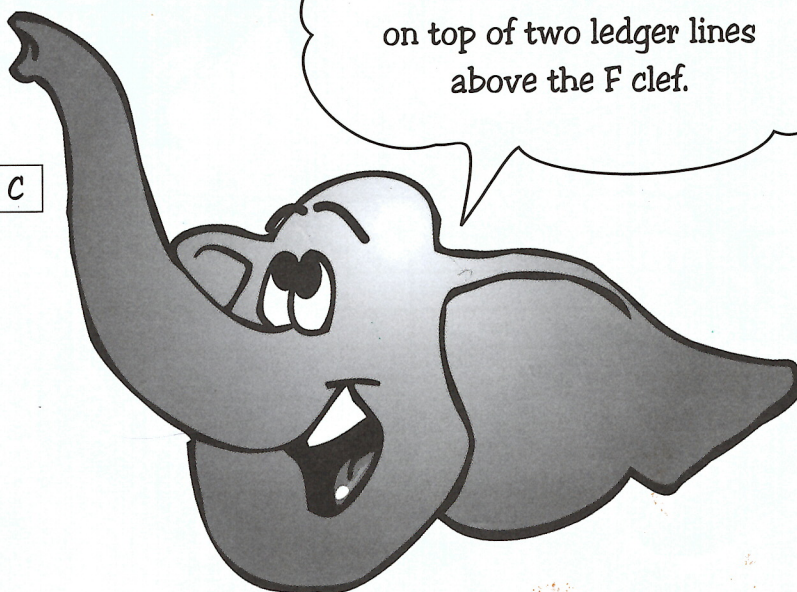
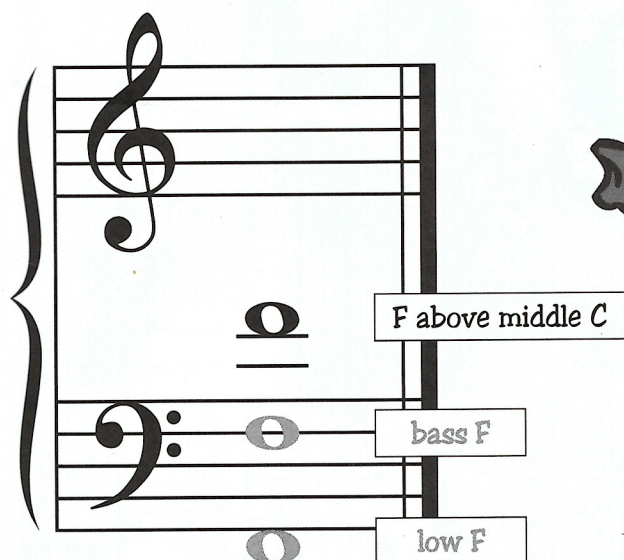


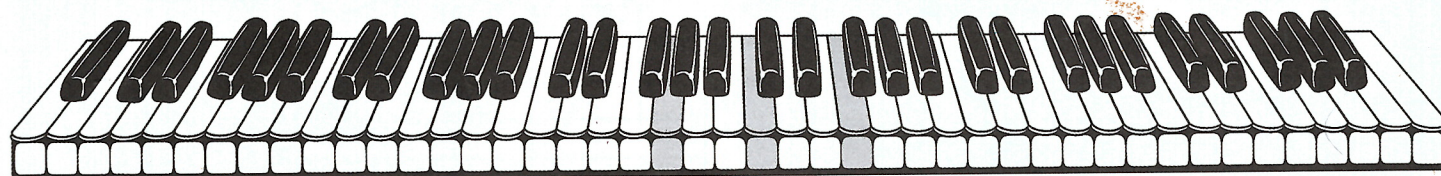
UNIT 9: GUIDEPOSTS - LEDGER LINE G AND LEDGER LINE F



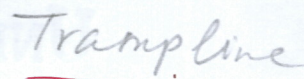
G below middle C
sits underneath two ledger
lines below
the G clef.



F above middle C
sits on top of two ledger
lines
above the F clef.



↑ ↑ ↑
G below middle C middle C F above middle C



-
- A handwritten musical score on a five-line staff, divided into two systems by a brace on the left. The top system uses a treble clef and contains several half notes, some of which are circled in blue ink. The bottom system uses a bass clef and contains several half notes, some of which are marked with a diagonal slash. The notation is in black ink on a white background, with some blue ink markings and a red mark visible.

- note in the box provided.
-
- Handwritten musical notation for a piano exercise. The score is written on a grand staff with a treble and bass clef. The melody is in the treble clef, and the accompaniment is in the bass clef. The notes are: Treble: G4, A4, B4, C5, D5, E5, F5, G5. Bass: F3, E3, D3, C3, B2, A2, G2, F2. The notes are written on a grand staff with a treble and bass clef. The notes are: Treble: G4, A4, B4, C5, D5, E5, F5, G5. Bass: F3, E3, D3, C3, B2, A2, G2, F2.

SOMETHING'S FISHY!

Color these sea creatures according to their note names.

High C blue

Low C yellow

Middle C green

Treble C purple

Bass C pink

Low F orange

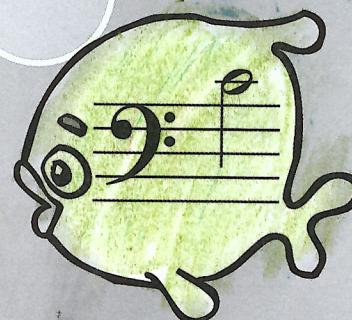
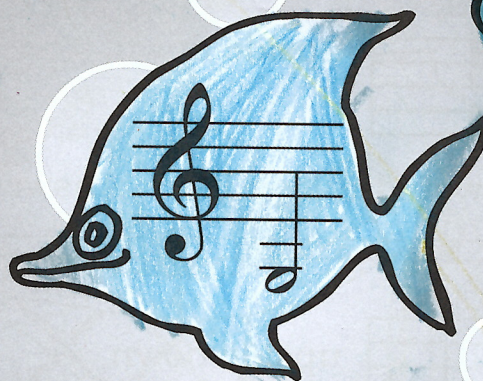
High G red

Treble G brown

Bass F black

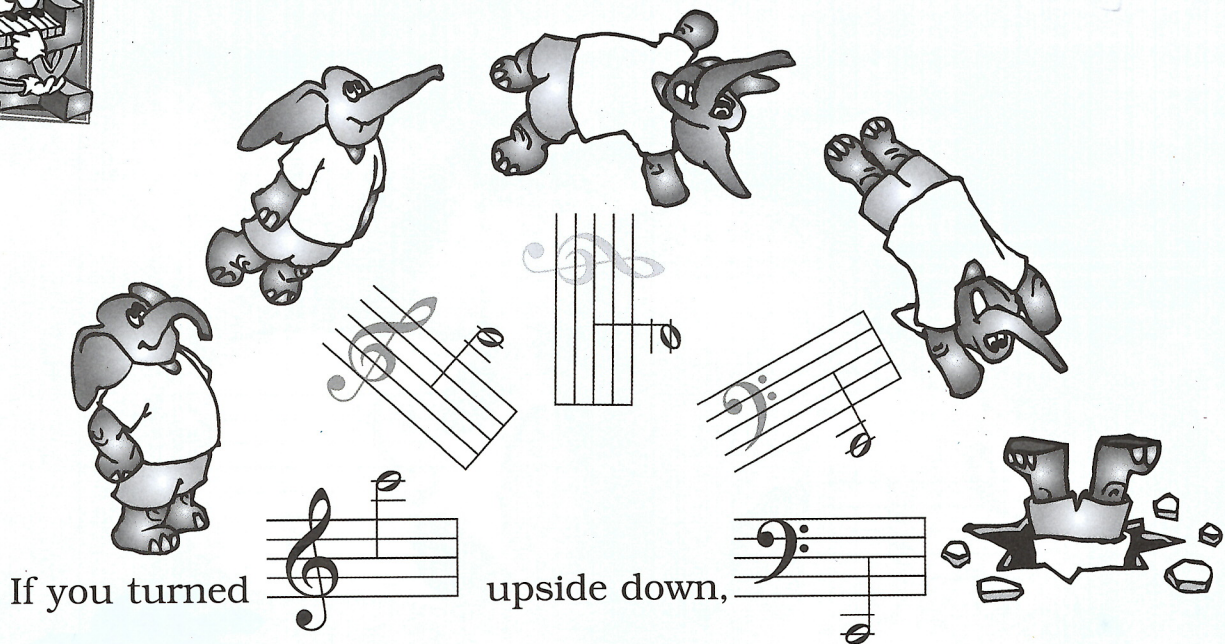
G below middle C light blue



F above middle C light purple

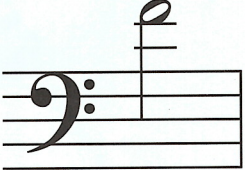









TOTALLY UPSIDE DOWN!





If you turned  upside down,  what bass clef note would it look like? Answer: Low C

1. If you turned  upside down, Draw it: 
what treble staff note would it look like? Answer G below

2. If you turned  upside down, Draw it: 
what treble staff note would it look like? Answer high G

3. If you turned  upside down, Draw it: 
what treble staff note would it look like? Answer treble C

4. If you turned  upside down, Draw it: 
what bass staff note would it look like? Answer bass F