

## Lesson 4

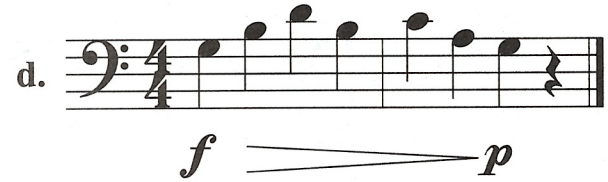
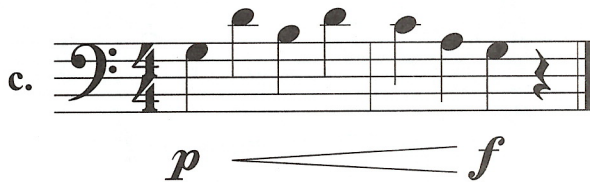
### At the Lesson

#### DYNAMICS

*Piano (p)* means *soft*. *Forte (f)* means *loud*. Listen as your teacher play these melodies with dynamics.



*Crescendo* (  ) means *gradually louder*. *Diminuendo* (  ) means *gradually softer*. Listen as your teacher plays these melodies with dynamics.



1. Your teacher will play melodies with dynamics. Circle the dynamics that you hear.

a. soft to loud

loud to soft

b. soft to loud

loud to soft

c. piano to forte

forte to piano

d. *piano to forte*

forte to piano

#### LISTEN AND COPY

2. Your teacher will play melodies and sing the note names. Copy your teacher's playing and singing.

#### RHYTHM

3. Your teacher will clap (tap) rhythm patterns. Draw a line to connect each example's letter with the pattern that you hear.

a. 

b. 

c. 

d. 

*Note: Handwritten lines connect 'a' to the second pattern (b), 'b' to the first pattern (a), 'c' to the third pattern (c), and 'd' to the fourth pattern (d).*