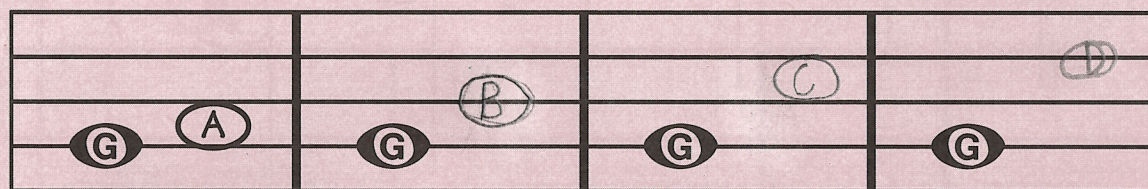


# UNIT NINE



In each measure, draw the second note and write its letter name.  
The first one is done to show you how.

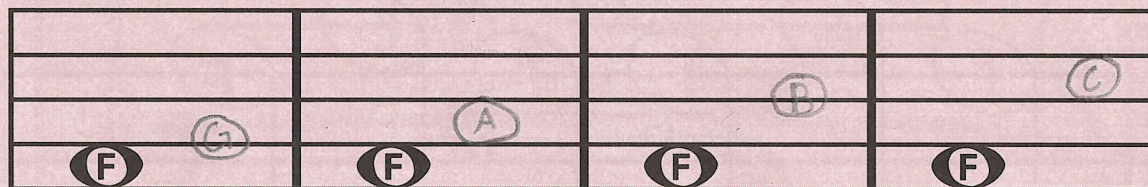


Up a second

Up a third

Up a fourth

Up a fifth



Up a second

Up a third

Up a fourth

Up a fifth

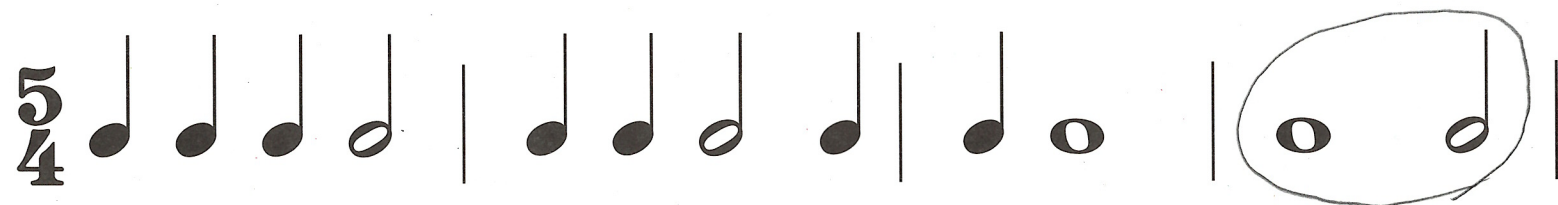
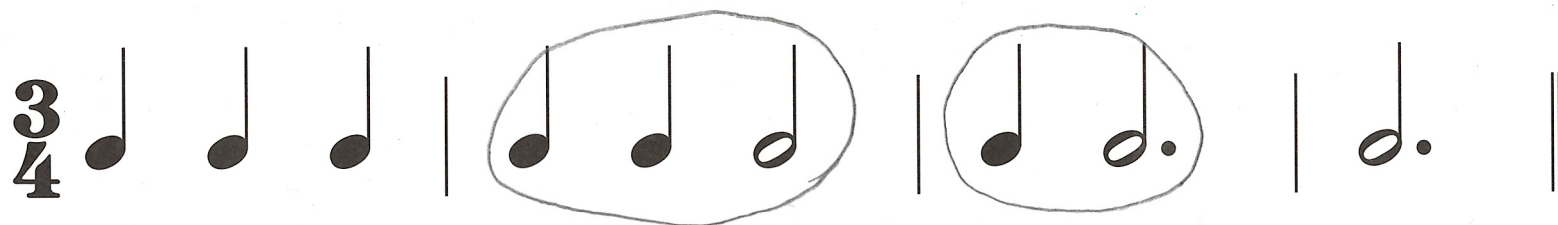
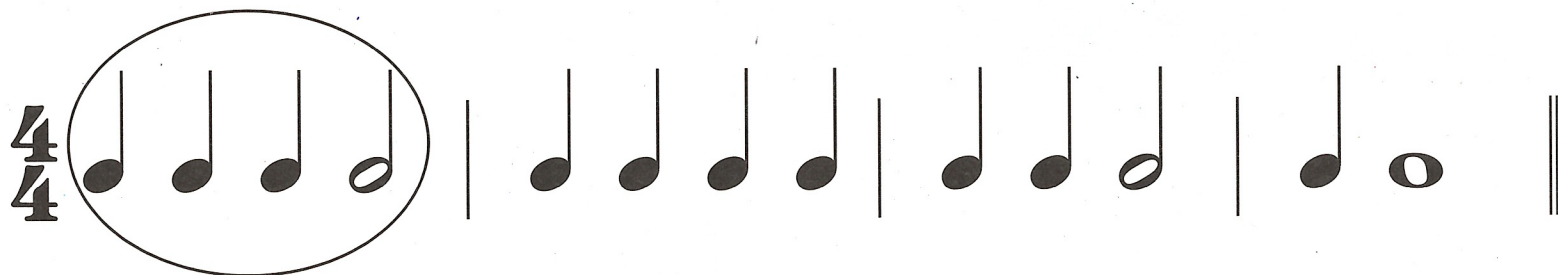






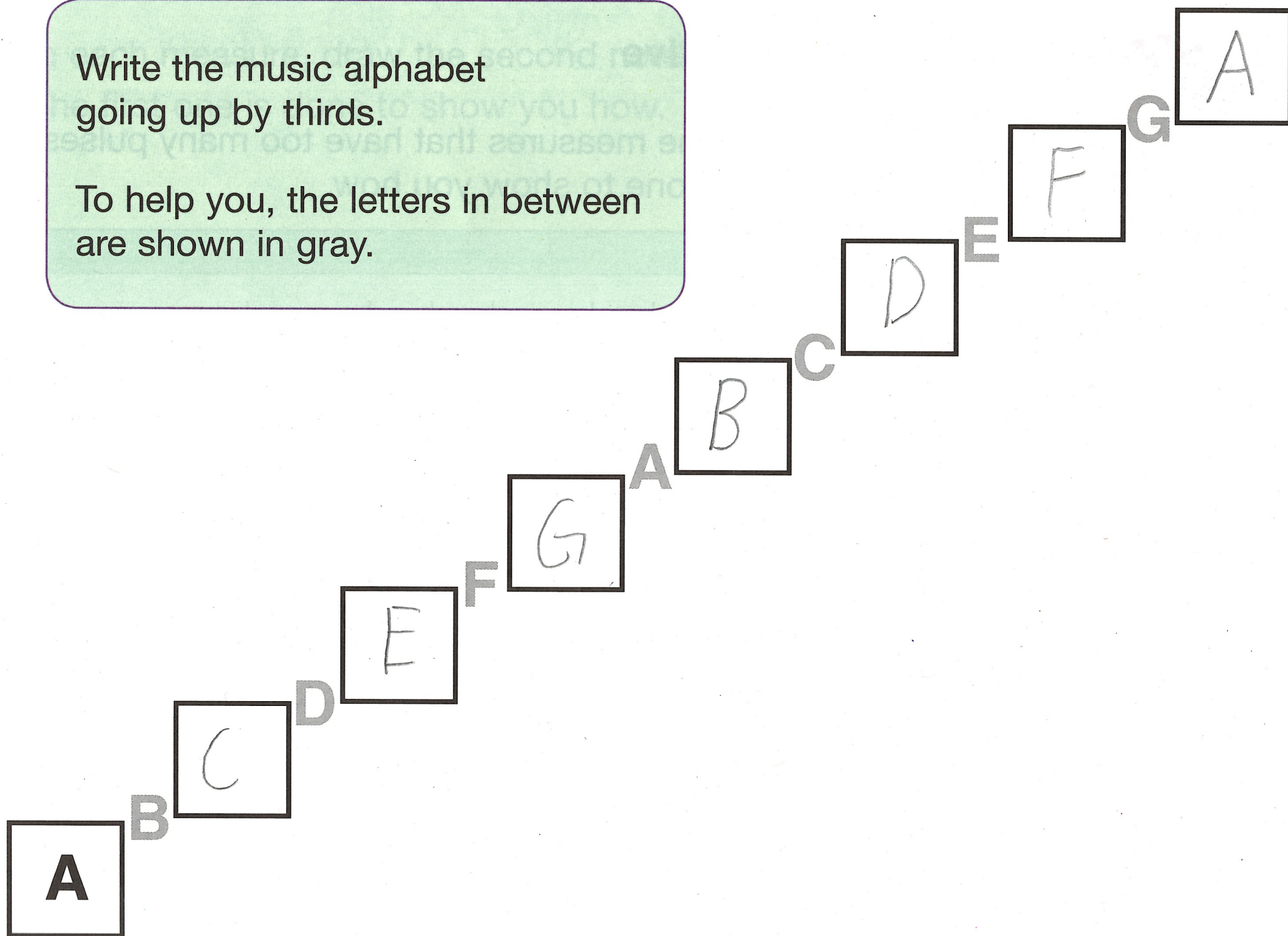
## Rhythm Detective

Find and circle the measures that have too many pulses.  
The first one is done to show you how.



Write the music alphabet  
going up by thirds.

To help you, the letters in between  
are shown in gray.





**G**

**F**

E

**D**

C

**B**

A

**G**

F

**E**

D

**C**

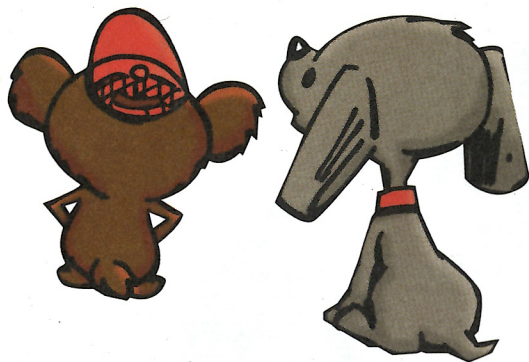
B

**A**

G

Write the music alphabet  
going down by thirds.

To help you, the letters in between  
are shown in gray.





Under each note, write its letter name.  
The first one is done to show you how.



A musical staff in 4/4 time, featuring a treble and bass clef. The staff contains ten notes, each with a letter name written below it. The notes are: C (treble), D (treble), E (treble), F (treble), G (treble), F (treble), E (treble), D (treble), C (treble), and F (bass). The letter names are written in a simple, handwritten style.

Measure	1	2	3	4	5	6	7	8	9
Notes	C	D	E	F	G	F	E	D	C
Letter Names	C	D	E	F	G	F	E	D	C



## A Musical Rainbow

Color the Bass F red.

Color the bass clef violet.

Color the whole note green.

Color the Middle C yellow.

Color the Treble G orange.

Color the treble clef blue.

