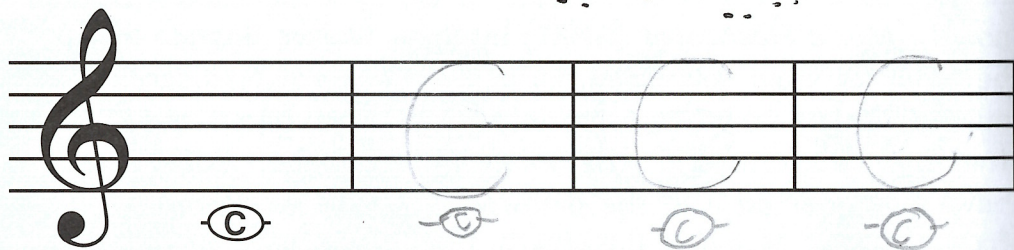
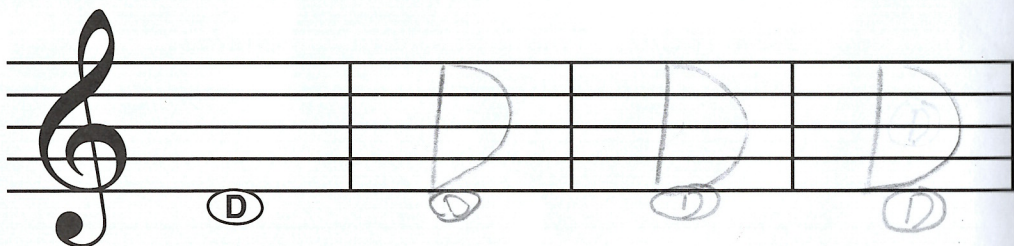


A. Draw three C's.



B. Draw three D's.



NEW NOTES!

Bastien Music Flashcards GP27: Practice naming and playing these cards until you can recognize them easily.



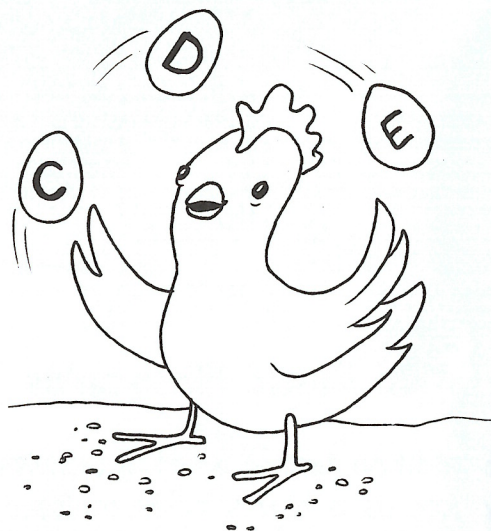
25



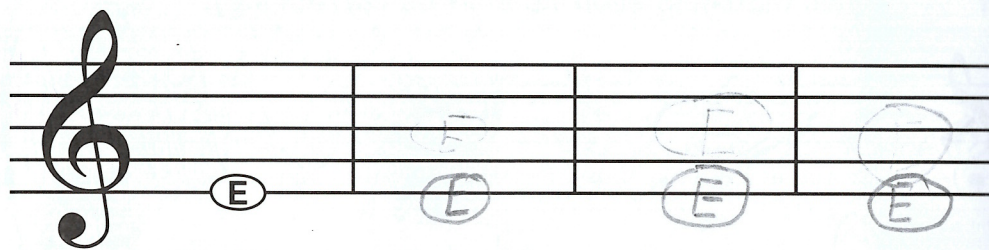
26



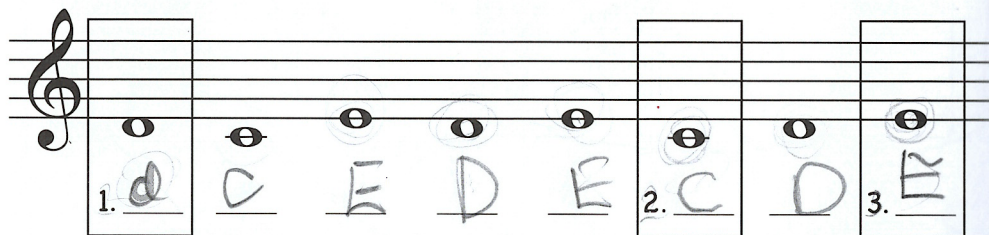
27



A. Draw three E's.



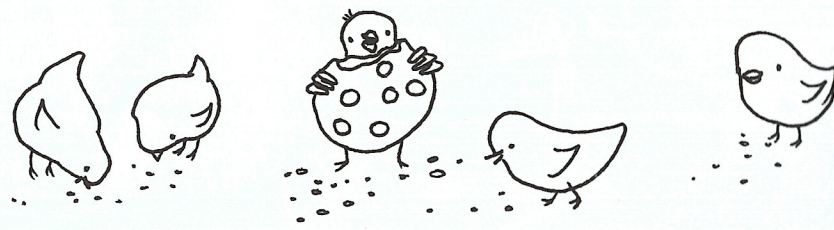
B. Name each note.



C. Fill in the blanks with note names from above to complete the riddle.

Q: Why d i d the C ooki E go to the d octor

A: Be C ause it was feeling C rummy!



1. Name each note.

2. Draw lines matching each note to its correct key.

Three musical staves are shown, each with a single note. Below them are three piano keyboard diagrams. Lines connect the notes to the correct keys on the keyboards.

- Staff 1: Note D (labeled 1. D)
- Staff 2: Note C (labeled 2. C)
- Staff 3: Note E (labeled 3. E)

The keyboard diagrams show the following keys highlighted:

- Keyboard 1: D (white), C (black), E (white)
- Keyboard 2: C (white), B (black), A (white)
- Keyboard 3: E (white), D (black), C (white)

3. Fill in the blanks with note names from above to form a fun fact.

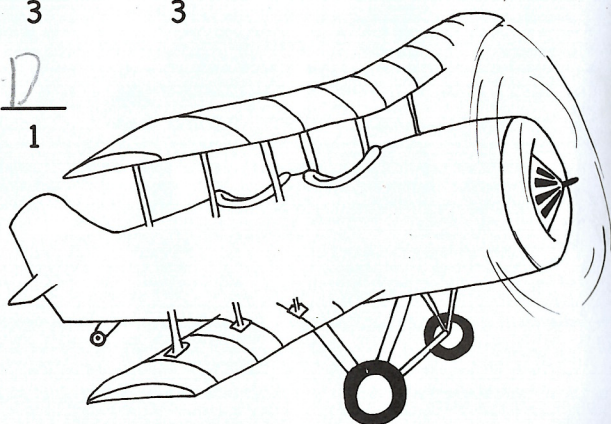
In 1903 the Wright brothers flew

the first power

airplane at

Kitty Hawk beach

in North Carolina.



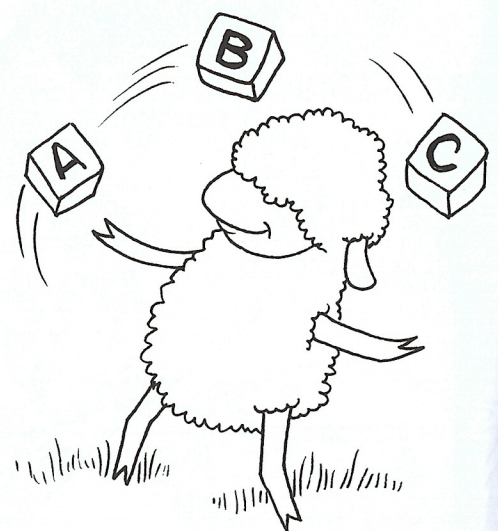
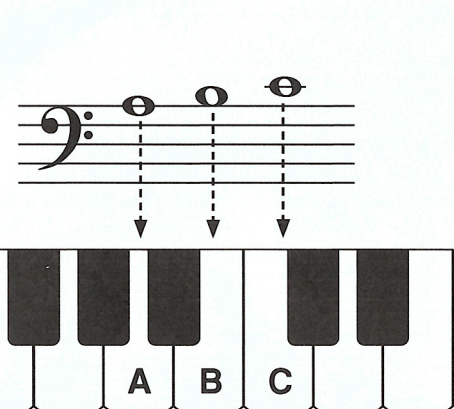
Matching

A matching exercise featuring six musical staves (each with a single note) and six piggy banks (each with a piano keyboard diagram). Lines connect the notes to the correct keyboard diagrams.

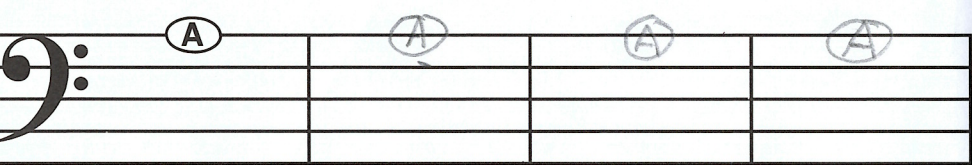
- Staff 1: Note D
- Staff 2: Note C
- Staff 3: Note E
- Staff 4: Note D
- Staff 5: Note C
- Staff 6: Note E

The piggy banks show the following keyboard diagrams:

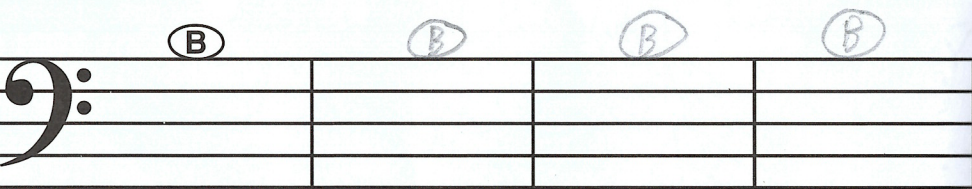
- Piggy Bank 1: D (white), C (black), E (white)
- Piggy Bank 2: C (white), B (black), A (white)
- Piggy Bank 3: E (white), D (black), C (white)
- Piggy Bank 4: D (white), C (black), E (white)
- Piggy Bank 5: C (white), B (black), A (white)
- Piggy Bank 6: E (white), D (black), C (white)



Draw three A's.



Draw three B's.

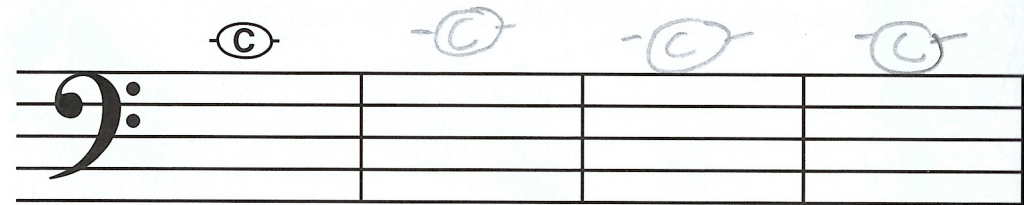


NEW NOTES!

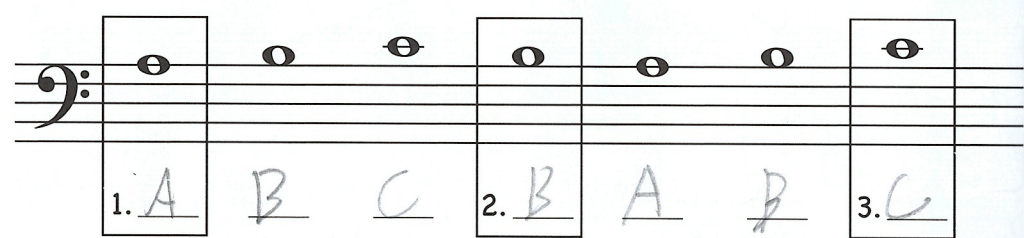
astien Music Flashcards GP27: Practice naming and saying these cards until you can recognize them easily.



A. Draw three C's.



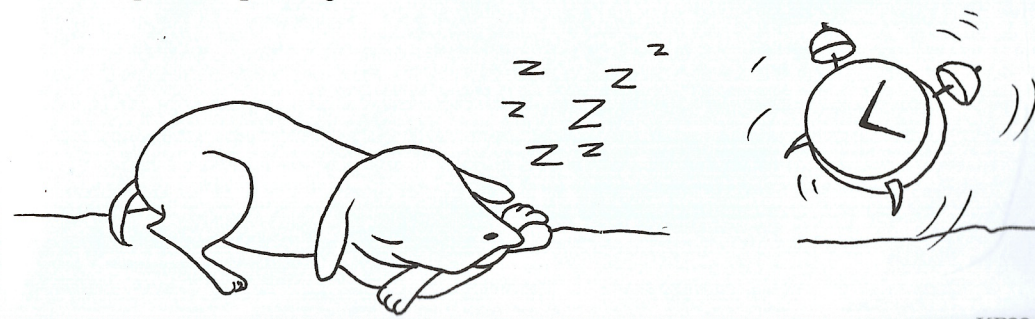
B. Name each note.



C. Fill in the blanks with note names from above to complete the riddle.

Q: What animal keeps the best time?

A: a watchdog.



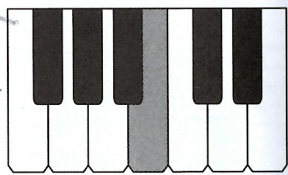
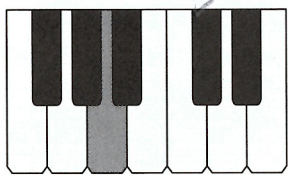
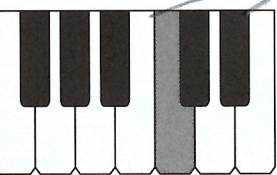
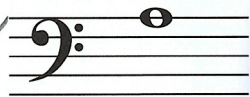
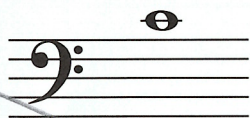
A. Name each note.

B. Draw lines matching each note to its correct key.

1. B

2. C

3. A

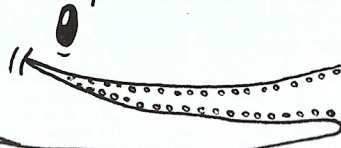


C. Fill in the blanks with note names from above to form a fun fact.

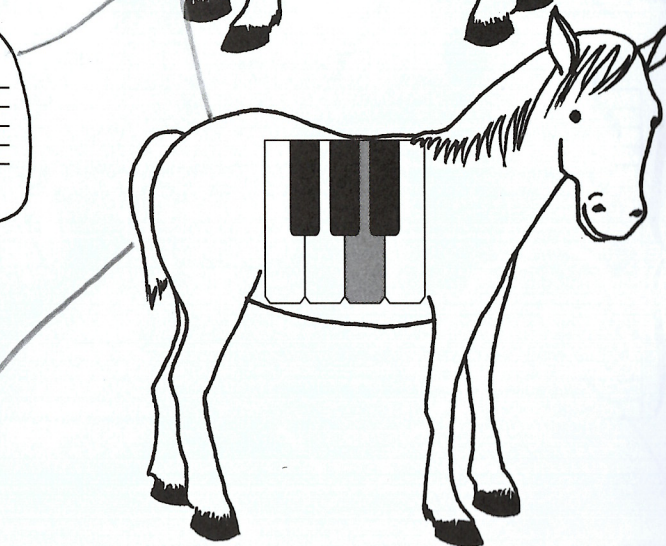
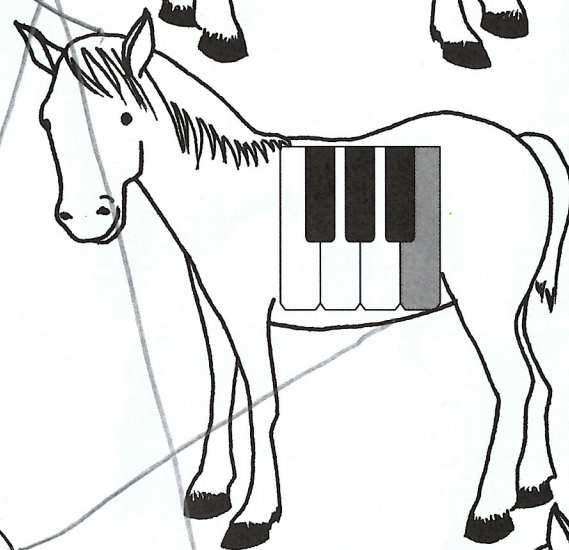
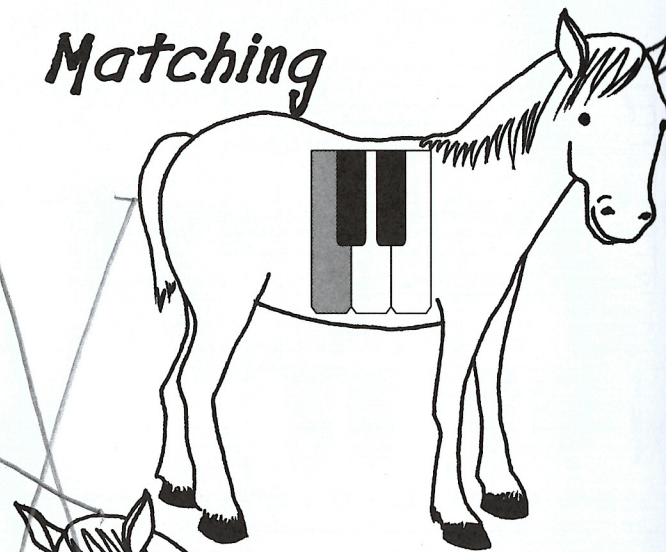
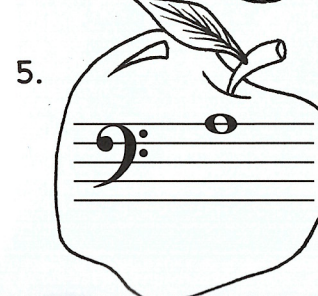
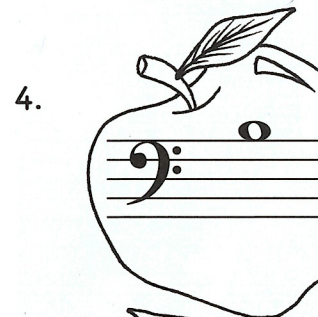
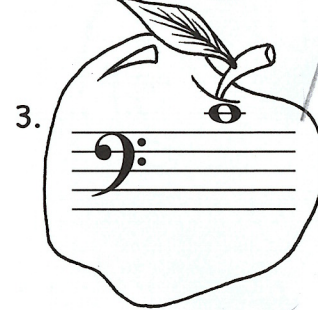
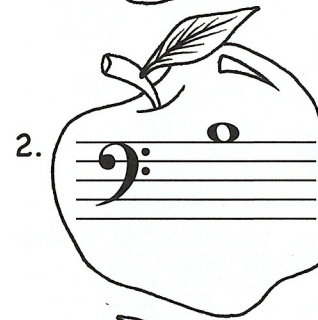
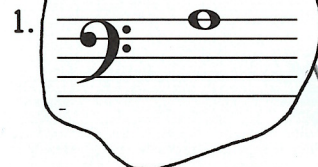
The B lue whale is the l A rgest animal on earth.

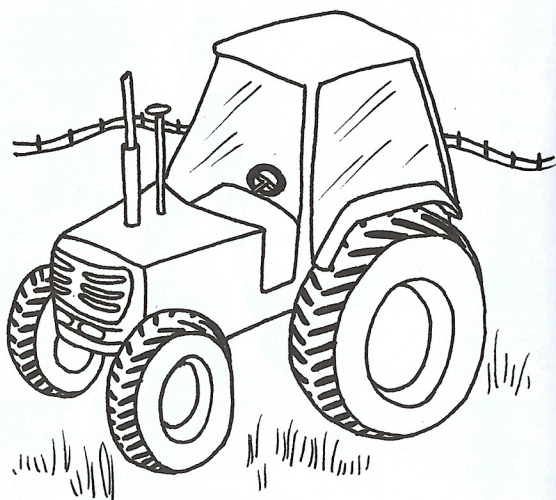
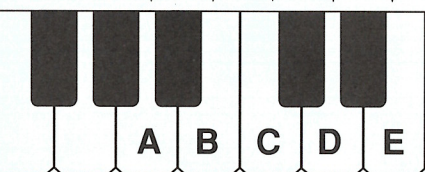
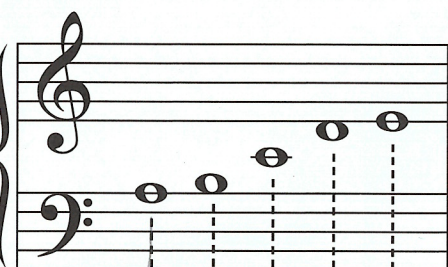
Its he C d is as B ig as a C ar

and its tongue is as long as an elephant.

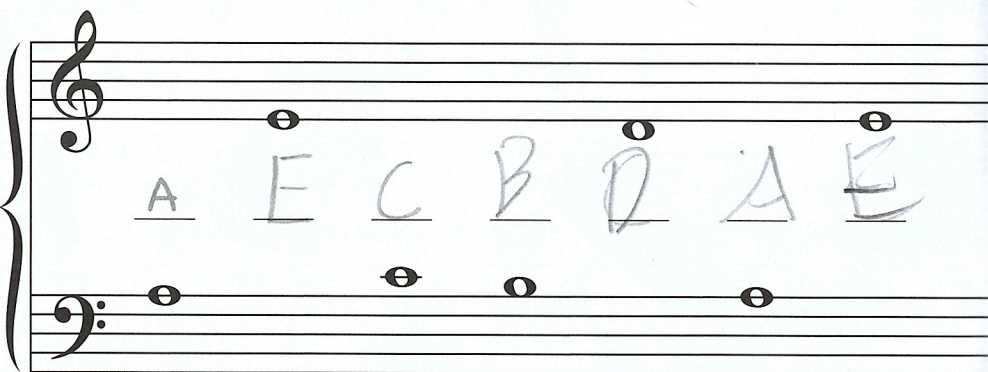


Matching





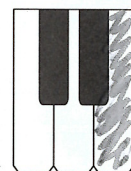
Name each note.



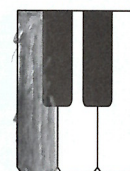
A. Name each note.

B. Color the keys to match the notes.

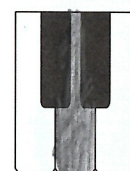
1. E



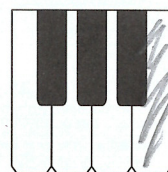
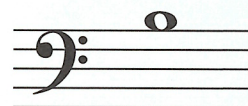
2. C



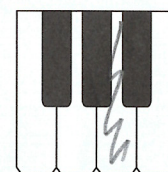
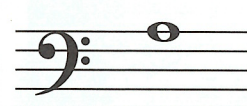
3. D



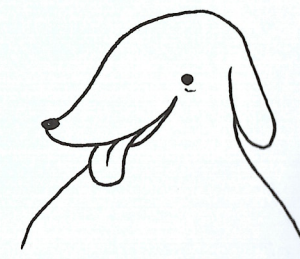
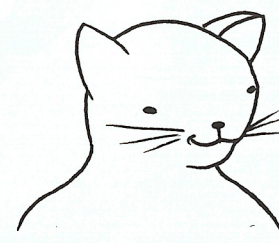
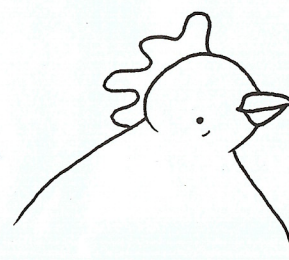
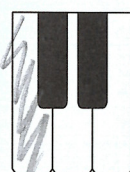
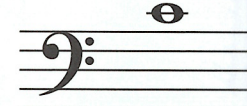
4. B



5. A



6. C



name the notes to form words.

