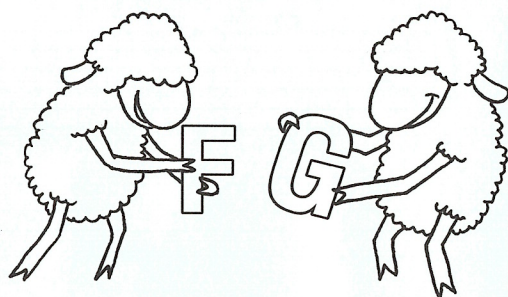
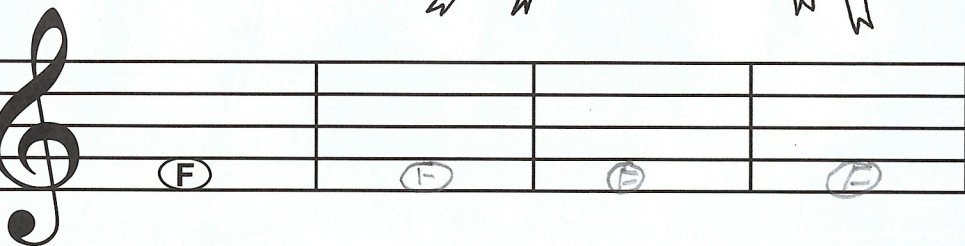


The G clef (treble clef) wraps around the G line (2nd line).

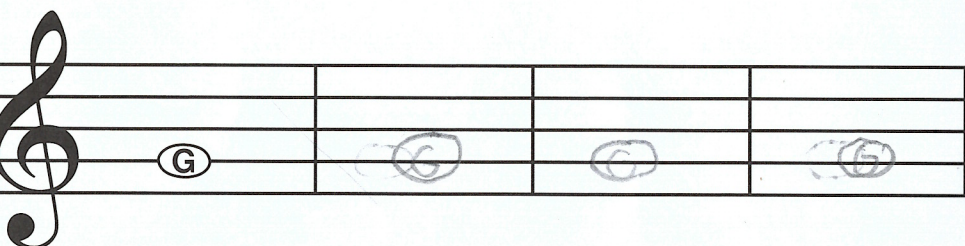


iddle C

Draw three F's.

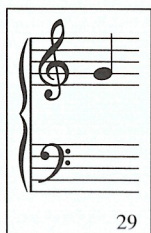


Draw three G's.

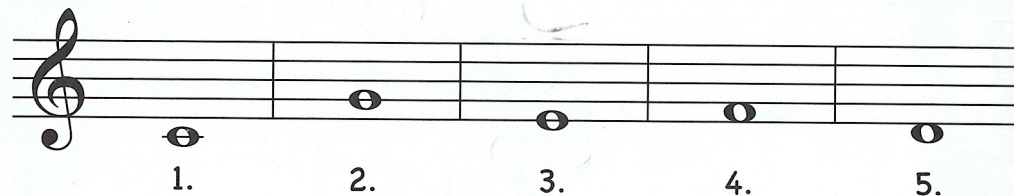


NEW NOTES!

Bastien Music Flashcards GP27: Practice naming and playing these cards until you can recognize them easily.



A. Write the numbered notes on the staff in the correct place on the keyboard.



Middle C

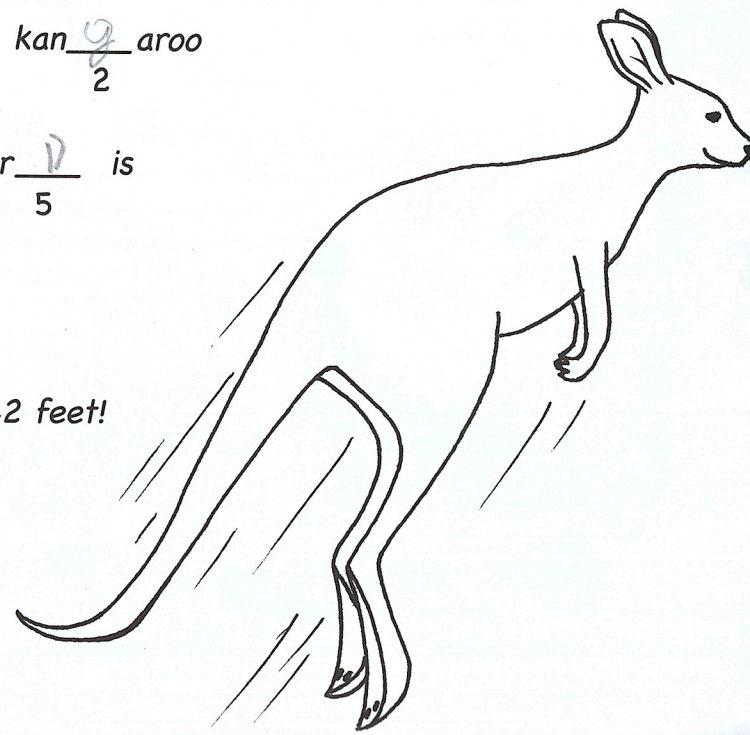
B. Fill in the blanks with note names from above to form a fun fact.

The high e ₃ st kan g ₂ aroo

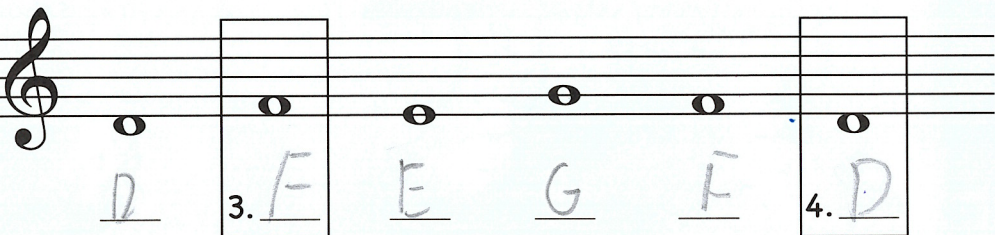
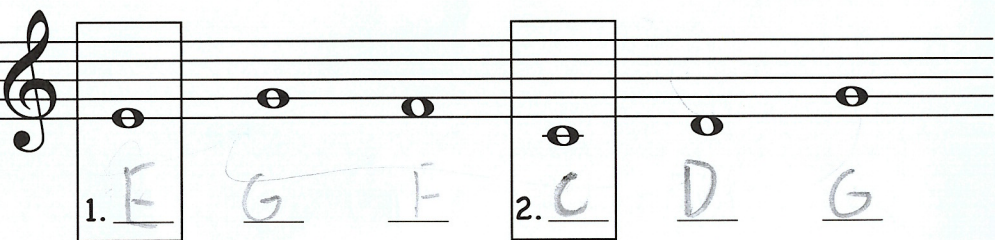
leap on re e ₁ or d ₅ is

10 f ₄ eet.

The longest is 42 feet!



A. Name each note.



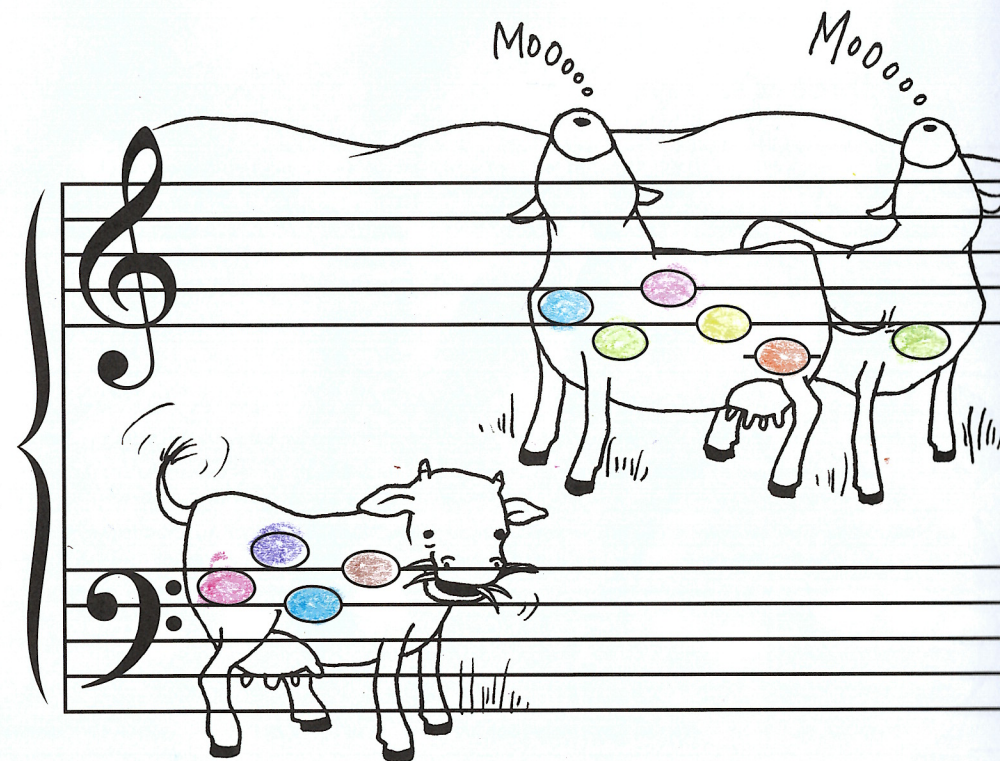
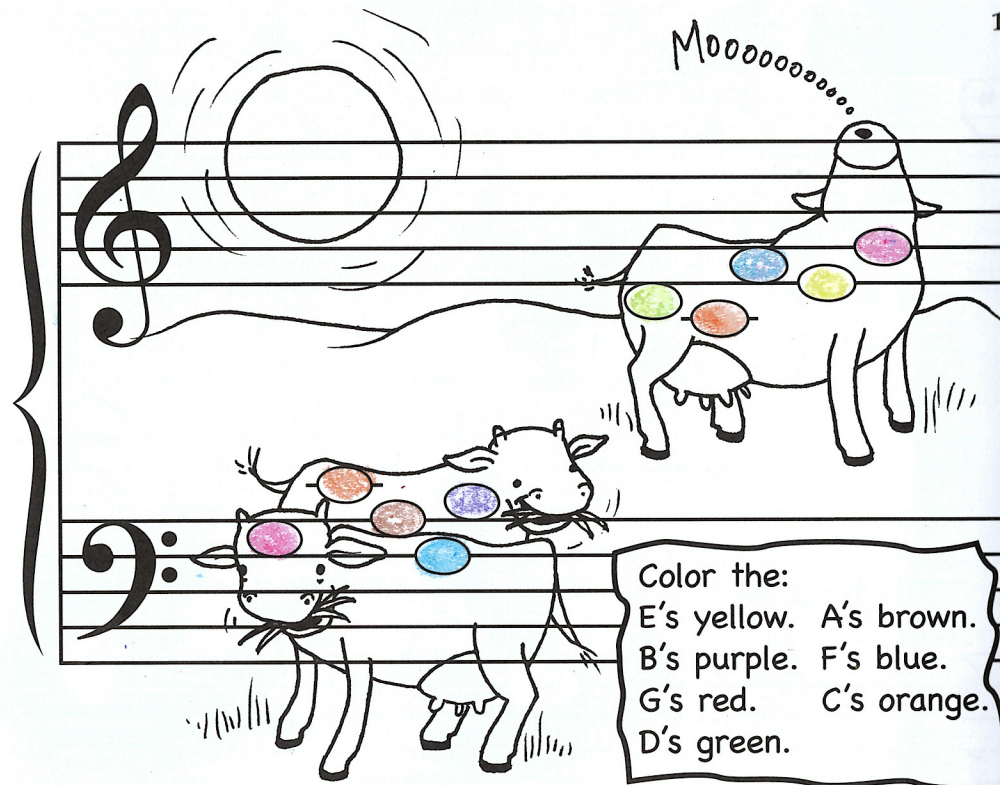
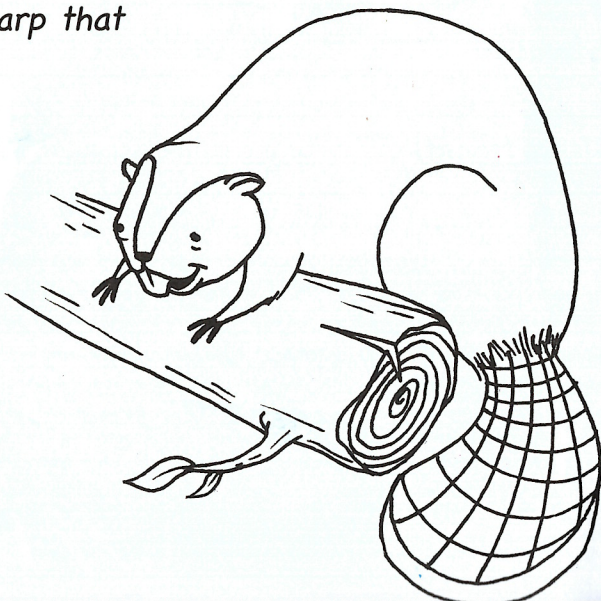
B. Fill in the blanks with note names from above to form a fun fact.

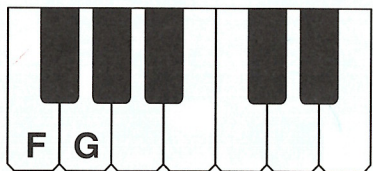
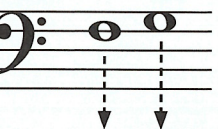
3. e ver teeth are so sharp that

Native Americans on c e

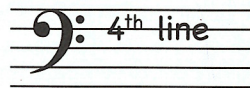
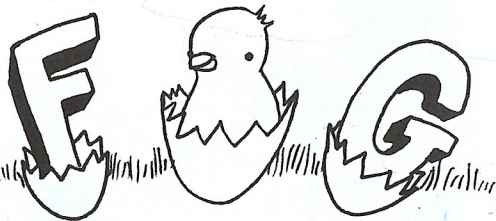
used them

as kni f e bla d es.



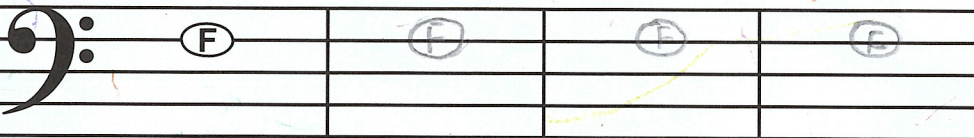


Middle C

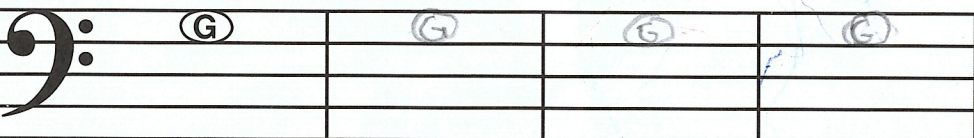


The two dots of the F clef (bass clef) surround the F line (4th line).

Draw three F's.



Draw three G's.



NEW NOTES!

Bastien Music Flashcards GP27: Practice naming and playing these cards until you can recognize them easily.



14



15

A. Write the numbered notes on the staff in the correct place on the keyboard.



1.

2.

3.

4.

5.

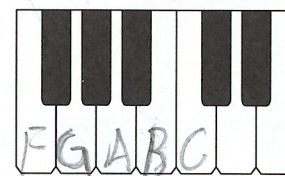
C

G

B

F

A



Middle C

B. Color the: A's red. F's orange.
G's yellow. B's purple.
C's green.



Name each note.

Handwritten musical notation on a bass clef staff. Notes are: G, F, G, B, 1. A, B, 2. C.

Handwritten musical notation on a bass clef staff. Notes are: A, G, 3. B, 4. F, C, A, 5. G.

Fill in the blanks with note names from above to form a fun fact.

A ra c hi b utyrophobia" (pronounced

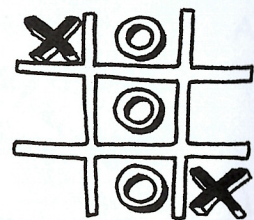
h-rak-i-byu-teer-a-foe-be-uh) is

the f ear of peanut butter g etting

truck to the roof of your mouth!



Tic, Tac, Toe



A. Name each note.

B. Use the key to see who wins.

1. ♭ B = X

2. ♯ E = O

3. ♭ A = X

4. ♯ G = O

5. Middle C = X

6. ♭ F = O

7. ♭ G = X

8. ♯ D = O

9. ♯ F = X

Handwritten musical notation on a bass clef staff. Note is: G. (Crossed out with a large X)

Handwritten musical notation on a bass clef staff. Note is: F. (Circled)

Handwritten musical notation on a treble clef staff. Note is: E. (Circled)

Handwritten musical notation on a treble clef staff. Note is: G. (Circled)

Handwritten musical notation on a bass clef staff. Note is: B. (Crossed out with a large X)

Handwritten musical notation on a bass clef staff. Note is: A. (Crossed out with a large X)

Handwritten musical notation on a treble clef staff. Note is: D. (Circled)

Handwritten musical notation on a bass clef staff. Note is: C. (Crossed out with a large X)

Handwritten musical notation on a treble clef staff. Note is: F. (Crossed out with a large X)